

Product datasheet

Anti-SARS-COV-2 nsp3 antibody [EPR24842-84] ab283958

Recombinant RabMAb

★★★★★ **3 Abreviews** [3 Images](#)

Overview

Product name	Anti-SARS-COV-2 nsp3 antibody [EPR24842-84]
Description	Rabbit monoclonal [EPR24842-84] to SARS-COV-2 nsp3
Host species	Rabbit
Tested applications	Suitable for: WB, ELISA
Species reactivity	Reacts with: SARS-CoV-2
Immunogen	Recombinant fragment. This information is proprietary to Abcam and/or its suppliers.
Positive control	Elisa: Recombinant SARS-COV-2 NSP3 protein (His-tag) WB: recombinant SARS-COV-2 NSP3 protein (His-tag)
General notes	<p>This product is a recombinant monoclonal antibody, which offers several advantages including:</p> <ul style="list-style-type: none"> - High batch-to-batch consistency and reproducibility - Improved sensitivity and specificity - Long-term security of supply - Animal-free production <p>For more information see here.</p> <p>Our RabMAb[®] technology is a patented hybridoma-based technology for making rabbit monoclonal antibodies. For details on our patents, please refer to RabMAb[®] patents.</p>

Properties

Form	Liquid
Storage instructions	Shipped at 4°C. Store at +4°C short term (1-2 weeks). Upon delivery aliquot. Store at -20°C long term. Avoid freeze / thaw cycle.
Storage buffer	<p>pH: 7.2</p> <p>Preservative: 0.01% Sodium azide</p> <p>Constituents: 59% PBS, 40% Glycerol (glycerin, glycerine), 0.05% BSA</p>
Purity	Protein A purified
Clonality	Monoclonal
Clone number	EPR24842-84

Applications

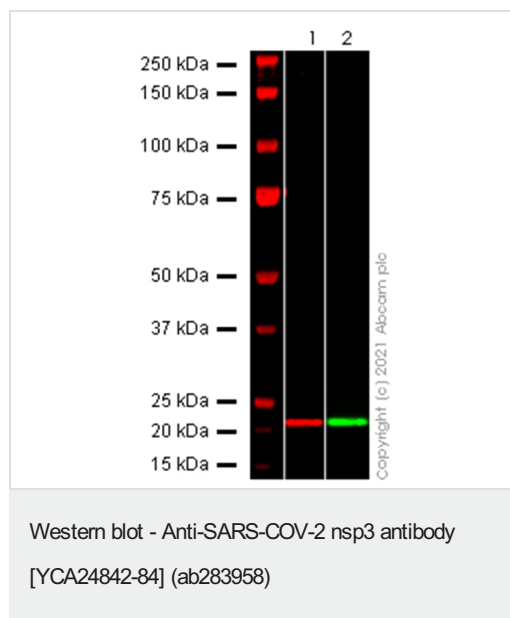
The Abpromise guarantee

Our **Abpromise guarantee** covers the use of ab283958 in the following tested applications.

The application notes include recommended starting dilutions; optimal dilutions/concentrations should be determined by the end user.

Application	Abreviews	Notes
WB	★★★★★ (1)	1/1000. Detects a band of approximately 21 kDa.
ELISA		Use a concentration of 2e-005 - 1 µg/ml.

Images



All lanes: Anti-SARS-CoV2 NSP3 antibody (ab283958) at 1/1000 dilution

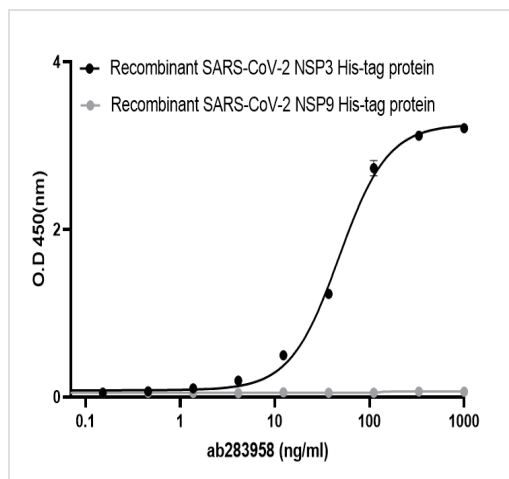
Lanes 1-2: Recombinant SARS-CoV2 NSP3 protein (His tagged) at 0.4 µg

Lanes 1: Red – loading control **ab18184** (Mouse monoclonal [HIS.H8] to 6X His tag®) observed at 21 kDa.

Lanes 2: Green – ab283958 observed at 21 kDa

ab283958 was shown to bind specifically to SARS-CoV-2 NSP3 protein in Western blot. Samples were run on an SDS-PAGE gel then transferred onto a nitrocellulose membrane. Membranes were blocked in 3 % milk in TBS-0.1 % Tween® 20 (TBS-T) before incubation with primary antibodies overnight at 4 °C. Blots were washed four times in TBS-T, incubated with secondary antibodies for 1 h at room temperature, washed again four times then imaged. Secondary antibodies used were Goat anti-Rabbit IgG H&L (IRDye® 800CW) preabsorbed (**ab216773**) and Goat anti-Mouse IgG H&L (IRDye® 680RD) preabsorbed (**ab216776**) at 1/20000 dilution.

Blocking buffer: 3% milk in TBS-0.1% Tween® 20 (TBS-T)



ELISA - Anti-SARS-COV-2 nsp3 antibody
[YCA24842-84] (ab283958)

Indirect ELISA showing primary antibody ab283958 binding to recombinant SARS-COV-2 NSP3 protein (His-tag). Plates were coated with recombinant SARS-COV-2 NSP3 protein (His-tag) and recombinant SARS-COV-2 NSP9 protein (His-tag) at 1000 ng/ml. Binding of ab283958 was assessed in a serial dilution range 0.016- 1000 ng/mL (a 3-fold serial dilution).

Binding was detected using pre-adsorbed secondary antibody, goat anti-rabbit IgG H&L (HRP, [ab97080](#)) at 1/2000 dilution.

Why choose a recombinant antibody?

 <p>Research with confidence Consistent and reproducible results</p>	 <p>Long-term and scalable supply Recombinant technology</p>
 <p>Success from the first experiment Confirmed specificity</p>	 <p>Ethical standards compliant Animal-free production</p>

Anti-SARS-COV-2 nsp3 antibody [EPR24842-84]
(ab283958)

Please note: All products are "FOR RESEARCH USE ONLY. NOT FOR USE IN DIAGNOSTIC PROCEDURES"

Our Promise to you: Quality guaranteed and expert technical support

- Replacement or refund for products not performing as stated on the datasheet
- Valid for 12 months from date of delivery

- Response to your inquiry within 24 hours
- We provide support in Chinese, English, French, German, Japanese and Spanish
- Extensive multi-media technical resources to help you
- We investigate all quality concerns to ensure our products perform to the highest standards

If the product does not perform as described on this datasheet, we will offer a refund or replacement. For full details of the Abpromise, please visit <https://www.abcam.com/abpromise> or contact our technical team.

Terms and conditions

- Guarantee only valid for products bought direct from Abcam or one of our authorized distributors