

Product datasheet

Anti-SARS-CoV-2 Spike Glycoprotein S1 antibody [HL13402] - BSA and Azide free ab281309

Recombinant

[7 Images](#)

Overview

Product name	Anti-SARS-CoV-2 Spike Glycoprotein S1 antibody [HL13402] - BSA and Azide free
Description	Rabbit monoclonal [HL13402] to SARS-CoV-2 Spike Glycoprotein S1 - BSA and Azide free
Host species	Rabbit
Tested applications	Suitable for: WB, Indirect ELISA, Sandwich ELISA, ICC/IF
Species reactivity	Reacts with: SARS-CoV-2
Immunogen	Synthetic peptide within Human coronavirus SARS-CoV-2 Spike Glycoprotein S1. The exact immunogen sequence used to generate this antibody is proprietary information. If additional detail on the immunogen is needed to determine the suitability of the antibody for your needs, please contact our Scientific Support team to discuss your requirements. Strain Wuhan-Hu-1
Positive control	WB: SARS-CoV-2 Spike transfected Vero E6 whole cell extract, SARS-CoV-2 Spike transfected 293T cells. ICC/IF: SARS-CoV-2 Spike transfected 293T cells. Indirect ELISA: Recombinant full-length SARS-CoV-2 spike protein.

Properties

Form	Liquid
Storage instructions	Shipped at 4°C. Store at +4°C.
Storage buffer	pH: 7.4 Constituent: 100% PBS
Carrier free	Yes
Purity	Protein A purified
Clonality	Monoclonal
Clone number	HL13402
Isotype	IgG

Applications

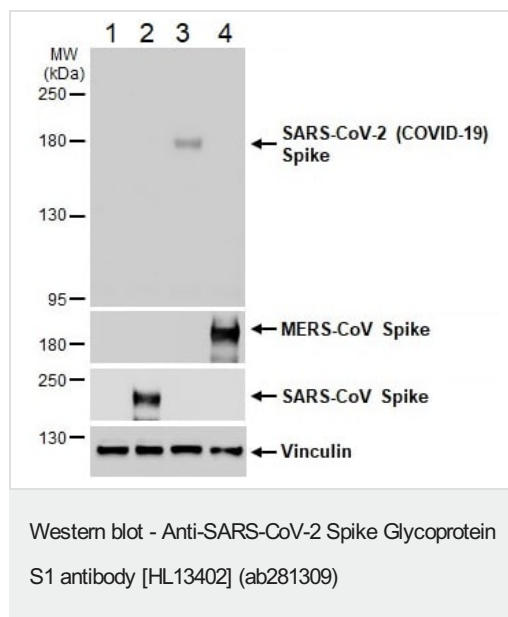
The Abpromise guarantee

Our **Abpromise guarantee** covers the use of ab281309 in the following tested applications.

The application notes include recommended starting dilutions; optimal dilutions/concentrations should be determined by the end user.

Application	Abreviews	Notes
WB		1/1000 - 1/10000.
Indirect ELISA		Use a concentration of 1 µg/ml.
Sandwich ELISA		Use a concentration of 1 µg/ml.
ICC/IF		1/1000.

Images



All lanes : Anti-SARS-CoV-2 Spike Glycoprotein S1 antibody [HL13402] - BSA and Azide free (ab281309) at 1/5000 dilution

Lane 1 : Non-transfected HEK-293T (Human epithelial cell line from embryonic kidney transformed with large T antigen) whole cell extract

Lane 2 : SARS-CoV Spike transfected HEK293T whole cell extract

Lane 3 : SARS-CoV-2 (COVID-19) Spike transfected HEK293T whole cell extract

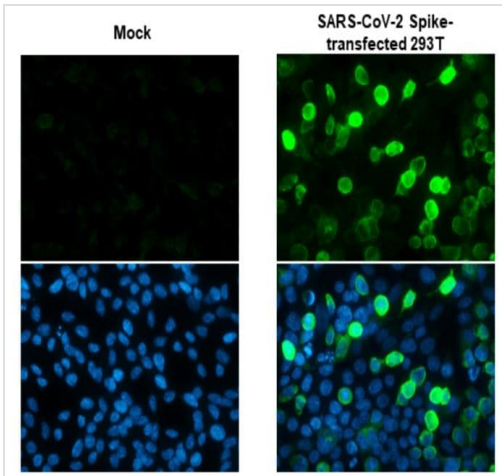
Lane 4 : MERS-CoV Spike transfected HEK293T whole cell extract

Lysates/proteins at 30 µg per lane.

Secondary

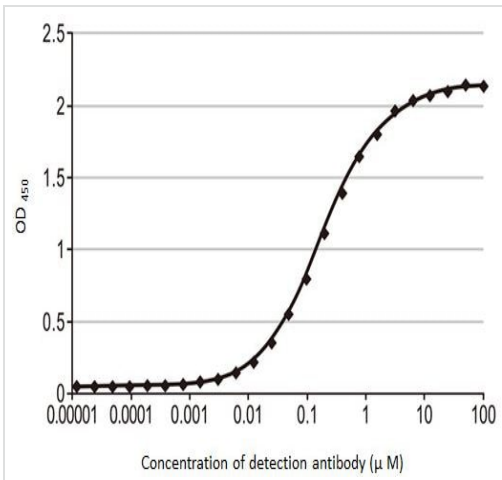
All lanes : HRP-conjugated anti-rabbit IgG antibody

5% SDS-PAGE



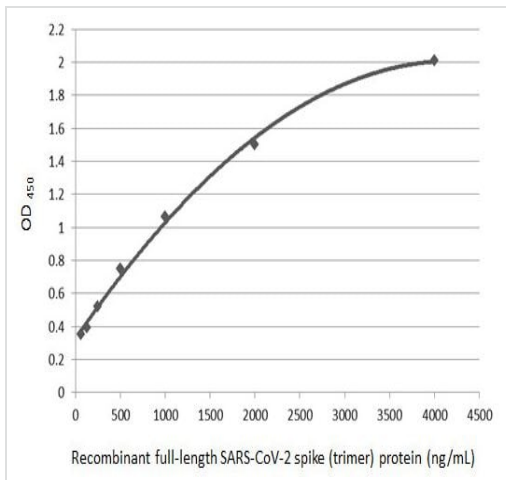
Immunocytochemistry/ Immunofluorescence - Anti-SARS-CoV-2 Spike Glycoprotein S1 antibody [HL13402] - BSA and Azide free (ab281309)

Mock and SARS-CoV-2 (COVID-19) Spike transfected 293T (Human epithelial cell line from embryonic kidney transformed with large T antigen) whole cell lysate were fixed in 4% paraformaldehyde at room temperature for 15 minutes. SARS-CoV-2 (COVID-19) Spike S1 stained (green) by ab281309 at 1/1000 dilution in immunocytochemical analysis. Fluoroshield with DAPI (blue).



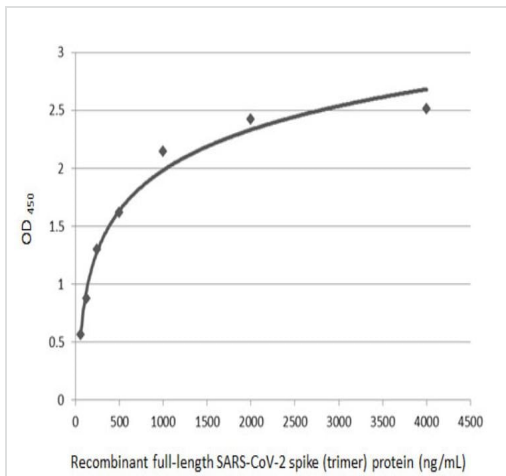
Indirect ELISA - Anti-SARS-CoV-2 Spike Glycoprotein S1 antibody [HL13402] - BSA and Azide free (ab281309)

Indirect ELISA analysis performed by coating plate with recombinant full-length SARS-CoV-2 spike (trimer) protein (50 ng). Coated protein was probed with ab281309 ($100-1.19 \times 10^{-5} \mu\text{M}$). HRP-conjugated Rabbit IgG antibody at 1/10000 dilution was used to detect bound primary antibody. EC50: 0.19 μM



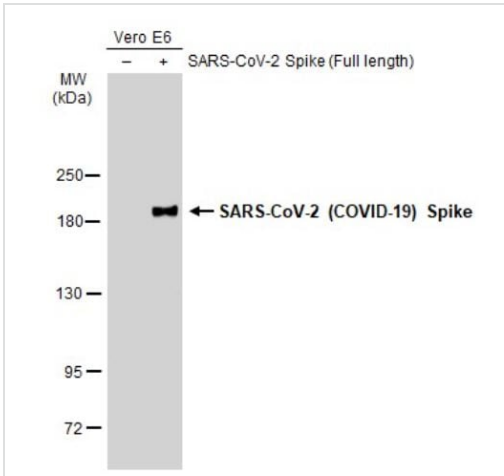
Sandwich ELISA - Anti-SARS-CoV-2 Spike
Glycoprotein S1 antibody [HL13402] (ab281309)

Sandwich ELISA detection of recombinant full-length SARS-CoV-2 spike (trimer) protein using SARS-CoV / SARS-CoV-2 (COVID-19) spike antibody as capture antibody at concentration of 5 µg/mL and ab281309 as detection antibody at concentration of 1 µg/mL. HRP-conjugated Rabbit IgG antibody was diluted at 1/10000 dilution and used to detect the primary antibody.



Indirect ELISA - Anti-SARS-CoV-2 Spike
Glycoprotein S1 antibody [HL13402] - BSA and Azide free (ab281309)

Indirect ELISA analysis performed by coating plate with recombinant full-length SARS-CoV-2 spike (trimer) protein (4000-62.5 ng/mL). Coated protein was probed with ab281309 at 1 µg/mL. HRP-conjugated Rabbit IgG antibody at 1/10000 dilution was used to detect bound primary antibody.



Western blot - Anti-SARS-CoV-2 Spike Glycoprotein S1 antibody [HL13402] - BSA and Azide free (ab281309)

All lanes : Anti-SARS-CoV-2 Spike Glycoprotein S1 antibody [HL13402] - BSA and Azide free (ab281309) at 1/5000 dilution

Lane 1 : Non-transfected Vero E6 whole cell extract

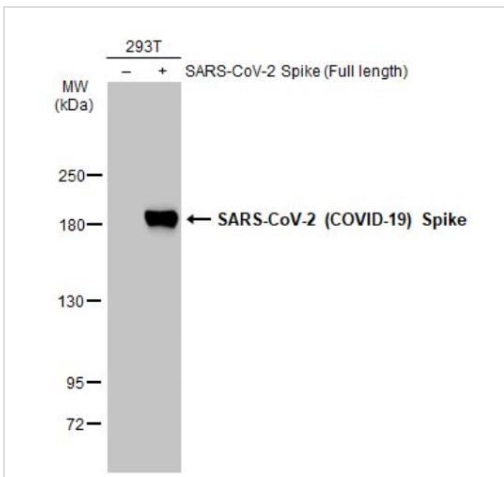
Lane 2 : SARS-CoV-2 Spike transfected Vero E6 whole cell extract

Lysates/proteins at 30 µg per lane.

Secondary

All lanes : HRP-conjugated anti-rabbit IgG antibody

5% SDS-PAGE



Western blot - Anti-SARS-CoV-2 Spike Glycoprotein S1 antibody [HL13402] - BSA and Azide free (ab281309)

All lanes : Anti-SARS-CoV-2 Spike Glycoprotein S1 antibody [HL13402] - BSA and Azide free (ab281309) at 1/5000 dilution

Lane 1 : 293T (Human epithelial cell line from embryonic kidney transformed with large T antigen) whole cell extract

Lane 2 : SARS-CoV-2 Spike transfected 293T whole cell extract

Lysates/proteins at 30 µg per lane.

Secondary

All lanes : HRP-conjugated anti-rabbit IgG antibody

5% SDS-PAGE

Please note: All products are "FOR RESEARCH USE ONLY. NOT FOR USE IN DIAGNOSTIC PROCEDURES"

Our Abpromise to you: Quality guaranteed and expert technical support

- Replacement or refund for products not performing as stated on the datasheet
- Valid for 12 months from date of delivery
- Response to your inquiry within 24 hours
- We provide support in Chinese, English, French, German, Japanese and Spanish
- Extensive multi-media technical resources to help you
- We investigate all quality concerns to ensure our products perform to the highest standards

If the product does not perform as described on this datasheet, we will offer a refund or replacement. For full details of the Abpromise,

please visit <https://www.abcam.com/abpromise> or contact our technical team.

Terms and conditions

- Guarantee only valid for products bought direct from Abcam or one of our authorized distributors