

## Product datasheet

# Anti-SARS-CoV-2 Spike Glycoprotein S1 antibody [T4P5-H12] - BSA and Azide free ab288143

Recombinant

[2 Images](#)

### Overview

|                            |  |
|----------------------------|--|
| <b>Product name</b>        | Anti-SARS-CoV-2 Spike Glycoprotein S1 antibody [T4P5-H12] - BSA and Azide free   |
| <b>Description</b>         | Llama monoclonal [T4P5-H12] to SARS-CoV-2 Spike Glycoprotein S1 - BSA and Azide free   |
| <b>Host species</b>        | Llama  |
| <b>Tested applications</b> | <b>Suitable for:</b> ELISA   |
| <b>Species reactivity</b>  | <b>Reacts with:</b> SARS-CoV-2   |
| <b>Immunogen</b>           | Recombinant fragment (His-tag) corresponding to Human coronavirus SARS-CoV-2 Spike Glycoprotein S1 aa 300-550 (C terminal).<br>Database link: <a href="#">P0DTC2</a>   |
| <b>General notes</b>       | Antibody is supplied as a His-tagged purified protein. It also contains a myc-tag for detection.<br>This product is a recombinant monoclonal antibody, which offers several advantages including: <ul style="list-style-type: none"><li>- High batch-to-batch consistency and reproducibility</li><li>- Improved sensitivity and specificity</li><li>- Long-term security of supply</li><li>- Animal-free production</li></ul> For more information <a href="#">see here</a> . |

### Properties

|                             |   |
|-----------------------------|---|
| <b>Form</b>                 | Liquid  |
| <b>Storage instructions</b> | Shipped at 4°C. Store at +4°C.  |
| <b>Storage buffer</b>       | Constituents: 0.138% Monobasic dihydrogen sodium phosphate, 0.142% Dibasic monohydrogen sodium phosphate, 1.636% Sodium chloride, 98.084% Water |
| <b>Carrier free</b>         | Yes   |
| <b>Purity</b>               | Purified via His tag  |
| <b>Clonality</b>            | Monoclonal  |
| <b>Clone number</b>         | T4P5-H12  |

## Applications

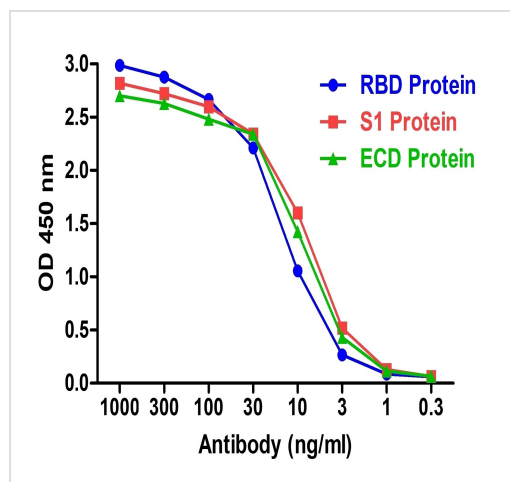
### The Abpromise guarantee

Our **Abpromise guarantee** covers the use of ab288143 in the following tested applications.

The application notes include recommended starting dilutions; optimal dilutions/concentrations should be determined by the end user.

| Application | Abreviews | Notes                                    |
|-------------|-----------|--|
| ELISA       |           | Use at an assay dependent concentration. |

## Images



Direct ELISA using SARS-CoV2 Spike RBD recombinant protein (aa 319-541), SARS-CoV2 Spike S1 RBD recombinant protein (aa 16-685) and SARS-CoV2 Spike ECD (aa 1-1208) as coating antigen at 1 µg/mL. ab288143 was used as detection antibody, followed by an anti-c-Myc antibody at at 1 µg/mL.

Secondary antibody is a Goat anti-Mouse IgG-HRP conjugate at 1/5000 dilution.

ab288143 can detect these proteins at 2 ng/mL.

ELISA - Anti-SARS-CoV-2 Spike Glycoprotein S1 antibody [T4P5-H12] - BSA and Azide free (ab288143)

Why choose a recombinant antibody?



**Research with confidence**  
Consistent and reproducible results



**Long-term and scalable supply**  
Recombinant technology



**Success from the first experiment**  
Confirmed specificity



**Ethical standards compliant**  
Animal-free production

Anti-SARS-CoV-2 Spike Glycoprotein S1 antibody [T4P5-H12] - BSA and Azide free (ab288143)

**Please note:** All products are "FOR RESEARCH USE ONLY. NOT FOR USE IN DIAGNOSTIC PROCEDURES"

## **Our Abpromise to you: Quality guaranteed and expert technical support**

---

- Replacement or refund for products not performing as stated on the datasheet
- Valid for 12 months from date of delivery
- Response to your inquiry within 24 hours
  
- We provide support in Chinese, English, French, German, Japanese and Spanish
- Extensive multi-media technical resources to help you
- We investigate all quality concerns to ensure our products perform to the highest standards

If the product does not perform as described on this datasheet, we will offer a refund or replacement. For full details of the Abpromise, please visit <https://www.abcam.com/abpromise> or contact our technical team.

## **Terms and conditions**

---

- Guarantee only valid for products bought direct from Abcam or one of our authorized distributors