

Product datasheet

Anti-SARS-CoV-2 Spike Glycoprotein S2 antibody [HL237] - BSA and Azide free ab281312

Recombinant

★★★★☆ [1 Abreviews](#) [1 References](#) [5 Images](#)

Overview

Product name	Anti-SARS-CoV-2 Spike Glycoprotein S2 antibody [HL237] - BSA and Azide free
Description	Rabbit monoclonal [HL237] to SARS-CoV-2 Spike Glycoprotein S2 - BSA and Azide free
Host species	Rabbit
Tested applications	Suitable for: WB, IHC-P, Sandwich ELISA, ICC/IF
Species reactivity	Reacts with: SARS-CoV-2
Immunogen	Synthetic peptide within Human coronavirus SARS-CoV-2 Spike Glycoprotein S2. The exact immunogen sequence used to generate this antibody is proprietary information. If additional detail on the immunogen is needed to determine the suitability of the antibody for your needs, please contact our Scientific Support team to discuss your requirements. Carrier-protein conjugated synthetic peptide SARS-CoV-2 (strain Wuhan-Hu-1)
Positive control	IHC-P: SARS-CoV-2 (COVID-19) Spike transfected 293T cell ICC/IF: SARS-CoV-2 (COVID-19) Spike transfected 293T cells. WB: SARS-CoV-2 (COVID-19) Spike transfected 293T cells. ELISA: Recombinant SARS-CoV-2 (COVID-19) Spike S2 (ECD) protein.

Properties

Form	Liquid
Storage instructions	Shipped at 4°C. Store at +4°C.
Storage buffer	Constituent: 100% PBS
Carrier free	Yes
Purity	Protein A purified
Clonality	Monoclonal
Clone number	HL237
Isotype	IgG

Applications

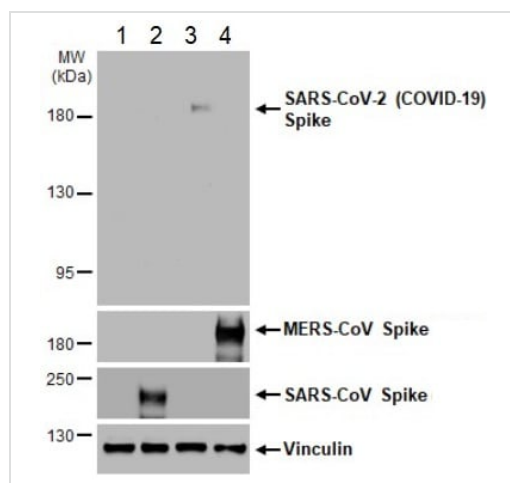
The Abpromise guarantee

Our **Abpromise guarantee** covers the use of ab281312 in the following tested applications.

The application notes include recommended starting dilutions; optimal dilutions/concentrations should be determined by the end user.

Application	Abreviews	Notes
WB		1/1000 - 1/10000.
IHC-P		1/1000. Perform heat mediated antigen retrieval with citrate buffer pH 6 before commencing with IHC staining protocol.
Sandwich ELISA		Use a concentration of 1 µg/ml.
ICC/IF		1/100 - 1/1000.

Images



Western blot - Anti-SARS-CoV-2 Spike Glycoprotein S2 antibody [HL237] - BSA and Azide free (ab281312)

All lanes : Anti-SARS-CoV-2 Spike Glycoprotein S2 antibody [HL237] - BSA and Azide free (ab281312) at 1/5000 dilution

Lane 1 : 293T (Human epithelial cell line from embryonic kidney transformed with large T antigen) whole cell extract

Lane 2 : SARS-CoV Spike transfected 293T whole cell extract

Lane 3 : SARS-CoV-2 (COVID-19) Spike transfected 293T whole cell extract

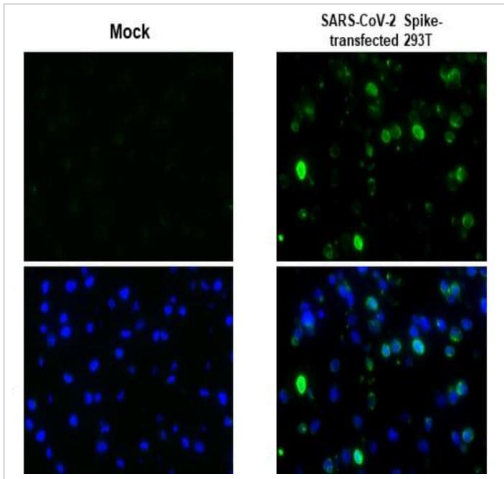
Lane 4 : MERS Spike transfected 293T whole cell extract

Lysates/proteins at 30 µg per lane.

Secondary

All lanes : HRP-conjugated anti-rabbit IgG antibody

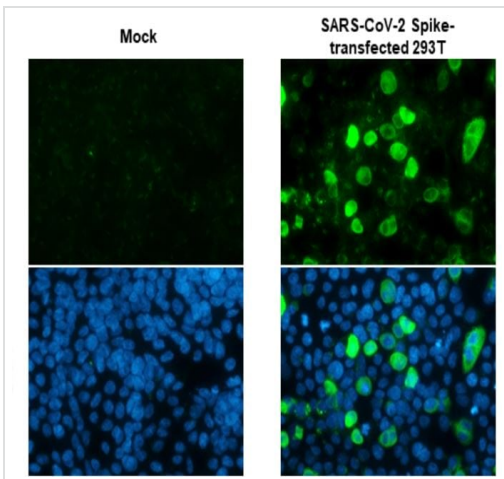
5% SDS-PAGE



Immunohistochemistry (Formalin/PFA-fixed paraffin-embedded sections) - Anti-SARS-CoV-2 Spike Glycoprotein S2 antibody [HL237] - BSA and Azide free (ab281312)

Mock and SARS-CoV-2 (COVID-19) Spike transfected 293T cell FFPE Cell Pellet Block. SARS-CoV-2 (COVID-19) Spike S2 stained (green) by ab281312 at 1/1000 dilution in immunohistochemical analysis. Fluoroshield with DAPI (blue).

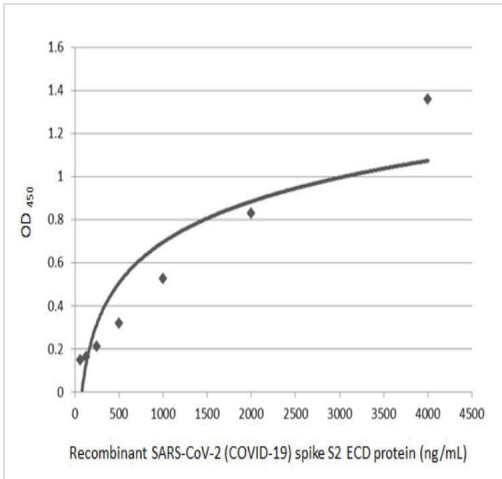
Antigen Retrieval was achieved with Citrate buffer at pH 6.0 for 15 minutes.



Immunocytochemistry/ Immunofluorescence - Anti-SARS-CoV-2 Spike Glycoprotein S2 antibody [HL237] - BSA and Azide free (ab281312)

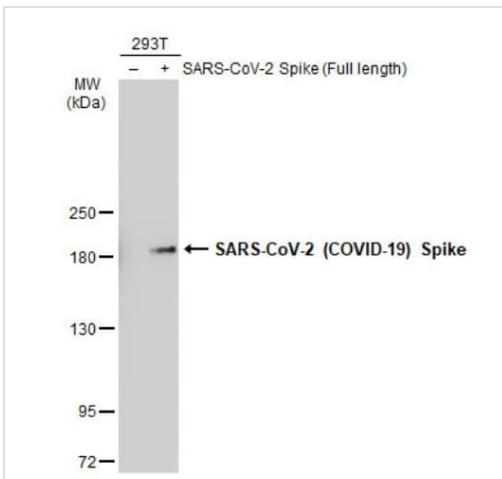
Mock and SARS-CoV-2 (COVID-19) Spike transfected 293T cells were fixed in 4% paraformaldehyde at room temperature for 15 minutes. SARS-CoV-2 (COVID-19) Spike S2 stained (green) by ab281312 at 1/1000 dilution immunocytochemical analysis.

Fluoroshield with DAPI (blue).



Sandwich ELISA - Anti-SARS-CoV-2 Spike Glycoprotein S2 antibody [HL237] - BSA and Azide free (ab281312)

Sandwich ELISA detection of recombinant SARS-CoV-2 (COVID-19) Spike S2 (ECD) protein, mouse IgG Fc tag protein using a SARS-CoV / SARS-CoV-2 (COVID-19) spike antibody as capture antibody at 5 µg/mL and ab281312 as detection antibody at 1 µg/mL. HRP-conjugated Rabbit IgG antibody at 1/10000 dilution and used to detect the primary antibody.



Western blot - Anti-SARS-CoV-2 Spike Glycoprotein S2 antibody [HL237] - BSA and Azide free (ab281312)

All lanes : Anti-SARS-CoV-2 Spike Glycoprotein S2 antibody [HL237] - BSA and Azide free (ab281312) at 1/5000 dilution

Lane 1 : 293T (Human epithelial cell line from embryonic kidney transformed with large T antigen) whole cell extract

Lane 2 : SARS-CoV-2 (COVID-19) Spike transfected 293T whole cell extract

Lysates/proteins at 30 µg per lane.

Secondary

All lanes : HRP-conjugated anti-rabbit IgG antibody

5% SDS-PAGE

Please note: All products are "FOR RESEARCH USE ONLY. NOT FOR USE IN DIAGNOSTIC PROCEDURES"

Our Abpromise to you: Quality guaranteed and expert technical support

- Replacement or refund for products not performing as stated on the datasheet
- Valid for 12 months from date of delivery
- Response to your inquiry within 24 hours
- We provide support in Chinese, English, French, German, Japanese and Spanish
- Extensive multi-media technical resources to help you
- We investigate all quality concerns to ensure our products perform to the highest standards

If the product does not perform as described on this datasheet, we will offer a refund or replacement. For full details of the Abpromise,

please visit <https://www.abcam.com/abpromise> or contact our technical team.

Terms and conditions

- Guarantee only valid for products bought direct from Abcam or one of our authorized distributors