

## Product datasheet

### Anti-SBDS antibody [EPR7819] ab128905

Recombinant RabMAb

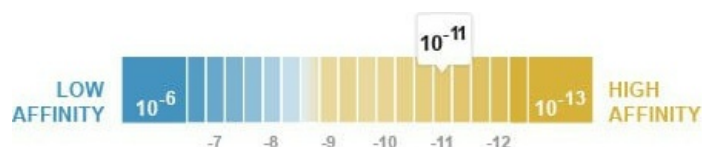
3 Images

#### Overview

<b>Product name</b>	Anti-SBDS antibody [EPR7819]
<b>Description</b>	Rabbit monoclonal [EPR7819] to SBDS
<b>Host species</b>	Rabbit
<b>Tested applications</b>	<b>Suitable for:</b> WB <b>Unsuitable for:</b> Flow Cyt, IHC-P or IP
<b>Species reactivity</b>	<b>Reacts with:</b> Human
<b>Immunogen</b>	Synthetic peptide within Human SBDS aa 1-100. The exact sequence is proprietary.
<b>Positive control</b>	293T and Caco 2 cell lysates
<b>General notes</b>	<p>This product is a recombinant monoclonal antibody, which offers several advantages including:</p> <ul style="list-style-type: none"> <li>- High batch-to-batch consistency and reproducibility</li> <li>- Improved sensitivity and specificity</li> <li>- Long-term security of supply</li> <li>- Animal-free production</li> </ul> <p>For more information <a href="#">see here</a>.</p> <p>Our RabMAb<sup>®</sup> technology is a patented hybridoma-based technology for making rabbit monoclonal antibodies. For details on our patents, please refer to <a href="#">RabMAb<sup>®</sup> patents</a>.</p> <p>Mouse, Rat: We have preliminary internal testing data to indicate this antibody may not react with these species. Please contact us for more information.</p>

#### Properties

<b>Form</b>	Liquid
<b>Storage instructions</b>	Shipped at 4°C. Store at -20°C. Stable for 12 months at -20°C.
<b>Dissociation constant (K<sub>D</sub>)</b>	K <sub>D</sub> = 7.40 x 10 <sup>-11</sup> M



[Learn more about K<sub>D</sub>](#)

<b>Storage buffer</b>	pH: 7.20 Preservative: 0.01% Sodium azide Constituents: 9% PBS, 40% Glycerol (glycerin, glycerine), 0.05% BSA, 50% Tissue culture supernatant
<b>Purity</b>	Protein A purified
<b>Clonality</b>	Monoclonal
<b>Clone number</b>	EPR7819
<b>Isotype</b>	IgG

## Applications

**The Abpromise guarantee** Our **Abpromise guarantee** covers the use of ab128905 in the following tested applications. The application notes include recommended starting dilutions; optimal dilutions/concentrations should be determined by the end user.

Application	Abreviews	Notes
WB		1/1000 - 1/10000. Predicted molecular weight: 29 kDa.

**Application notes** Is unsuitable for Flow Cyt, IHC-P or IP.

## Target

**Function** Required for the assembly of mature ribosomes and ribosome biogenesis. Together with EFTUD1, triggers the GTP-dependent release of EIF6 from 60S pre-ribosomes in the cytoplasm, thereby activating ribosomes for translation competence by allowing 80S ribosome assembly and facilitating EIF6 recycling to the nucleus, where it is required for 60S rRNA processing and nuclear export. Required for normal levels of protein synthesis. May play a role in cellular stress resistance. May play a role in cellular response to DNA damage. May play a role in cell proliferation.

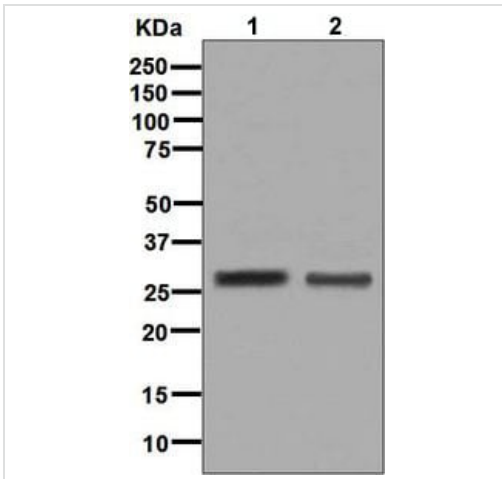
**Tissue specificity** Widely expressed.

**Involvement in disease** Defects in SBDS are the cause of Shwachman-Diamond syndrome (SDS) [MIM:260400]. SDS is an autosomal recessive disorder characterized by pancreatic exocrine insufficiency, hematologic dysfunction, and skeletal abnormalities.

**Sequence similarities** Belongs to the SDO1/SBDS family.

**Cellular localization** Cytoplasm. Nucleus > nucleolus. Nucleus > nucleoplasm. Cytoplasm > cytoskeleton > spindle. Primarily detected in the cytoplasm, and at low levels in nucleus and nucleolus (PubMed:19602484 and PubMed:17475909). Detected in the nucleolus during G1 and G2 phase of the cell cycle, and diffusely distributed in the nucleus during S phase. Detected at the mitotic spindle. Colocalizes with the microtubule organizing center during interphase.

## Images



Western blot - Anti-SBDS antibody [EPR7819]  
(ab128905)

**All lanes** : Anti-SBDS antibody [EPR7819] (ab128905) at 1/1000 dilution

**Lane 1** : 293T cell lysate

**Lane 2** : CaCo 2 cell lysate

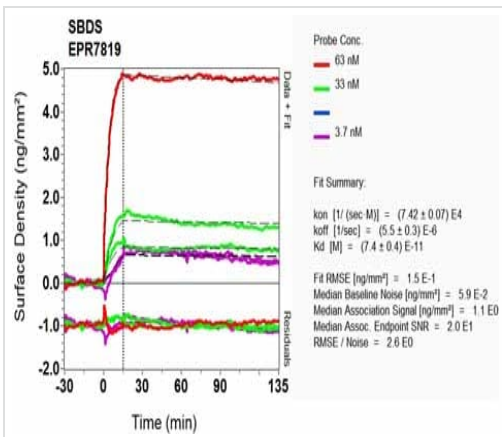
Lysates/proteins at 10 µg per lane.

**Secondary**

**All lanes** : Goat-anti-rabbit HRP at 1/2000 dilution

Developed using the ECL technique.

**Predicted band size:** 29 kDa



SPR Scanning - Anti-SBDS antibody [EPR7819]  
(ab128905)

Equilibrium dissociation constant ( $K_D$ )

Learn more about  $K_D$

[Click here to learn more about  \$K\_D\$](#)

Why choose a recombinant antibody?

**Research with confidence**  
Consistent and reproducible results

**Long-term and scalable supply**  
Recombinant technology

**Success from the first experiment**  
Confirmed specificity

**Ethical standards compliant**  
Animal-free production

Anti-SBDS antibody [EPR7819] (ab128905)

**Please note:** All products are "FOR RESEARCH USE ONLY. NOT FOR USE IN DIAGNOSTIC PROCEDURES"

### Our Abpromise to you: Quality guaranteed and expert technical support

---

- Replacement or refund for products not performing as stated on the datasheet
- Valid for 12 months from date of delivery
- Response to your inquiry within 24 hours
- We provide support in Chinese, English, French, German, Japanese and Spanish
- Extensive multi-media technical resources to help you
- We investigate all quality concerns to ensure our products perform to the highest standards

If the product does not perform as described on this datasheet, we will offer a refund or replacement. For full details of the Abpromise, please visit <https://www.abcam.com/abpromise> or contact our technical team.

### Terms and conditions

---

- Guarantee only valid for products bought direct from Abcam or one of our authorized distributors