

Product datasheet

Anti-Sbf1 antibody [EPR12567] ab181106

Recombinant RabMAb

★★★★★ [1 Abreviews](#) [1 References](#) [7 Images](#)

Overview

Product name	Anti-Sbf1 antibody [EPR12567]
Description	Rabbit monoclonal [EPR12567] to Sbf1
Host species	Rabbit
Tested applications	Suitable for: WB, IHC-P
Species reactivity	Reacts with: Mouse, Human
Immunogen	Synthetic peptide. This information is proprietary to Abcam and/or its suppliers.
Positive control	WB: Raji, Human brain, Mouse cerebellum, and Mouse testis lysates. IHC-P: Human brain and muscle, and mouse cerebrum tissues.
General notes	<p>This product is a recombinant monoclonal antibody, which offers several advantages including:</p> <ul style="list-style-type: none"> - High batch-to-batch consistency and reproducibility - Improved sensitivity and specificity - Long-term security of supply - Animal-free production <p>For more information see here.</p> <p>Our RabMAb[®] technology is a patented hybridoma-based technology for making rabbit monoclonal antibodies. For details on our patents, please refer to RabMAb[®] patents.</p>

Properties

Form	Liquid
Storage instructions	Shipped at 4°C. Store at +4°C short term (1-2 weeks). Upon delivery aliquot. Store at -20°C long term. Avoid freeze / thaw cycle.
Storage buffer	Preservative: 0.01% Sodium azide Constituents: PBS, 40% Glycerol (glycerin, glycerine), 0.05% BSA
Purity	Protein A purified
Clonality	Monoclonal
Clone number	EPR12567
Isotype	IgG

Applications

The Abpromise guarantee

Our **Abpromise guarantee** covers the use of ab181106 in the following tested applications.

The application notes include recommended starting dilutions; optimal dilutions/concentrations should be determined by the end user.

Application	Abreviews	Notes
WB	★★★★★ (1)	1/1000 - 1/10000. Detects a band of approximately 208 kDa (predicted molecular weight: 208 kDa).
IHC-P		1/2000. Perform heat mediated antigen retrieval with Tris/EDTA buffer pH 9.0 before commencing with IHC staining protocol. See IHC antigen retrieval protocols . For unpurified use at 1/250 - 1/500.

Target

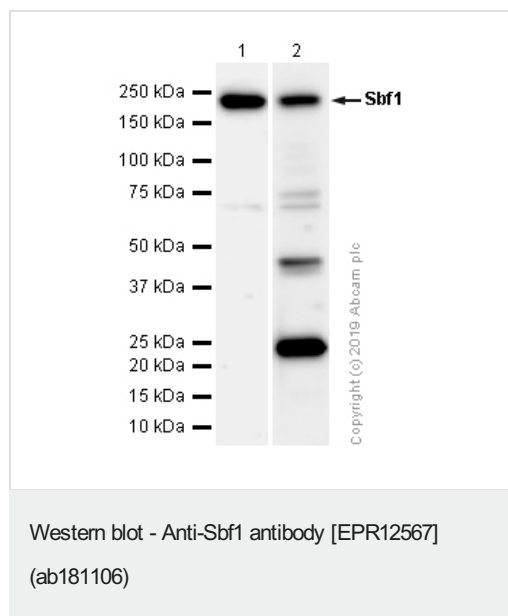
Relevance

Probable pseudophosphatase. Lacks several amino acids in the catalytic pocket which renders it catalytically inactive as a phosphatase. The pocket is however sufficiently preserved to bind phosphorylated substrates, and maybe protect them from phosphatases. Inhibits myoblast differentiation in vitro and induces oncogenic transformation in fibroblasts. May function as a guanine nucleotide exchange factor (GEF) activating RAB28. Promotes the exchange of GDP to GTP, converting inactive GDP-bound Rab proteins into their active GTP-bound form.

Cellular localization

Nuclear

Images



All lanes : Anti-Sbf1 antibody [EPR12567] (ab181106) at 1/1000 dilution (Purified)

Lane 1 : Mouse cerebellum lysates

Lane 2 : Mouse testis lysates

Lysates/proteins at 15 µg per lane.

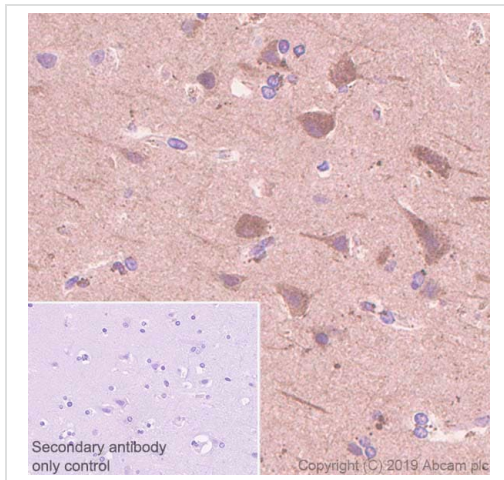
Secondary

All lanes : Goat Anti-Rabbit IgG H&L (HRP) (**ab97051**) at 1/20000 dilution

Predicted band size: 208 kDa

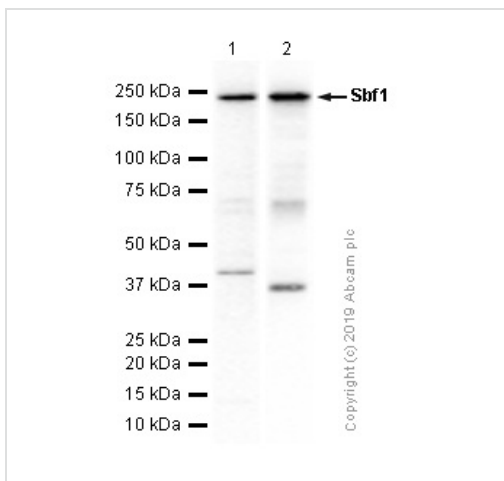
Observed band size: 208 kDa

We are unsure how to define the extra bands.



Immunohistochemistry (Formalin/PFA-fixed paraffin-embedded sections) - Anti-Sbf1 antibody [EPR12567] (ab181106)

Immunohistochemistry (Formalin/PFA-fixed paraffin-embedded sections) analysis of human cerebrum tissue sections labeling Sbf1 with purified ab181106 at 1/2000 dilution (0.54 µg/ml). Heat mediated antigen retrieval using Bond Epitope Retrieval Solution 2 (pH 9.0). Rabbit specific IHC polymer detection kit HRP/DAB (**ab209101**) was used as the secondary antibody. Negative control: PBS instead of the primary antibody. Hematoxylin was used as a counterstain.



Western blot - Anti-Sbf1 antibody [EPR12567] (ab181106)

All lanes : Anti-Sbf1 antibody [EPR12567] (ab181106) at 1/1000 dilution (Purified)

Lane 1 : Raji (Human Burkitt's lymphoma B lymphocyte) whole cell lysates

Lane 2 : Human brain lysates

Lysates/proteins at 15 µg per lane.

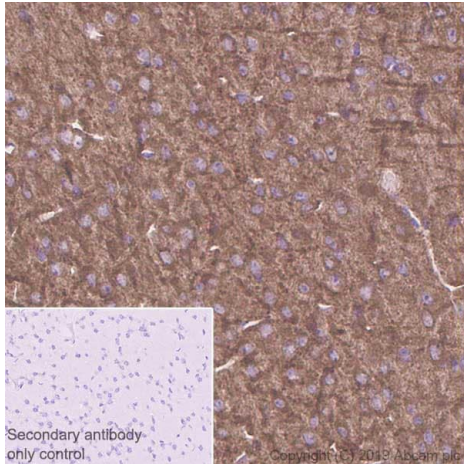
Secondary

All lanes : Goat Anti-Rabbit IgG H&L (HRP) (**ab97051**) at 1/20000 dilution

Predicted band size: 208 kDa

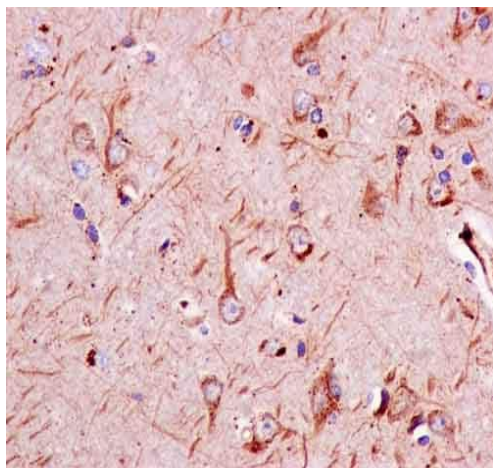
Observed band size: 208 kDa

We are unsure how to define the extra bands.



Immunohistochemistry (Formalin/PFA-fixed paraffin-embedded sections) - Anti-Sbf1 antibody
[EPR12567] (ab181106)

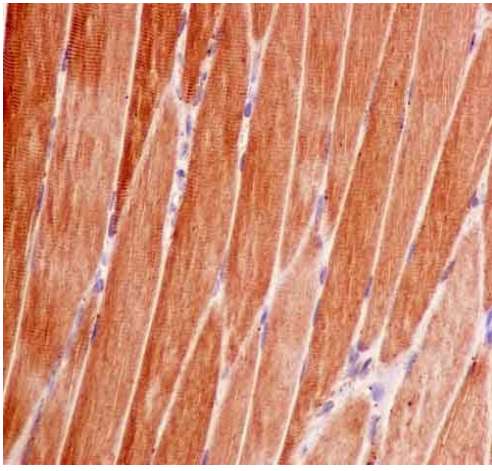
Immunohistochemistry (Formalin/PFA-fixed paraffin-embedded sections) analysis of mouse cerebrum tissue sections labeling Sbf1 with purified ab181106 at 1/2000 dilution (0.54 µg/ml). Heat mediated antigen retrieval using Bond Epitope Retrieval Solution 2 (pH 9.0). Rabbit specific IHC polymer detection kit HRP/DAB ([ab209101](#)) was used as the secondary antibody. Negative control: PBS instead of the primary antibody. Hematoxylin was used as a counterstain.



Immunohistochemistry (Formalin/PFA-fixed paraffin-embedded sections) - Anti-Sbf1 antibody
[EPR12567] (ab181106)

Immunohistochemical analysis of paraffin-embedded Human brain tissue labeling Sbf1 with unpurified ab181106 at 1/500 dilution followed by prediluted HRP Polymer for Rabbit IgG. Counterstained with Hematoxylin.

Perform heat mediated antigen retrieval with EDTA buffer pH 9 before commencing with IHC staining protocol.



Immunohistochemistry (Formalin/PFA-fixed paraffin-embedded sections) - Anti-Sbf1 antibody
[EPR12567] (ab181106)

Immunohistochemical analysis of paraffin-embedded Human muscle tissue labeling Sbf1 with unpurified ab181106 at 1/500 dilution followed by prediluted HRP Polymer for Rabbit IgG. Counterstained with Hematoxylin.

Perform heat mediated antigen retrieval with EDTA buffer pH 9 before commencing with IHC staining protocol.

Why choose a recombinant antibody?



Research with confidence
Consistent and reproducible results



Long-term and scalable supply
Recombinant technology



Success from the first experiment
Confirmed specificity



Ethical standards compliant
Animal-free production

Anti-Sbf1 antibody [EPR12567] (ab181106)

Please note: All products are "FOR RESEARCH USE ONLY. NOT FOR USE IN DIAGNOSTIC PROCEDURES"

Our Abpromise to you: Quality guaranteed and expert technical support

- Replacement or refund for products not performing as stated on the datasheet
- Valid for 12 months from date of delivery
- Response to your inquiry within 24 hours
- We provide support in Chinese, English, French, German, Japanese and Spanish
- Extensive multi-media technical resources to help you

- We investigate all quality concerns to ensure our products perform to the highest standards

If the product does not perform as described on this datasheet, we will offer a refund or replacement. For full details of the Abpromise, please visit <https://www.abcam.com/abpromise> or contact our technical team.

Terms and conditions

- Guarantee only valid for products bought direct from Abcam or one of our authorized distributors