

## Product datasheet

### Anti-SCAMP4 antibody ab106447

[1 Image](#)

#### Overview

---

<b>Product name</b>	Anti-SCAMP4 antibody
<b>Description</b>	Rabbit polyclonal to SCAMP4
<b>Host species</b>	Rabbit
<b>Specificity</b>	ab106447 is predicted to not cross-react with any other member of the secretory carrier membrane protein family.
<b>Tested applications</b>	<b>Suitable for:</b> WB
<b>Species reactivity</b>	<b>Reacts with:</b> Mouse
<b>Immunogen</b>	Synthetic peptide corresponding to 15 amino acids near the C terminal of Human SCAMP4 (NP_524558).
<b>Positive control</b>	WB: 3T3 cell lysate.
<b>General notes</b>	<p>The Life Science industry has been in the grips of a reproducibility crisis for a number of years. Abcam is leading the way in addressing this with our range of recombinant monoclonal antibodies and knockout edited cell lines for gold-standard validation. Please check that this product meets your needs before purchasing.</p> <p>If you have any questions, special requirements or concerns, please send us an inquiry and/or contact our Support team ahead of purchase. Recommended alternatives for this product can be found below, along with publications, customer reviews and Q&amp;As</p>

#### Properties

---

<b>Form</b>	Liquid
<b>Storage instructions</b>	Shipped at 4°C. Store at +4°C short term (1-2 weeks). Store at -20°C or -80°C. Avoid freeze / thaw cycle.
<b>Storage buffer</b>	pH: 7.2 Preservative: 0.02% Sodium azide Constituent: 99% PBS
<b>Purity</b>	Immunogen affinity purified
<b>Purification notes</b>	ab106447 was purified by affinity chromatography via a peptide column.
<b>Clonality</b>	Polyclonal
<b>Isotype</b>	IgG

## Applications

**The Abpromise guarantee** Our **Abpromise guarantee** covers the use of ab106447 in the following tested applications. The application notes include recommended starting dilutions; optimal dilutions/concentrations should be determined by the end user.

Application	Abreviews	Notes
WB		Use a concentration of 1 - 2 µg/ml. Predicted molecular weight: 26 kDa.

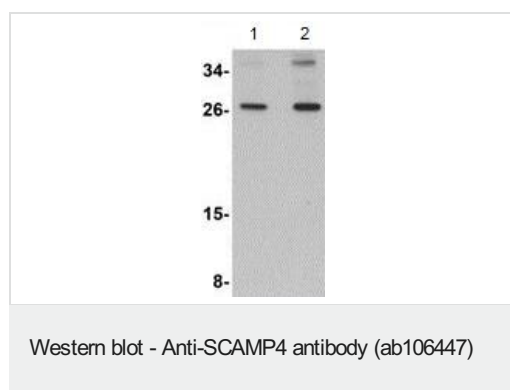
## Target

**Function** Probably involved in membrane protein trafficking.

**Sequence similarities** Belongs to the SCAMP family.

**Cellular localization** Membrane.

## Images



**Lane 1** : Anti-SCAMP4 antibody (ab106447) at 1 µg/ml

**Lane 2** : Anti-SCAMP4 antibody (ab106447) at 2 µg/ml

**All lanes** : 3T3 cell lysate

Lysates/proteins at 15 µg per lane.

**Predicted band size:** 26 kDa

**Please note:** All products are "FOR RESEARCH USE ONLY. NOT FOR USE IN DIAGNOSTIC PROCEDURES"

## Our Abpromise to you: Quality guaranteed and expert technical support

- Replacement or refund for products not performing as stated on the datasheet
- Valid for 12 months from date of delivery
- Response to your inquiry within 24 hours
- We provide support in Chinese, English, French, German, Japanese and Spanish
- Extensive multi-media technical resources to help you
- We investigate all quality concerns to ensure our products perform to the highest standards

If the product does not perform as described on this datasheet, we will offer a refund or replacement. For full details of the Abpromise, please visit <https://www.abcam.com/abpromise> or contact our technical team.

## Terms and conditions

- Guarantee only valid for products bought direct from Abcam or one of our authorized distributors