


## Product datasheet

### Anti-SCAMP5 antibody ab3432

★★★★☆ [2 Abreviews](#) [3 References](#) [1 Image](#)

#### Overview

<b>Product name</b>	Anti-SCAMP5 antibody
<b>Description</b>	Rabbit polyclonal to SCAMP5
<b>Host species</b>	Rabbit
<b>Tested applications</b>	<b>Suitable for:</b> WB
<b>Species reactivity</b>	<b>Reacts with:</b> Rat <b>Predicted to work with:</b> Mouse, Human 
<b>Immunogen</b>	Synthetic peptide corresponding to Rat SCAMP5 aa 217-233. Sequence: NQPQTQYSATPNYTYSN  (Peptide available as <a href="#">ab4971</a> )

 [Run BLAST with](#)

 [Run BLAST with](#)

#### General notes

The Life Science industry has been in the grips of a reproducibility crisis for a number of years. Abcam is leading the way in addressing this with our range of recombinant monoclonal antibodies and knockout edited cell lines for gold-standard validation. Please check that this product meets your needs before purchasing.

If you have any questions, special requirements or concerns, please send us an inquiry and/or contact our Support team ahead of purchase. Recommended alternatives for this product can be found below, along with publications, customer reviews and Q&As

#### Properties

<b>Form</b>	Liquid
<b>Storage instructions</b>	Shipped at 4°C. Store at +4°C short term (1-2 weeks). Upon delivery aliquot. Store at -20°C or -80°C. Avoid freeze / thaw cycle.
<b>Storage buffer</b>	Preservative: 0.05% Sodium azide Constituents: 0.1% BSA, 99% PBS
<b>Purity</b>	Immunogen affinity purified
<b>Clonality</b>	Polyclonal
<b>Isotype</b>	IgG

## Applications

### The Abpromise guarantee

Our **Abpromise guarantee** covers the use of ab3432 in the following tested applications.

The application notes include recommended starting dilutions; optimal dilutions/concentrations should be determined by the end user.

Application	Abreviews	Notes
WB	★★★★★ (2)	Use a concentration of 2 µg/ml. Detects a band of approximately 25 kDa.

## Target

### Function

Required for the calcium-dependent exocytosis of signal sequence-containing cytokines such as CCL5. Probably acts in cooperation with the SNARE machinery. May play a role in accumulation of expanded polyglutamine (polyQ) protein huntingtin (HTT) in case of endoplasmic reticulum stress by inhibiting the endocytosis pathway.

### Tissue specificity

Expressed both by neuronal and nonneuronal tissues. Expressed in brain, stomach, thyroid, spinal cord, lymph node, trachea, adrenal gland, bone marrow and in the different parts of brain. In thyroid tissues, it is expressed by the follicular epithelial cells. In the adrenal gland tissues it is detected in the zona fasciculate of the cortex region (at protein level).

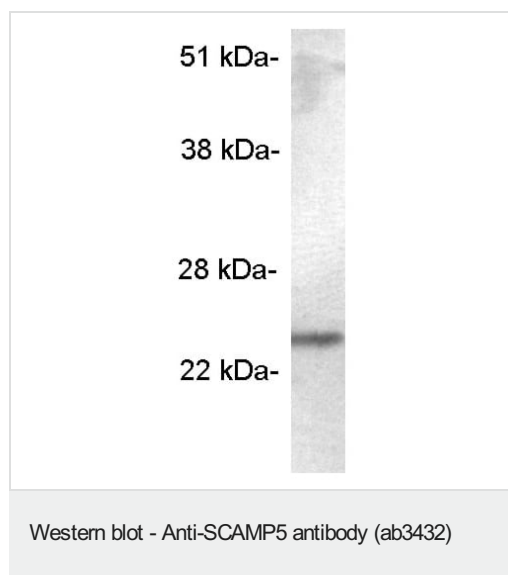
### Sequence similarities

Belongs to the SCAMP family. SCAMP5 subfamily.

### Cellular localization

Cell membrane. Golgi apparatus membrane. Golgi apparatus > trans-Golgi network membrane. Recycling endosome membrane. Cytoplasmic vesicle > secretory vesicle > synaptic vesicle membrane. Mainly localizes in Golgi apparatus membrane. Upon calcium-triggered exocytosis, it translocates to the cell membrane. Highly enriched in synaptic vesicles.

## Images



Anti-SCAMP5 antibody (ab3432) + Rat brain extract

**Observed band size:** 25 kDa

**Please note:** All products are "FOR RESEARCH USE ONLY. NOT FOR USE IN DIAGNOSTIC PROCEDURES"

### **Our Abpromise to you: Quality guaranteed and expert technical support**

---

- Replacement or refund for products not performing as stated on the datasheet
- Valid for 12 months from date of delivery
- Response to your inquiry within 24 hours
  
- We provide support in Chinese, English, French, German, Japanese and Spanish
- Extensive multi-media technical resources to help you
- We investigate all quality concerns to ensure our products perform to the highest standards

If the product does not perform as described on this datasheet, we will offer a refund or replacement. For full details of the Abpromise, please visit <https://www.abcam.com/abpromise> or contact our technical team.

### **Terms and conditions**

---

- Guarantee only valid for products bought direct from Abcam or one of our authorized distributors