

## Product datasheet

# Anti-Scavenging Receptor SR-BI antibody ab106572

[8 References](#) [3 Images](#)

### Overview

---

<b>Product name</b>	Anti-Scavenging Receptor SR-BI antibody
<b>Description</b>	Rabbit polyclonal to Scavenging Receptor SR-BI
<b>Host species</b>	Rabbit
<b>Tested applications</b>	<b>Suitable for:</b> ICC/IF, WB, IHC-P
<b>Species reactivity</b>	<b>Reacts with:</b> Human
<b>Immunogen</b>	A 15 amino acid peptide near the amino terminus of Human Scavenging Receptor SR-BI.
<b>Positive control</b>	WB: Human spleen tissue lysate IHC-P: Human spleen tissue
<b>General notes</b>	<p>The Life Science industry has been in the grips of a reproducibility crisis for a number of years. Abcam is leading the way in addressing this with our range of recombinant monoclonal antibodies and knockout edited cell lines for gold-standard validation. Please check that this product meets your needs before purchasing.</p> <p>If you have any questions, special requirements or concerns, please send us an inquiry and/or contact our Support team ahead of purchase. Recommended alternatives for this product can be found below, along with publications, customer reviews and Q&amp;As</p>

### Properties

---

<b>Form</b>	Liquid
<b>Storage instructions</b>	Shipped at 4°C. Store at 4°C (stable for up to 12 months).
<b>Storage buffer</b>	pH: 7.2 Preservative: 0.02% Sodium azide Constituent: PBS
<b>Purity</b>	Immunogen affinity purified
<b>Clonality</b>	Polyclonal
<b>Isotype</b>	IgG

### Applications

---

**The Abpromise guarantee** Our **Abpromise guarantee** covers the use of ab106572 in the following tested applications. The application notes include recommended starting dilutions; optimal dilutions/concentrations should be determined by the end user.

Application	Abreviews	Notes
ICC/IF		Use a concentration of 20 µg/ml.
WB		Use a concentration of 1 - 2 µg/ml. Predicted molecular weight: 61 kDa.
IHC-P		Use a concentration of 2.5 µg/ml.

## Target

### Function

Receptor for different ligands such as phospholipids, cholesterol ester, lipoproteins, phosphatidylserine and apoptotic cells. Probable receptor for HDL, located in particular region of the plasma membrane, called caveolae. Facilitates the flux of free and esterified cholesterol between the cell surface and extracellular donors and acceptors, such as HDL and to a lesser extent, apoB-containing lipoproteins and modified lipoproteins. Probably involved in the phagocytosis of apoptotic cells, via its phosphatidylserine binding activity. Receptor for hepatitis C virus glycoprotein E2. Binding between SCARB1 and E2 was found to be independent of the genotype of the viral isolate. Plays an important role in the uptake of HDL cholesteryl ester.

### Tissue specificity

Widely expressed.

### Sequence similarities

Belongs to the CD36 family.

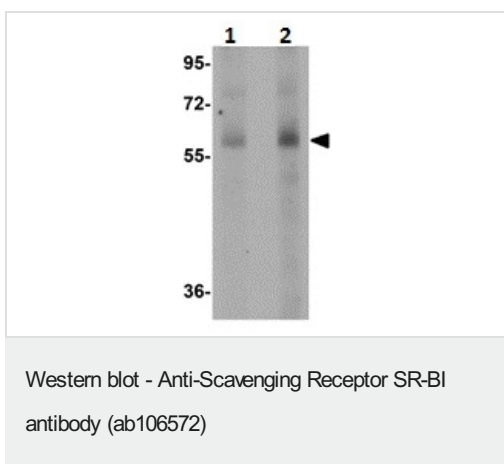
### Post-translational modifications

N-glycosylated.

### Cellular localization

Cell membrane. Membrane > caveola. Predominantly localized to cholesterol and sphingomyelin-enriched domains within the plasma membrane, called caveolae.

## Images



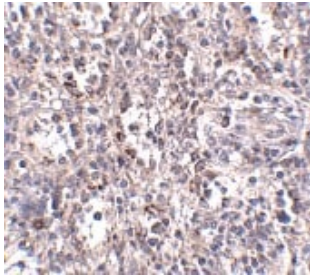
**Lane 1** : Anti-Scavenging Receptor SR-BI antibody (ab106572) at 1 µg/ml

**Lane 2** : Anti-Scavenging Receptor SR-BI antibody (ab106572) at 2 µg/ml

**All lanes** : Human spleen tissue lysate

Lysates/proteins at 15 µg per lane.

**Predicted band size:** 61 kDa



Immunohistochemical analysis of Scavenging Receptor SR-BI in paraffin embedded Human spleen tissue sections, using ab106572 at 2.5 µg/ml.

Immunohistochemistry (Formalin/PFA-fixed paraffin-embedded sections) - Anti-Scavenging Receptor SR-BI antibody (ab106572)

Immunocytochemistry/ Immunofluorescence - Anti-Scavenging Receptor SR-BI antibody (ab106572)

Immunofluorescence of SCARB1 in Human Spleen cells using ab106572 at 20 ug/ml.

**Please note:** All products are "FOR RESEARCH USE ONLY. NOT FOR USE IN DIAGNOSTIC PROCEDURES"

### Our Abpromise to you: Quality guaranteed and expert technical support

---

- Replacement or refund for products not performing as stated on the datasheet
- Valid for 12 months from date of delivery
- Response to your inquiry within 24 hours
- We provide support in Chinese, English, French, German, Japanese and Spanish
- Extensive multi-media technical resources to help you
- We investigate all quality concerns to ensure our products perform to the highest standards

If the product does not perform as described on this datasheet, we will offer a refund or replacement. For full details of the Abpromise, please visit <https://www.abcam.com/abpromise> or contact our technical team.

### Terms and conditions

---

- Guarantee only valid for products bought direct from Abcam or one of our authorized distributors