



## Product datasheet

### Anti-SCG10 antibody ab21190

[2 References](#) [2 Images](#)

#### Overview

<b>Product name</b>	Anti-SCG10 antibody
<b>Description</b>	Goat polyclonal to SCG10
<b>Host species</b>	Goat
<b>Tested applications</b>	<b>Suitable for:</b> ICC/IF, WB
<b>Species reactivity</b>	<b>Reacts with:</b> Human
<b>Immunogen</b>	<p>Synthetic peptide within Human SCG10 aa 1-100 (N terminal). The exact immunogen sequence used to generate this antibody is proprietary information. If additional detail on the immunogen is needed to determine the suitability of the antibody for your needs, please <b><a href="#">contact</a></b> our Scientific Support team to discuss your requirements.</p> <p>Database link: <b><a href="#">Q93045</a></b></p> <div>  <b><a href="#">Run BLAST with</a></b>  <b><a href="#">Run BLAST with</a></b> </div>
<b>Positive control</b>	Human Brain lysate, A431 lysate ICC/IF: HeLa cells
<b>General notes</b>	<p>The Life Science industry has been in the grips of a reproducibility crisis for a number of years. Abcam is leading the way in addressing this with our range of recombinant monoclonal antibodies and knockout edited cell lines for gold-standard validation. Please check that this product meets your needs before purchasing.</p> <p>If you have any questions, special requirements or concerns, please send us an inquiry and/or contact our Support team ahead of purchase. Recommended alternatives for this product can be found below, along with publications, customer reviews and Q&amp;As</p>

#### Properties

<b>Form</b>	Liquid
<b>Storage instructions</b>	Shipped at 4°C. Upon delivery aliquot and store at -20°C or -80°C. Avoid repeated freeze / thaw cycles.
<b>Storage buffer</b>	<p>pH: 7.30</p> <p>Preservative: 0.02% Sodium azide</p> <p>Constituents: Tris buffered saline, 0.5% BSA</p>
<b>Purity</b>	Immunogen affinity purified
<b>Purification notes</b>	Purified from goat serum by ammonium sulphate precipitation followed by antigen affinity chromatography using the immunizing peptide.

<b>Clonality</b>	Polyclonal
<b>Isotype</b>	IgG

## Applications

**The Abpromise guarantee** Our **Abpromise guarantee** covers the use of ab21190 in the following tested applications.

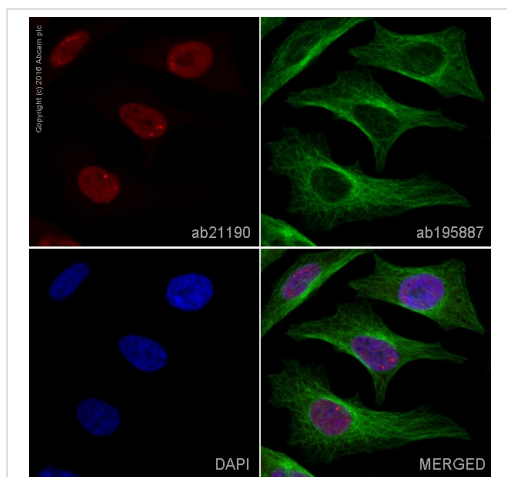
The application notes include recommended starting dilutions; optimal dilutions/concentrations should be determined by the end user.

Application	Abreviews	Notes
ICC/IF		1/100. This product gave a positive signal in HeLa cells fixed with 4% formaldehyde (10 min).
WB		Use a concentration of 0.1 - 1 µg/ml. Predicted molecular weight: 20.8 kDa. A 1 hour primary incubation is recommended for this product.

## Target

<b>Function</b>	Is a key regulator of neurite extension through regulation of microtubule instability.
<b>Tissue specificity</b>	Neuron specific.
<b>Sequence similarities</b>	Belongs to the stathmin family.
<b>Post-translational modifications</b>	Sumoylated.
<b>Cellular localization</b>	Cytoplasm. Cytoplasm > perinuclear region. Cell projection > growth cone. Membrane. Cell projection > axon. Associated with punctate structures in the perinuclear cytoplasm, axons, and growth cones of developing neurons. SCG10 exists in both soluble and membrane-bound forms.

## Images



Immunocytochemistry/ Immunofluorescence - Anti-SCG10 antibody (ab21190)

Ab211990 staining TAF9 in HeLa cells. The cells were fixed with 4% formaldehyde (10 min), permeabilized with 0.1% Triton X-100 for 5 minutes and then blocked with 1% BSA/10% normal goat serum/0.3M glycine in 0.1% PBS-Tween for 1h. The cells were then incubated overnight at +4°C with **ab211990** at 1/100 dilution (**pseudocolored in red**) and **ab195887**, Mouse monoclonal to alpha Tubulin (Alexa Fluor® 488). Nuclear DNA was labelled with DAPI (shown in blue).

Image was taken with a confocal microscope (Leica-Microsystems, TCS SP8).



Western blot - Anti-SCG10 antibody (ab21190)

Anti-SCG10 antibody (ab21190) at 1 µg/ml + Human Brain lysate (RIPA buffer, 35µg total protein per lane).

**Predicted band size:** 20.8 kDa

Primary incubated for 1 hour. Detected by western blot using chemiluminescence.

**Please note:** All products are "FOR RESEARCH USE ONLY. NOT FOR USE IN DIAGNOSTIC PROCEDURES"

## Our Abpromise to you: Quality guaranteed and expert technical support

- Replacement or refund for products not performing as stated on the datasheet
- Valid for 12 months from date of delivery
- Response to your inquiry within 24 hours
- We provide support in Chinese, English, French, German, Japanese and Spanish
- Extensive multi-media technical resources to help you
- We investigate all quality concerns to ensure our products perform to the highest standards

If the product does not perform as described on this datasheet, we will offer a refund or replacement. For full details of the Abpromise, please visit <https://www.abcam.com/abpromise> or contact our technical team.

## Terms and conditions

- Guarantee only valid for products bought direct from Abcam or one of our authorized distributors