

# Anti-Sclerostin antibody [EPR22360-1] - BSA and Azide free (Capture) ab267447

Recombinant RabMAb

2 Images

## Overview

<b>Product name</b>	Anti-Sclerostin antibody [EPR22360-1] - BSA and Azide free (Capture)
<b>Description</b>	Rabbit monoclonal [EPR22360-1] to Sclerostin - BSA and Azide free (Capture)
<b>Host species</b>	Rabbit
<b>Tested applications</b>	<b>Suitable for:</b> Sandwich ELISA
<b>Species reactivity</b>	<b>Reacts with:</b> Rat
<b>Immunogen</b>	Recombinant full length protein. This information is proprietary to Abcam and/or its suppliers.
<b>General notes</b>	<p>ab267447 is a BSA and Azide Free antibody supplied in an unconjugated format and it is suitable for sandwich ELISAs to quantify Rat Sclerostin. The recommended pair for sandwich ELISA is:</p> <p>Capture: ab267447, Rat Sclerostin (SOST) Capture Antibody (unconjugated)</p> <p>Detector: <b>ab267448</b>, Rat Sclerostin (SOST) Detector Antibody (unconjugated)</p> <p>The reference range value is 15.625 - 1000 pg/ml.</p> <p>Our <b>carrier-free</b> antibodies are typically supplied in a PBS-only formulation, purified and free of BSA, sodium azide and glycerol. The carrier-free buffer and high concentration allow for increased conjugation efficiency.</p> <p>This conjugation-ready format is designed for use with fluorochromes, metal isotopes, oligonucleotides, and enzymes, which makes them ideal for antibody labelling, functional and cell-based assays, flow-based assays (e.g. mass cytometry) and Multiplex Imaging applications.</p> <p>Use our <b>conjugation kits</b> for antibody conjugates that are ready-to-use in as little as 20 minutes with &lt;1 minute hands-on-time and 100% antibody recovery: available for fluorescent dyes, HRP, biotin and gold.</p> <p>The recommended antibody orientation is based on internal optimization for ELISA-based assays. Antibody orientation is assay dependent and needs to be optimized for each assay type. Please note that the range provided for this antibody is only an estimation based on the performance of the product using the recommended antibody pair. Performance of the antibody pair will depend on the specific characteristics of your assay. We guarantee the product works in sandwich ELISA, but we do not guarantee the sensitivity or dynamic range of the antibody in your assay.</p> <p>This product is a recombinant monoclonal antibody, which offers several advantages including:</p>

- High batch-to-batch consistency and reproducibility
- Improved sensitivity and specificity
- Long-term security of supply
- Animal-free production

For more information [see here](#).

Our RabMAb® technology is a patented hybridoma-based technology for making rabbit monoclonal antibodies. For details on our patents, please refer to [RabMAb® patents](#).

## Properties

<b>Form</b>	Liquid
<b>Storage instructions</b>	Shipped at 4°C. Store at +4°C.
<b>Storage buffer</b>	Constituent: 100% PBS
<b>Carrier free</b>	Yes
<b>Purity</b>	Protein A purified
<b>Clonality</b>	Monoclonal
<b>Clone number</b>	EPR22360-1
<b>Isotype</b>	IgG

## Applications

**The Abpromise guarantee** Our [Abpromise guarantee](#) covers the use of ab267447 in the following tested applications. The application notes include recommended starting dilutions; optimal dilutions/concentrations should be determined by the end user.

Application	Abreviews	Notes
<b>Sandwich ELISA</b>		Use at an assay dependent concentration. Can be paired for Sandwich ELISA with <a href="#">PE / R-Phycoerythrin Conjugation Kit - Lightning-Link® (ab102918)</a> and <a href="#">Biotinylation Kit / Biotin Conjugation Kit (Fast and Type A) - Lightning-Link® (ab201795)</a> .

## Target

<b>Function</b>	Negative regulator of bone growth.
<b>Tissue specificity</b>	Widely expressed at low levels with highest levels in bone, cartilage, kidney, liver, bone marrow and primary osteoblasts differentiated for 21 days.
<b>Involvement in disease</b>	Defects in SOST are the cause of sclerosteosis (SOST) [MIM:269500]; also known as cortical hyperostosis with syndactyly. SOST is an autosomal recessive sclerosing bone dysplasia characterized by a generalized hyperostosis and sclerosis leading to a markedly thickened skull, with mandible, ribs, clavicles and all long bones also being affected. Due to narrowing of the foramina of the cranial nerves, facial nerve palsy, hearing loss and atrophy of the optic nerves can occur. Sclerosteosis is clinically and radiologically very similar to van Buchem disease, mainly differentiated by hand malformations and a large stature in sclerosteosis patients. Note=A 52 kb deletion downstream of SOST results in SOST transcription suppression and is a

cause of van Buchem disease (VBCH) [MIM:239100]; also known as hyperostosis corticalis generalisata. VBCH is an autosomal recessive sclerosing bone dysplasia characterized by endosteal hyperostosis of the mandible, skull, ribs, clavicles, and diaphyses of the long bones. Affected patients present a symmetrically increased thickness of bones, most frequently found as an enlarged jawbone, but also an enlargement of the skull, ribs, diaphysis of long bones, as well as tubular bones of hands and feet. The clinical consequence of increased thickness of the skull include facial nerve palsy causing hearing loss, visual problems, neurological pain, and, very rarely, blindness as a consequence of optic atrophy. Serum alkaline phosphatase levels are elevated.

### Sequence similarities

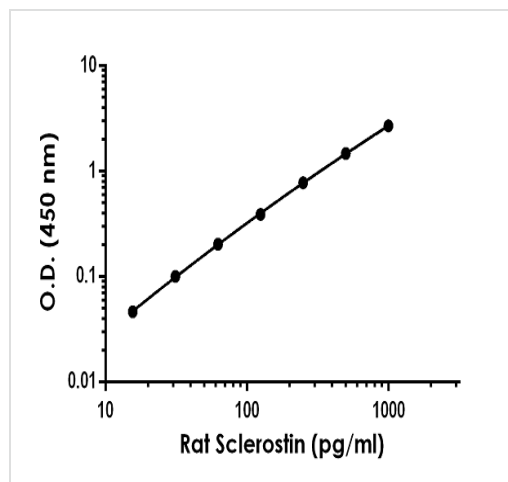
Belongs to the sclerostin family.

Contains 1 CTCK (C-terminal cystine knot-like) domain.

### Cellular localization

Secreted.

### Images



Representative standard curve from corresponding SimpleStep ELISA® Kit ([ab264622](#)).

Sandwich ELISA - Anti-Sclerostin antibody  
[EPR22360-1] - BSA and Azide free (Capture)  
(ab267447)

Why choose a recombinant antibody?

**Research with confidence**  
Consistent and reproducible results

**Long-term and scalable supply**  
Recombinant technology

**Success from the first experiment**  
Confirmed specificity

**Ethical standards compliant**  
Animal-free production

Anti-Sclerostin antibody [EPR22360-1] - BSA and Azide free (Capture) (ab267447)

**Please note:** All products are "FOR RESEARCH USE ONLY. NOT FOR USE IN DIAGNOSTIC PROCEDURES"

### **Our Abpromise to you: Quality guaranteed and expert technical support**

---

- Replacement or refund for products not performing as stated on the datasheet
- Valid for 12 months from date of delivery
- Response to your inquiry within 24 hours
- We provide support in Chinese, English, French, German, Japanese and Spanish
- Extensive multi-media technical resources to help you
- We investigate all quality concerns to ensure our products perform to the highest standards

If the product does not perform as described on this datasheet, we will offer a refund or replacement. For full details of the Abpromise, please visit <https://www.abcam.com/abpromise> or contact our technical team.

### **Terms and conditions**

---

- Guarantee only valid for products bought direct from Abcam or one of our authorized distributors