

Product datasheet

Anti-SCP1 antibody ab15090

★★★★★ [3 Abreviews](#) [102 References](#) [2 Images](#)

Overview

Product name	Anti-SCP1 antibody
Description	Rabbit polyclonal to SCP1
Host species	Rabbit
Tested applications	Suitable for: IHC-Fr, IHC-P, ICC/IF
Species reactivity	Reacts with: Mouse
Immunogen	Synthetic peptide corresponding to Mouse SCP1 (C terminal). Database link: Q62209
General notes	<p>The Life Science industry has been in the grips of a reproducibility crisis for a number of years. Abcam is leading the way in addressing this with our range of recombinant monoclonal antibodies and knockout edited cell lines for gold-standard validation. Please check that this product meets your needs before purchasing.</p> <p>If you have any questions, special requirements or concerns, please send us an inquiry and/or contact our Support team ahead of purchase. Recommended alternatives for this product can be found below, along with publications, customer reviews and Q&As</p>

Properties

Form	Liquid
Storage instructions	Shipped at 4°C. Store at +4°C short term (1-2 weeks). Store at -20°C or -80°C. Avoid freeze / thaw cycle.
Storage buffer	pH: 7.4 Preservative: 0.1% Sodium azide Constituent: Tris citrate/phosphate
Purity	Immunogen affinity purified
Clonality	Polyclonal
Isotype	IgG

Applications

The Abpromise guarantee Our **[Abpromise guarantee](#)** covers the use of ab15090 in the following tested applications.

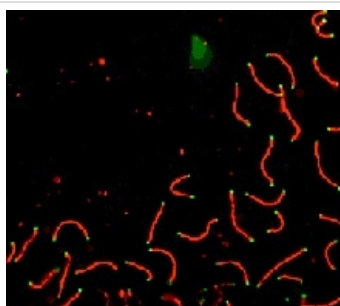
The application notes include recommended starting dilutions; optimal dilutions/concentrations should be determined by the end user.

Application	Abreviews	Notes
IHC-Fr	★★★★★ (1)	Use at an assay dependent concentration.
IHC-P	★★★☆☆ (1)	1/750.
ICC/IF	★★★★★ (1)	1/100 - 1/750.

Target

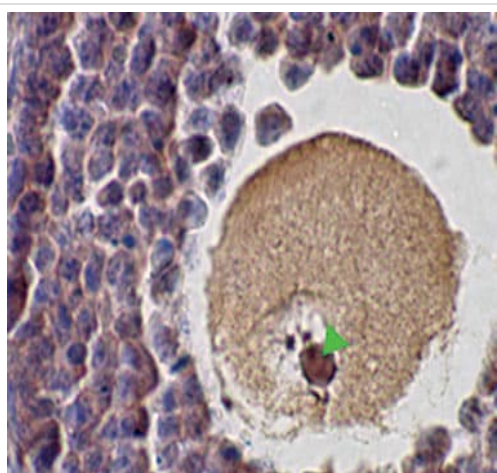
Function	Major component of the transverse filaments of synaptonemal complexes (SCS), formed between homologous chromosomes during meiotic prophase.
Tissue specificity	Testis.
Domain	Consists of an alpha-helical stretch of 700 AA residues, flanked by N- and C-terminal globular domains. The C-terminal domain has DNA-binding capacity.
Cellular localization	Nucleus. Chromosome. In tripartite segments of synaptonemal complexes, between lateral elements in the nucleus. Found only where the chromosome cores are synapsed. Its N-terminus is found towards the center of the synaptonemal complex while the C-terminus extends well into the lateral domain of the synaptonemal complex.

Images



SCP1 labeled in mouse pachytene preparation (red), using ab15090. CDK2 staining, near teleomeres, is also present (green).

Immunocytochemistry/ Immunofluorescence - Anti-SCP1 antibody (ab15090)



Paraffin embedded IHC image of Murine SCP1 in mouse ovary using ab15090 at 1:750 dilution and secondary at 1:400.

Immunohistochemistry (Formalin/PFA-fixed paraffin-embedded sections) - Anti-SCP1 antibody (ab15090)

Please note: All products are "FOR RESEARCH USE ONLY. NOT FOR USE IN DIAGNOSTIC PROCEDURES"

Our Abpromise to you: Quality guaranteed and expert technical support

- Replacement or refund for products not performing as stated on the datasheet
- Valid for 12 months from date of delivery
- Response to your inquiry within 24 hours
- We provide support in Chinese, English, French, German, Japanese and Spanish
- Extensive multi-media technical resources to help you
- We investigate all quality concerns to ensure our products perform to the highest standards

If the product does not perform as described on this datasheet, we will offer a refund or replacement. For full details of the Abpromise, please visit <https://www.abcam.com/abpromise> or contact our technical team.

Terms and conditions

- Guarantee only valid for products bought direct from Abcam or one of our authorized distributors