


Product datasheet

Anti-SCP3 antibody [Cor 10G11/7] ab97672

Recombinant

★★★★★ [10 Abreviews](#) [144 References](#) [6 Images](#)

Overview

Product name	Anti-SCP3 antibody [Cor 10G11/7]
Description	Mouse monoclonal [Cor 10G11/7] to SCP3
Host species	Mouse
Tested applications	Suitable for: IHC-P, WB
Species reactivity	Reacts with: Mouse, Rat Predicted to work with: Hamster, Zebrafish 
Immunogen	Recombinant full length protein. This information is proprietary to Abcam and/or its suppliers.
Positive control	WB: Mouse and Rat testis tissue lysates. IHC-P: Mouse and Rat testis tissue sections.
General notes	<p>This product has switched from a hybridoma to recombinant production method on 26 September 2022.</p> <p>This antibody clone is manufactured by Abcam. If you require a custom buffer formulation or conjugation for your experiments, please contact orders@abcam.com.</p> <p>This product is a recombinant monoclonal antibody, which offers several advantages including:</p> <ul style="list-style-type: none">- High batch-to-batch consistency and reproducibility- Improved sensitivity and specificity- Long-term security of supply- Animal-free production <p>For more information see here.</p>

Properties

Form	Liquid
Storage instructions	Shipped at 4°C. Store at +4°C short term (1-2 weeks). Upon delivery aliquot. Store at -20°C long term. Avoid freeze / thaw cycle.
Storage buffer	pH: 7.20 Preservative: 0.01% Sodium azide Constituents: 59% PBS, 40% Glycerol (glycerin, glycerine), 0.05% BSA
Purity	Protein A purified
Clonality	Monoclonal

Clone number	Cor 10G11/7
Myeloma	Sp2/0-Ag14
Isotype	IgG1
Light chain type	kappa

Applications

The Abpromise guarantee Our **Abpromise guarantee** covers the use of ab97672 in the following tested applications.

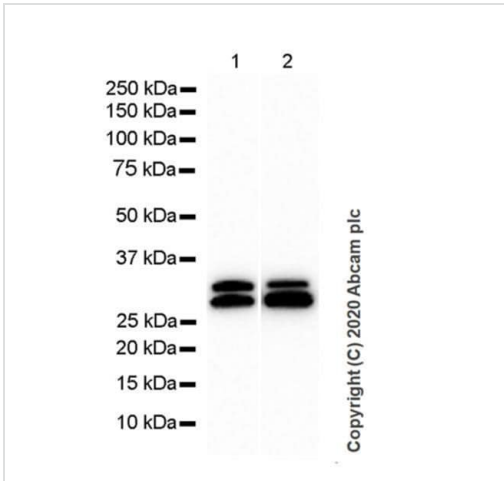
The application notes include recommended starting dilutions; optimal dilutions/concentrations should be determined by the end user.

Application	Abreviews	Notes
IHC-P	★★★★★ (3)	1/4000. Perform heat mediated antigen retrieval with citrate buffer pH 6 before commencing with IHC staining protocol.
WB		1/1000. Predicted molecular weight: 28 kDa.

Target

Function	Component of the transverse filaments of synaptonemal complexes (SCS), formed between homologous chromosomes during meiotic prophase. Has an essential meiotic function in spermatogenesis. May be important for testis development.
Tissue specificity	Testis-specific.
Involvement in disease	Defects in SYCP3 are a cause of azoospermia due to perturbations of meiosis (AZSPM) [MIM:270960]. AZSPM is a condition of having no sperm present in the ejaculate. Testicular histology shows arrest of spermatogenesis at the pachytene stage of primary spermatocytes.
Sequence similarities	Belongs to the XLR/SYCP3 family.
Cellular localization	Nucleus. In tripartite segments of synaptonemal complexes, irrespective of whether these are synapsed or unsynapsed.

Images



Western blot - Anti-SCP3 antibody [Cor 10G11/7] (ab97672)

All lanes : Anti-SCP3 antibody [Cor 10G11/7] (ab97672) at 1/1000 dilution

Lane 1 : Rat testis tissue lysate

Lane 2 : Mouse testis tissue lysate

Lysates/proteins at 20 µg per lane.

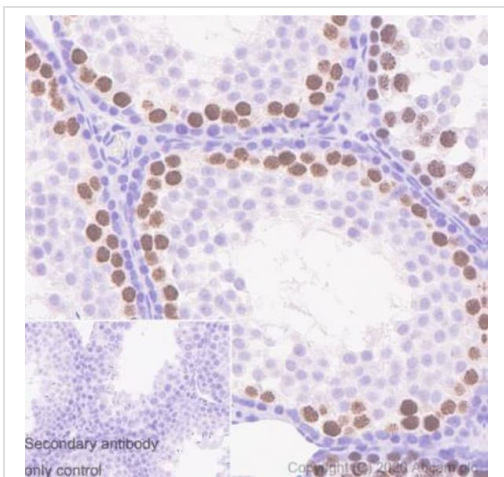
Developed using the ECL technique.

Predicted band size: 28 kDa

Observed band size: 27 kDa

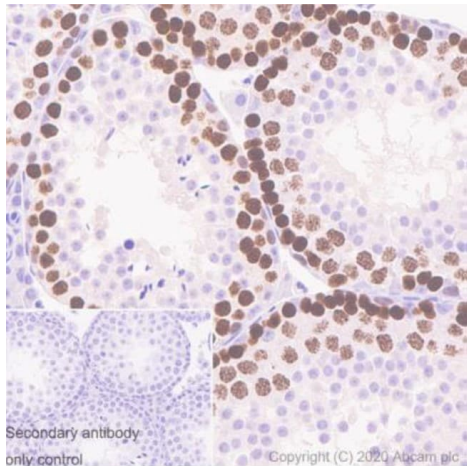
Exposure time: 20 seconds

Blocking and diluting buffer: 5% NFD/MTBST



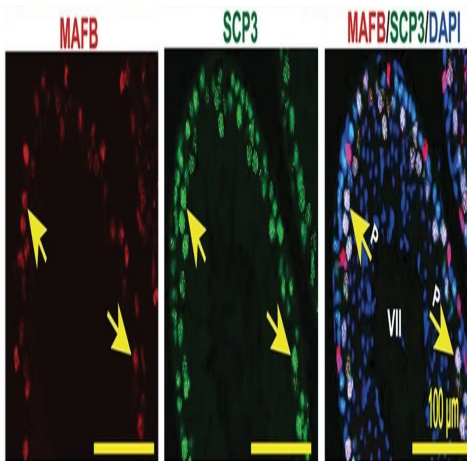
Immunohistochemistry (Formalin/PFA-fixed paraffin-embedded sections) - Anti-SCP3 antibody [Cor 10G11/7] (ab97672)

Immunohistochemical analysis of paraffin-embedded rat testis tissue labeling SCP3 with ab97672 at 1/4000 dilution followed by Leica DS9800 (Bond™ Polymer Refine Detection). The section was incubated with ab97672 for 30 mins at room temperature and blocking mouse IgG by specific antibody ([ab125913](#), 1:1000) for 8 mins. The immunostaining was performed on a Leica Biosystems BOND® RX instrument. Counterstained with hematoxylin.



Immunohistochemistry (Formalin/PFA-fixed paraffin-embedded sections) - Anti-SCP3 antibody [Cor 10G11/7] (ab97672)

Immunohistochemical analysis of paraffin-embedded mouse testis tissue labeling SCP3 with ab97672 at 1/4000 dilution followed by Leica DS9800 (Bond™ Polymer Refine Detection). The section was incubated with ab97672 for 30 mins at room temperature and blocking mouse IgG by specific antibody (**ab125913**, 1:1000) for 8 mins. The immunostaining was performed on a Leica Biosystems BOND® RX instrument. Counterstained with hematoxylin.



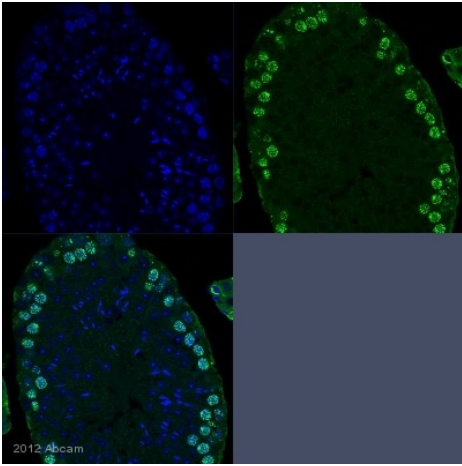
Immunohistochemistry (Formalin/PFA-fixed paraffin-embedded sections) - Anti-SCP3 antibody [Cor 10G11/7] (ab97672)

Shawki et al PLoS One. 2018 Jan 11;13(1):e0190800. doi: 10.1371/journal.pone.0190800. eCollection 2018. Fig 2. Reproduced under the Creative Commons license <http://creativecommons.org/licenses/by/4.0/>

This image was generated from a previous batch made using the hybridoma production method.

Localization of MAFB in adult mouse testis.

Double immunostaining of MAFB with SCP3 (ab97672 at a 1/400 dilution, O/N +4°C). Nuclei were counterstained with DAPI. The color of each marker is indicated above the images. All seminiferous tubules shown represent stage VII. US; undifferentiated spermatogonia. DS; differentiated spermatogonia. P; pachytene spermatocytes. Sp; spermatids. S; Sertoli cells. L; Leydig cells. MAFB was specifically detected in Leydig cells, Sertoli cells, and pachytene spermatocytes.



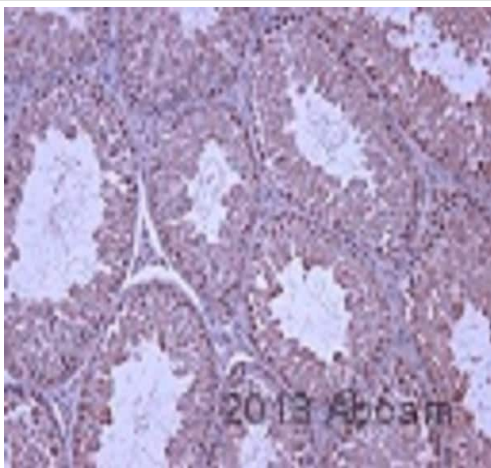
Immunohistochemistry (Formalin/PFA-fixed paraffin-embedded sections) - Anti-SCP3 antibody [Cor 10G11/7] (ab97672)

This image is courtesy of an abreview by Zachary Yu-Ching Lin.

This image was generated from a previous batch made using the hybridoma production method.

IHC-P image of SCP3 staining with ab97672 on tissue sections from adult mouse testis.

The sections were subjected to heat-mediated antigen retrieval using Dako antigen retrieval solution. The sections were then blocked with 5% milk for 30 minutes at 25°C, before incubation with ab97672 (1/200 dilution) for 16 hours at 4°C. The secondary was an Alexa-Fluor®488 conjugated goat anti-mouse polyclonal, used at a 1/500 dilution.



Immunohistochemistry (Formalin/PFA-fixed paraffin-embedded sections) - Anti-SCP3 antibody [Cor 10G11/7] (ab97672)

This image is courtesy of an Abreview submitted by Qin Wen

This image was generated from a previous batch made using the hybridoma production method.

ab97672 staining SCP3 in mouse adult testis tissue sections by Immunohistochemistry (IHC-P - paraformaldehyde-fixed, paraffin-embedded sections).

Tissue was fixed with 4% paraformaldehyde and blocked with 5% BSA for 60 minutes at 25°C; antigen retrieval was by heat mediation in a 0.01M citrate buffer. Samples were incubated with primary antibody (1/200 in 1% BSA) for 1 hour at 22°C. A Biotin-conjugated Goat anti-mouse IgG polyclonal (1/200) was used as the secondary antibody.

Please note: All products are "FOR RESEARCH USE ONLY. NOT FOR USE IN DIAGNOSTIC PROCEDURES"

Our Abpromise to you: Quality guaranteed and expert technical support

- Replacement or refund for products not performing as stated on the datasheet
- Valid for 12 months from date of delivery
- Response to your inquiry within 24 hours
- We provide support in Chinese, English, French, German, Japanese and Spanish

- Extensive multi-media technical resources to help you
- We investigate all quality concerns to ensure our products perform to the highest standards

If the product does not perform as described on this datasheet, we will offer a refund or replacement. For full details of the Abpromise, please visit <https://www.abcam.com/abpromise> or contact our technical team.

Terms and conditions

- Guarantee only valid for products bought direct from Abcam or one of our authorized distributors