

Anti-SCUBE3 antibody ab189955

[1 References](#) [3 Images](#)

Overview

Product name	Anti-SCUBE3 antibody
Description	Rabbit polyclonal to SCUBE3
Host species	Rabbit
Tested applications	Suitable for: WB, IHC-P
Species reactivity	Reacts with: Mouse, Human
Immunogen	Synthetic peptide within Human SCUBE3 (internal sequence). The exact sequence is proprietary. 15 amino acid peptide Database link: Q8IX30

General notes

The Life Science industry has been in the grips of a reproducibility crisis for a number of years. Abcam is leading the way in addressing this with our range of recombinant monoclonal antibodies and knockout edited cell lines for gold-standard validation. Please check that this product meets your needs before purchasing.

If you have any questions, special requirements or concerns, please send us an inquiry and/or contact our Support team ahead of purchase. Recommended alternatives for this product can be found below, along with publications, customer reviews and Q&As

Properties

Form	Liquid
Storage instructions	Shipped at 4°C. Store at +4°C short term (1-2 weeks). Upon delivery aliquot. Store at -20°C long term. Avoid freeze / thaw cycle.
Storage buffer	pH: 7.4 Preservative: 0.02% Sodium azide Constituent: 99% PBS
Purity	Immunogen affinity purified
Clonality	Polyclonal
Isotype	IgG

Applications

The Abpromise guarantee

Our **Abpromise guarantee** covers the use of ab189955 in the following tested applications.

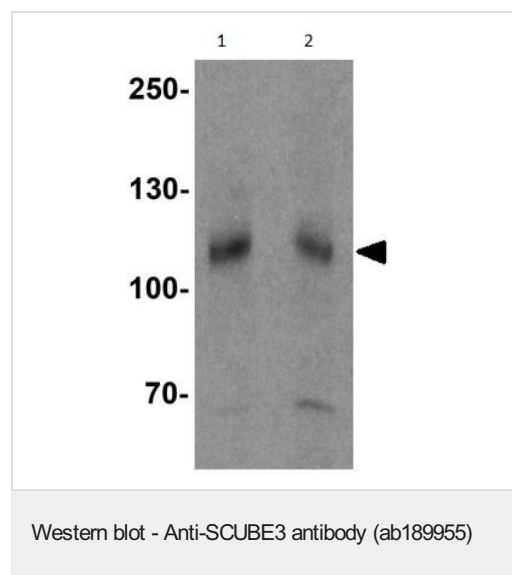
The application notes include recommended starting dilutions; optimal dilutions/concentrations should be determined by the end user.

Application	Abreviews	Notes
WB		Use a concentration of 1 - 2 µg/ml. Predicted molecular weight: 109 kDa.
IHC-P		Use a concentration of 5 µg/ml. Perform heat mediated antigen retrieval with citrate buffer pH 6 before commencing with IHC staining protocol.

Target

Tissue specificity	Highly expressed in osteoblasts. Expression is low or absent in non-bone tissues.
Sequence similarities	Contains 1 CUB domain. Contains 9 EGF-like domains.
Post-translational modifications	N-glycosylated. May undergo proteolytic cleavage in the C-terminal region.
Cellular localization	Secreted. Cell surface.

Images

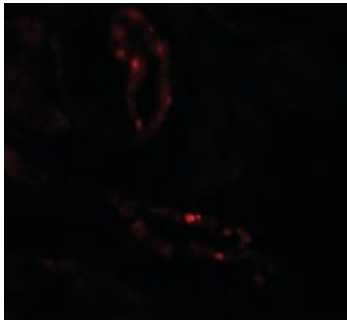


Lane 1 : Anti-SCUBE3 antibody (ab189955) at 1 µg/ml

Lane 2 : Anti-SCUBE3 antibody (ab189955) at 2 µg/ml

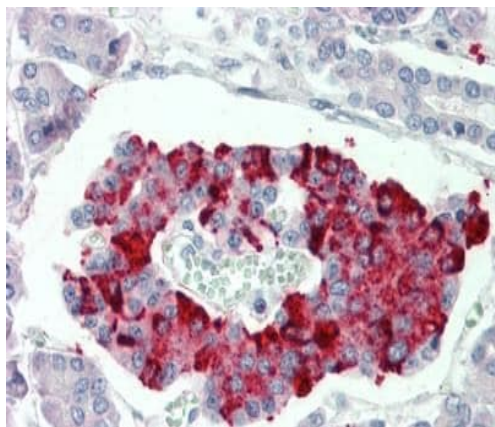
All lanes : Mouse kidney tissue lysate

Predicted band size: 109 kDa



Immunofluorescence staining of Human kidney tissue, labeling SCUBE3 using ab189955 at 20 ug/ml.

Immunohistochemistry (Formalin/PFA-fixed paraffin-embedded sections) - Anti-SCUBE3 antibody (ab189955)



Immunohistochemical analysis of formalin-fixed, paraffin-embedded Human pancreas tissue labeling SCUBE3 using ab189955 at 5 µg/ml

Immunohistochemistry (Formalin/PFA-fixed paraffin-embedded sections) - Anti-SCUBE3 antibody (ab189955)

Please note: All products are "FOR RESEARCH USE ONLY. NOT FOR USE IN DIAGNOSTIC PROCEDURES"

Our Abpromise to you: Quality guaranteed and expert technical support

- Replacement or refund for products not performing as stated on the datasheet
- Valid for 12 months from date of delivery
- Response to your inquiry within 24 hours
- We provide support in Chinese, English, French, German, Japanese and Spanish
- Extensive multi-media technical resources to help you
- We investigate all quality concerns to ensure our products perform to the highest standards

If the product does not perform as described on this datasheet, we will offer a refund or replacement. For full details of the Abpromise, please visit <https://www.abcam.com/abpromise> or contact our technical team.

Terms and conditions

- Guarantee only valid for products bought direct from Abcam or one of our authorized distributors