




## Product datasheet

### Anti-SDF2L1 antibody ab231797

6 Images

#### Overview

<b>Product name</b>	Anti-SDF2L1 antibody
<b>Description</b>	Rabbit polyclonal to SDF2L1
<b>Host species</b>	Rabbit
<b>Tested applications</b>	<b>Suitable for:</b> WB, IHC-P
<b>Species reactivity</b>	<b>Reacts with:</b> Mouse <b>Predicted to work with:</b> Human 
<b>Immunogen</b>	Recombinant fragment (His-T7-tag) corresponding to Mouse SDF2L1 aa 1 to the C-terminus. (Expressed in E.coli). Database link: <a href="#">Q9ESP1</a>  <a href="#">Run BLAST with</a>  <a href="#">Run BLAST with</a>
<b>Positive control</b>	IHC-P: Mouse testis tissue. WB: Mouse pancreas, testis and stomach lysates; Recombinant mouse SDF2L1 protein.
<b>General notes</b>	<p>The Life Science industry has been in the grips of a reproducibility crisis for a number of years. Abcam is leading the way in addressing this with our range of recombinant monoclonal antibodies and knockout edited cell lines for gold-standard validation. Please check that this product meets your needs before purchasing.</p> <p>If you have any questions, special requirements or concerns, please send us an inquiry and/or contact our Support team ahead of purchase. Recommended alternatives for this product can be found below, along with publications, customer reviews and Q&amp;As</p>

#### Properties

<b>Form</b>	Liquid
<b>Storage instructions</b>	Shipped at 4°C. Store at +4°C short term (1-2 weeks). Upon delivery aliquot. Store at -20°C long term. Avoid freeze / thaw cycle.
<b>Storage buffer</b>	pH: 7.40 Preservative: 0.011% Proclin 300 Constituents: 55.77% Glycerol (glycerin, glycerine), 44.219% PBS
<b>Purity</b>	Immunogen affinity purified
<b>Purification notes</b>	ab231797 was purified by antigen-specific affinity chromatography followed by Protein A affinity chromatography.

<b>Clonality</b>	Polyclonal
<b>Isotype</b>	IgG

## Applications

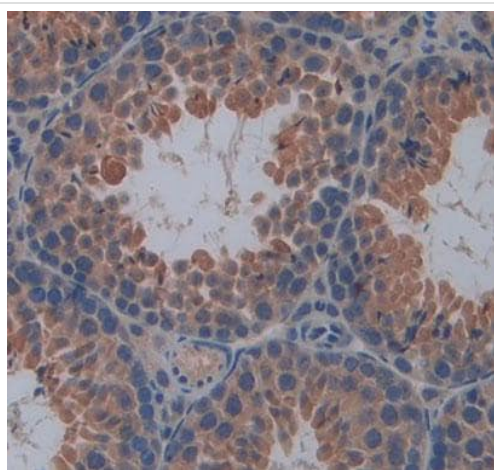
**The Abpromise guarantee** Our **Abpromise guarantee** covers the use of ab231797 in the following tested applications. The application notes include recommended starting dilutions; optimal dilutions/concentrations should be determined by the end user.

Application	Abreviews	Notes
<b>WB</b>		Use a concentration of 0.2 - 2 µg/ml. Predicted molecular weight: 24 kDa.
<b>IHC-P</b>		Use a concentration of 5 - 20 µg/ml.

## Target

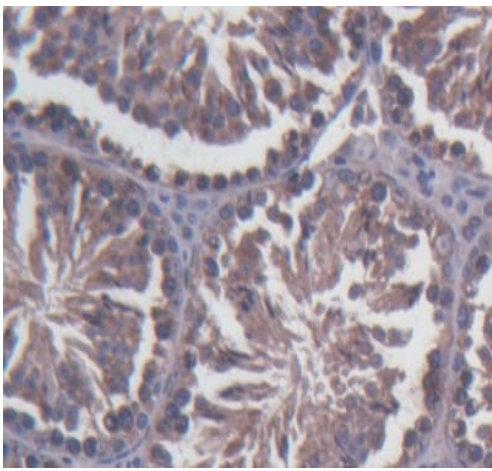
<b>Tissue specificity</b>	Ubiquitously expressed with high expression in testis, moderate expression in the pancreas, spleen, prostate, small intestine and colon. Very low expression is seen in brain and skeletal muscle.
<b>Sequence similarities</b>	Contains 3 MIR domains.
<b>Cellular localization</b>	Endoplasmic reticulum lumen.

## Images



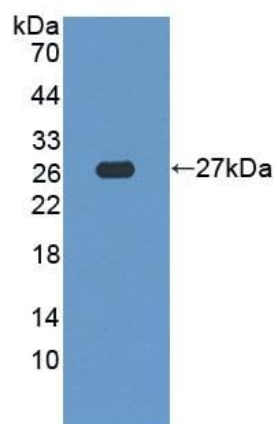
Formalin-fixed, paraffin-embedded mouse testis tissue stained for SDF2L1 using ab231797 at 20 µg/ml in immunohistochemical analysis. DAB staining.

Immunohistochemistry (Formalin/PFA-fixed paraffin-embedded sections) - Anti-SDF2L1 antibody (ab231797)



Immunohistochemistry (Formalin/PFA-fixed paraffin-embedded sections) - Anti-SDF2L1 antibody (ab231797)

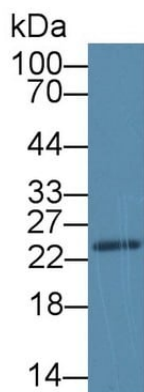
Formalin-fixed, paraffin-embedded mouse testis tissue stained for SDF2L1 using ab231797 at 20 µg/ml in immunohistochemical analysis. DAB staining.



Western blot - Anti-SDF2L1 antibody (ab231797)

Anti-SDF2L1 antibody (ab231797) at 2 µg/ml + Recombinant mouse SDF2L1 protein

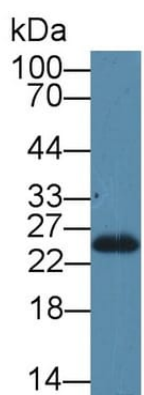
**Predicted band size:** 24 kDa



Western blot - Anti-SDF2L1 antibody (ab231797)

Anti-SDF2L1 antibody (ab231797) at 1 µg/ml + Mouse pancreas lysate

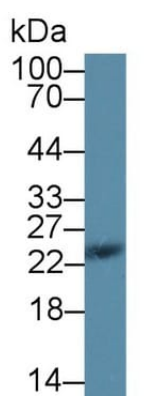
**Predicted band size:** 24 kDa



Western blot - Anti-SDF2L1 antibody (ab231797)

Anti-SDF2L1 antibody (ab231797) at 1 µg/ml + Mouse testis lysate

**Predicted band size:** 24 kDa



Western blot - Anti-SDF2L1 antibody (ab231797)

Anti-SDF2L1 antibody (ab231797) at 1 µg/ml + Mouse stomach lysate

**Predicted band size:** 24 kDa

**Please note:** All products are "FOR RESEARCH USE ONLY. NOT FOR USE IN DIAGNOSTIC PROCEDURES"

## **Our Abpromise to you: Quality guaranteed and expert technical support**

---

- Replacement or refund for products not performing as stated on the datasheet
- Valid for 12 months from date of delivery
- Response to your inquiry within 24 hours
  
- We provide support in Chinese, English, French, German, Japanese and Spanish
- Extensive multi-media technical resources to help you
- We investigate all quality concerns to ensure our products perform to the highest standards

If the product does not perform as described on this datasheet, we will offer a refund or replacement. For full details of the Abpromise, please visit [\*\*https://www.abcam.com/abpromise\*\*](https://www.abcam.com/abpromise) or contact our technical team.

## **Terms and conditions**

---

- Guarantee only valid for products bought direct from Abcam or one of our authorized distributors