

Product datasheet

Anti-SDF4 antibody ab154283

[2 Images](#)

Overview

Product name	Anti-SDF4 antibody
Description	Rabbit polyclonal to SDF4
Host species	Rabbit
Tested applications	Suitable for: WB, IHC-P
Species reactivity	Reacts with: Human
Immunogen	Recombinant fragment corresponding to a region within amino acids 1 and 228 of Human SDF4 (Uniprot ID Q9BRK5).
Positive control	U-87 MG and U87 xenograft.
General notes	<p>The Life Science industry has been in the grips of a reproducibility crisis for a number of years. Abcam is leading the way in addressing this with our range of recombinant monoclonal antibodies and knockout edited cell lines for gold-standard validation. Please check that this product meets your needs before purchasing.</p> <p>If you have any questions, special requirements or concerns, please send us an inquiry and/or contact our Support team ahead of purchase. Recommended alternatives for this product can be found below, along with publications, customer reviews and Q&As</p>

Properties

Form	Liquid
Storage instructions	Shipped at 4°C. Upon delivery aliquot and store at -20°C or -80°C. Avoid repeated freeze / thaw cycles.
Storage buffer	pH: 7.00 Preservative: 0.01% Thimerosal (merthiolate) Constituents: 1.21% Tris, 0.75% Glycine, 20% Glycerol (glycerin, glycerine)
Purity	Immunogen affinity purified
Clonality	Polyclonal
Isotype	IgG

Applications

The Abpromise guarantee

Our **Abpromise guarantee** covers the use of ab154283 in the following tested applications.

The application notes include recommended starting dilutions; optimal dilutions/concentrations should be determined by the end user.

Application	Abreviews	Notes
WB		1/500 - 1/3000. Predicted molecular weight: 42 kDa.
IHC-P		1/100 - 1/1000.

Target

Function

May regulate calcium-dependent activities in the endoplasmic reticulum lumen or post-ER compartment.

Isoform 5 may be involved in the exocytosis of zymogens by pancreatic acini.

Tissue specificity

Ubiquitous. Isoform 5 is expressed in pancreas.

Sequence similarities

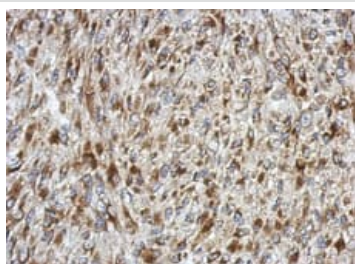
Belongs to the CREC family.

Contains 6 EF-hand domains.

Cellular localization

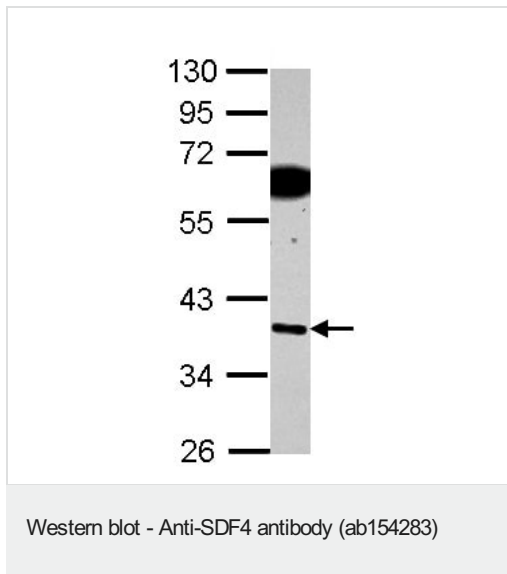
Golgi apparatus lumen and Cytoplasm. Cell projection > bleb. Isoform 5 colocalizes with STX3 and STXBP1 isoform 2 at the plasma membrane and cell surface blebs.

Images



Immunohistochemical analysis of formalin-fixed, paraffin-embedded U87 xenograft labeling SDF4 with ab154283 at 1/500.

Immunohistochemistry (Formalin/PFA-fixed paraffin-embedded sections) - Anti-SDF4 antibody (ab154283)



Anti-SDF4 antibody (ab154283) at 1/1000 dilution + U-87 MG whole cell lysate at 30 μ g

Predicted band size: 42 kDa

Please note: All products are "FOR RESEARCH USE ONLY. NOT FOR USE IN DIAGNOSTIC PROCEDURES"

Our Abpromise to you: Quality guaranteed and expert technical support

- Replacement or refund for products not performing as stated on the datasheet
- Valid for 12 months from date of delivery
- Response to your inquiry within 24 hours
- We provide support in Chinese, English, French, German, Japanese and Spanish
- Extensive multi-media technical resources to help you
- We investigate all quality concerns to ensure our products perform to the highest standards

If the product does not perform as described on this datasheet, we will offer a refund or replacement. For full details of the Abpromise, please visit <https://www.abcam.com/abpromise> or contact our technical team.

Terms and conditions

- Guarantee only valid for products bought direct from Abcam or one of our authorized distributors