


Anti-SDHA antibody ab137756

[1 References](#) [2 Images](#)

Overview

Product name	Anti-SDHA antibody
Description	Rabbit polyclonal to SDHA
Host species	Rabbit
Tested applications	Suitable for: WB
Species reactivity	Reacts with: Mouse, Human Predicted to work with: Cow, Drosophila melanogaster 
Immunogen	Recombinant fragment, corresponding to a region within amino acids 12-234 of Human SDHA (UniProt ID: P31040).
Positive control	Molt4, Raji and mouse brain cell lysates
General notes	<p>The Life Science industry has been in the grips of a reproducibility crisis for a number of years. Abcam is leading the way in addressing this with our range of recombinant monoclonal antibodies and knockout edited cell lines for gold-standard validation. Please check that this product meets your needs before purchasing.</p> <p>If you have any questions, special requirements or concerns, please send us an inquiry and/or contact our Support team ahead of purchase. Recommended alternatives for this product can be found below, along with publications, customer reviews and Q&As</p>

Properties

Form	Liquid
Storage instructions	Shipped at 4°C. Upon delivery aliquot and store at -20°C or -80°C. Avoid repeated freeze / thaw cycles.
Storage buffer	pH: 7.00 Preservative: 0.01% Thimerosal (merthiolate) Constituents: 1.21% Tris, 0.75% Glycine, 10% Glycerol (glycerin, glycerine)
Purity	Immunogen affinity purified
Clonality	Polyclonal
Isotype	IgG

Applications

The Abpromise guarantee

Our **Abpromise guarantee** covers the use of ab137756 in the following tested applications.

The application notes include recommended starting dilutions; optimal dilutions/concentrations should be determined by the end user.

Application	Abreviews	Notes
WB		1/500 - 1/3000. Predicted molecular weight: 73 kDa.

Target

Function

Flavoprotein (FP) subunit of succinate dehydrogenase (SDH) that is involved in complex II of the mitochondrial electron transport chain and is responsible for transferring electrons from succinate to ubiquinone (coenzyme Q).

Pathway

Carbohydrate metabolism; tricarboxylic acid cycle; fumarate from succinate (eukaryal route): step 1/1.

Involvement in disease

Defects in SDHA are a cause of mitochondrial complex II deficiency (MT-C2D) [MIM:252011]. A disorder of the mitochondrial respiratory chain with heterogeneous clinical manifestations. Clinical features include psychomotor regression in infants, poor growth with lack of speech development, severe spastic quadriplegia, dystonia, progressive leukoencephalopathy, muscle weakness, exercise intolerance, cardiomyopathy. Some patients manifest Leigh syndrome or Kearns-Sayre syndrome.

Defects in SDHA are a cause of Leigh syndrome (LS) [MIM:256000]. LS is a severe disorder characterized by bilaterally symmetrical necrotic lesions in subcortical brain regions.

Defects in SDHA are the cause of cardiomyopathy dilated type 1GG (CMD1GG) [MIM:613642]. CMD1GG is a disorder characterized by ventricular dilation and impaired systolic function, resulting in congestive heart failure and arrhythmia. Patients are at risk of premature death.

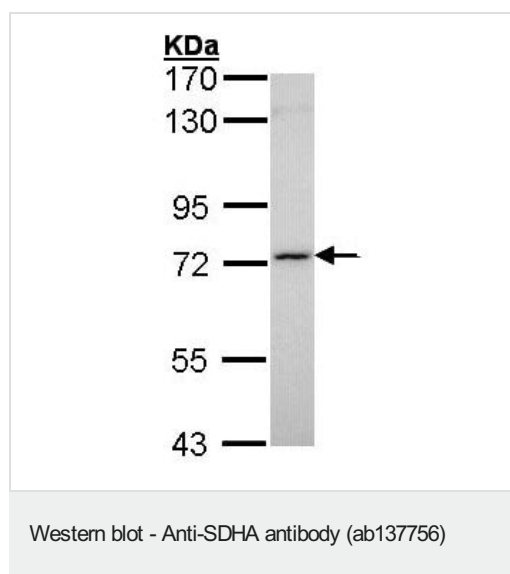
Sequence similarities

Belongs to the FAD-dependent oxidoreductase 2 family. FRD/SDH subfamily.

Cellular localization

Mitochondrion inner membrane.

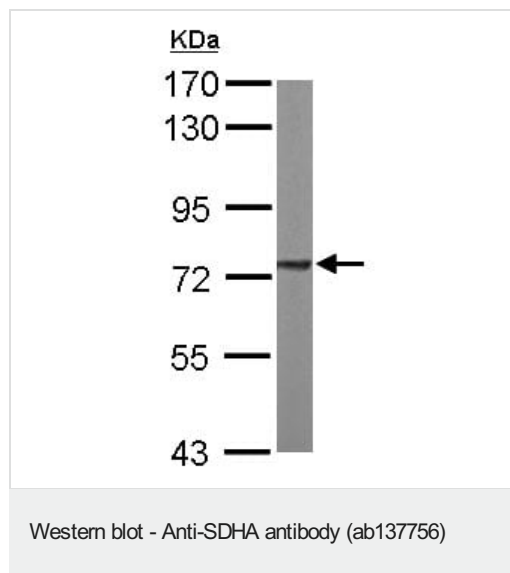
Images



Anti-SDHA antibody (ab137756) at 1/1000 dilution + Molt4 cell lysate at 30 µg

Predicted band size: 73 kDa

7.5% SDS PAGE



Anti-SDHA antibody (ab137756) at 1/1000 dilution + mouse brain cell lysate at 50 µg

Predicted band size: 73 kDa

7.5% SDS PAGE

Please note: All products are "FOR RESEARCH USE ONLY. NOT FOR USE IN DIAGNOSTIC PROCEDURES"

Our Abpromise to you: Quality guaranteed and expert technical support

- Replacement or refund for products not performing as stated on the datasheet
- Valid for 12 months from date of delivery
- Response to your inquiry within 24 hours
- We provide support in Chinese, English, French, German, Japanese and Spanish
- Extensive multi-media technical resources to help you
- We investigate all quality concerns to ensure our products perform to the highest standards

If the product does not perform as described on this datasheet, we will offer a refund or replacement. For full details of the Abpromise, please visit <https://www.abcam.com/abpromise> or contact our technical team.

Terms and conditions

- Guarantee only valid for products bought direct from Abcam or one of our authorized distributors