


Anti-SDHAF1 antibody [EPR13380] - BSA and Azide free ab250820

Recombinant RabMAb

3 Images

Overview

| | |
|----------------------------|---|
| Product name | Anti-SDHAF1 antibody [EPR13380] - BSA and Azide free |
| Description | Rabbit monoclonal [EPR13380] to SDHAF1 - BSA and Azide free |
| Host species | Rabbit |
| Tested applications | Suitable for: ICC/IF, WB |
| Species reactivity | <p>Reacts with: Human</p> <p>Predicted to work with: Mouse, Rat </p> |
| Immunogen | Recombinant fragment. This information is proprietary to Abcam and/or its suppliers. |
| General notes | <p>ab250820 is the carrier-free version of ab185222.</p> <p>Our carrier-free antibodies are typically supplied in a PBS-only formulation, purified and free of BSA, sodium azide and glycerol. The carrier-free buffer and high concentration allow for increased conjugation efficiency.</p> <p>This conjugation-ready format is designed for use with fluorochromes, metal isotopes, oligonucleotides, and enzymes, which makes them ideal for antibody labelling, functional and cell-based assays, flow-based assays (e.g. mass cytometry) and Multiplex Imaging applications.</p> <p>Use our conjugation kits for antibody conjugates that are ready-to-use in as little as 20 minutes with <1 minute hands-on-time and 100% antibody recovery: available for fluorescent dyes, HRP, biotin and gold.</p> <p>This product is compatible with the Maxpar[®] Antibody Labeling Kit from Fluidigm, without the need for antibody preparation. Maxpar[®] is a trademark of Fluidigm Canada Inc.</p> <p>This product is a recombinant monoclonal antibody, which offers several advantages including:</p> <ul style="list-style-type: none"> - High batch-to-batch consistency and reproducibility - Improved sensitivity and specificity - Long-term security of supply - Animal-free production <p>For more information see here.</p> <p>Our RabMAb[®] technology is a patented hybridoma-based technology for making rabbit monoclonal antibodies. For details on our patents, please refer to RabMAb[®] patents.</p> |

Properties

| | |
|----------------------|---|
| Form | Liquid |
| Storage instructions | Shipped at 4°C. Store at +4°C. Do Not Freeze. |
| Storage buffer | pH: 7.2 Constituent: PBS |
| Carrier free | Yes |
| Purity | Protein A purified |
| Clonality | Monoclonal |
| Clone number | EPR13380 |
| Isotype | IgG |

Applications

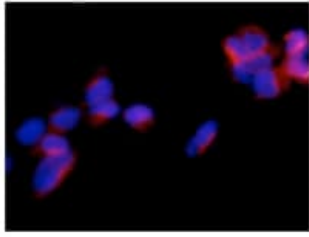
The Abpromise guarantee Our **Abpromise guarantee** covers the use of ab250820 in the following tested applications. The application notes include recommended starting dilutions; optimal dilutions/concentrations should be determined by the end user.

| Application | Abreviews | Notes |
|-------------|-----------|---|
| ICC/IF | | Use at an assay dependent concentration. |
| WB | | Use at an assay dependent concentration. Detects a band of approximately 21 kDa (predicted molecular weight: 13 kDa). This product detects the target protein in mitochondrial lysates (17 kDa). In our hands we are unable to detect the target protein in whole cell lysates. |

Target

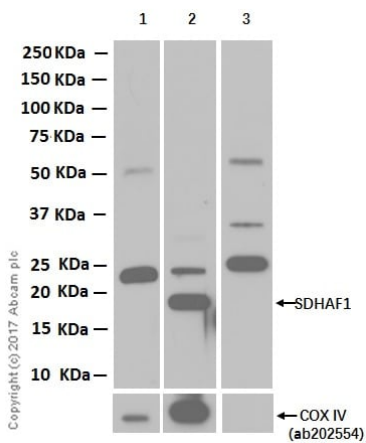
| | |
|------------------------|--|
| Function | Plays an essential role in succinate dehydrogenase complex (SDH) assembly, a complex involved in complex II of the mitochondrial electron transport chain. Probably acts by participating in mitochondrial biosynthesis of iron-sulfur centers for complex II. |
| Tissue specificity | Ubiquitously expressed. |
| Pathway | Cofactor biosynthesis; iron-sulfur cluster biosynthesis. |
| Involvement in disease | Mitochondrial complex II deficiency |
| Sequence similarities | Belongs to the complex I LYR family. SDHAF1 subfamily. |
| Cellular localization | Mitochondrion matrix. |

Images



Immunocytochemistry/ Immunofluorescence - Anti-SDHAF1 antibody [EPR13380] - BSA and Azide free (ab250820)

This data was developed using [ab185222](#), the same antibody clone in a different buffer formulation. Immunofluorescent analysis of 293 cells (4% paraformaldehyde-fixed) labeling SDHAF1 with [ab185222](#) at 1/100 dilution followed by Goat anti rabbit IgG (Alexa Fluor®555) at 1/200 dilution and Counterstained with DAPI (blue).



Western blot - Anti-SDHAF1 antibody [EPR13380] - BSA and Azide free (ab250820)

All lanes : Anti-SDHAF1 antibody [EPR13380] ([ab185222](#)) at 1/1000 dilution

Lane 1 : MCF7 whole cell lysate

Lane 2 : MCF7 mitochondria fraction lysate

Lane 3 : MCF7 mitochondria control lysate

Lysates/proteins at 20 µg per lane.

Secondary

All lanes : Goat Anti-Rabbit IgG H&L (HRP) ([ab97051](#)) at 1/20000 dilution

Predicted band size: 13 kDa

Observed band size: 17 kDa

Exposure time: 3 minutes

This data was developed using [ab185222](#), the same antibody clone in a different buffer formulation.

Blocking and dilution buffer: 5% NFDm/TBST.

Why choose a recombinant antibody?



Research with confidence
Consistent and reproducible results



Long-term and scalable supply
Recombinant technology



Success from the first experiment
Confirmed specificity



Ethical standards compliant
Animal-free production

Anti-SDHAF1 antibody [EPR13380] - BSA and Azide free (ab250820)

Please note: All products are "FOR RESEARCH USE ONLY. NOT FOR USE IN DIAGNOSTIC PROCEDURES"

Our Abpromise to you: Quality guaranteed and expert technical support

- Replacement or refund for products not performing as stated on the datasheet
- Valid for 12 months from date of delivery
- Response to your inquiry within 24 hours
- We provide support in Chinese, English, French, German, Japanese and Spanish
- Extensive multi-media technical resources to help you
- We investigate all quality concerns to ensure our products perform to the highest standards

If the product does not perform as described on this datasheet, we will offer a refund or replacement. For full details of the Abpromise, please visit <https://www.abcam.com/abpromise> or contact our technical team.

Terms and conditions

- Guarantee only valid for products bought direct from Abcam or one of our authorized distributors