

## Product datasheet

# Anti-SDHB antibody ab154974

[1 References](#) [3 Images](#)

### Overview

---

<b>Product name</b>	Anti-SDHB antibody
<b>Description</b>	Rabbit polyclonal to SDHB
<b>Host species</b>	Rabbit
<b>Tested applications</b>	<b>Suitable for:</b> WB, IHC-P
<b>Species reactivity</b>	<b>Reacts with:</b> Mouse, Human
<b>Immunogen</b>	Recombinant fragment, corresponding to a region within amino acids 66-280 of Human SDHB (UniProt P21912).
<b>Positive control</b>	NCI-H929 and mouse brain whole cell lysates; Human MB157 xenograft tissue.
<b>General notes</b>	<p>The Life Science industry has been in the grips of a reproducibility crisis for a number of years. Abcam is leading the way in addressing this with our range of recombinant monoclonal antibodies and knockout edited cell lines for gold-standard validation. Please check that this product meets your needs before purchasing.</p> <p>If you have any questions, special requirements or concerns, please send us an inquiry and/or contact our Support team ahead of purchase. Recommended alternatives for this product can be found below, along with publications, customer reviews and Q&amp;As</p>

### Properties

---

<b>Form</b>	Liquid
<b>Storage instructions</b>	Shipped at 4°C. Upon delivery aliquot. Store at -20°C or -80°C. Avoid freeze / thaw cycle.
<b>Storage buffer</b>	pH: 7.00 Preservative: 0.025% Proclin 300 Constituents: 79% PBS, 20% Glycerol (glycerin, glycerine)
<b>Purity</b>	Immunogen affinity purified
<b>Clonality</b>	Polyclonal
<b>Isotype</b>	IgG

### Applications

---

**The Abpromise guarantee** Our **Abpromise guarantee** covers the use of ab154974 in the following tested applications.

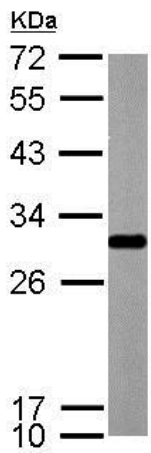
The application notes include recommended starting dilutions; optimal dilutions/concentrations should be determined by the end user.

Application	Abreviews	Notes
WB		1/500 - 1/3000. Predicted molecular weight: 32 kDa.
IHC-P		1/100 - 1/1000. Perform heat mediated antigen retrieval before commencing with IHC staining protocol using 10mM Citrate buffer (pH6.0) or Tris-EDTA buffer (pH8.0).

## Target

<b>Function</b>	Iron-sulfur protein (IP) subunit of succinate dehydrogenase (SDH) that is involved in complex II of the mitochondrial electron transport chain and is responsible for transferring electrons from succinate to ubiquinone (coenzyme Q).
<b>Pathway</b>	Carbohydrate metabolism; tricarboxylic acid cycle; fumarate from succinate (eukaryal route): step 1/1.
<b>Involvement in disease</b>	<p>Defects in SDHB are a cause of susceptibility to pheochromocytoma (PCC) [MIM:171300]. A catecholamine-producing tumor of chromaffin tissue of the adrenal medulla or sympathetic paraganglia. The cardinal symptom, reflecting the increased secretion of epinephrine and norepinephrine, is hypertension, which may be persistent or intermittent.</p> <p>Defects in SDHB are the cause of hereditary paragangliomas type 4 (PGL4) [MIM:115310]; also known as familial non-chromaffin paragangliomas type 4. Paragangliomas refer to rare and mostly benign tumors that arise from any component of the neuroendocrine system. PGL4 is characterized by the development of mostly benign, highly vascular, slow growing tumors in the head and neck. In the head and neck region, the carotid body is the largest of all paraganglia and is also the most common site of the tumors.</p> <p>Defects in SDHB are a cause of paraganglioma and gastric stromal sarcoma (PGGSS) [MIM:606864]; also called Carney-Stratakis syndrome. Gastrointestinal stromal tumors may be sporadic or inherited in an autosomal dominant manner, alone or as a component of a syndrome associated with other tumors, such as in the context of neurofibromatosis type 1 (NF1). Patients have both gastrointestinal stromal tumors and paragangliomas. Susceptibility to the tumors was inherited in an apparently autosomal dominant manner, with incomplete penetrance.</p> <p>Defects in SDHB are a cause of Cowden-like syndrome (CWDLS) [MIM:612359]. Cowden-like syndrome is a cancer predisposition syndrome associated with elevated risk for tumors of the breast, thyroid, kidney and uterus.</p>
<b>Sequence similarities</b>	<p>Belongs to the succinate dehydrogenase/fumarate reductase iron-sulfur protein family.</p> <p>Contains 1 2Fe-2S ferredoxin-type domain.</p> <p>Contains 1 4Fe-4S ferredoxin-type domain.</p>
<b>Cellular localization</b>	Mitochondrion inner membrane.

## Images

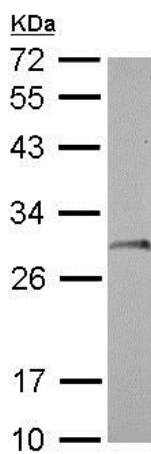


Western blot - Anti-SDHB antibody (ab154974)

Anti-SDHB antibody (ab154974) at 1/1000 dilution + Mouse brain whole cell lysate at 50  $\mu$ g

**Predicted band size:** 32 kDa

12% SDS PAGE

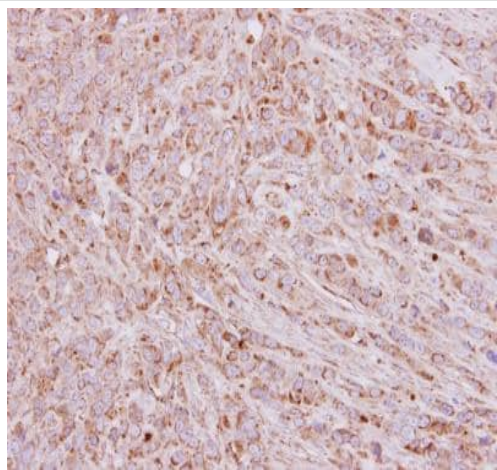


Western blot - Anti-SDHB antibody (ab154974)

Anti-SDHB antibody (ab154974) at 1/1000 dilution + NCI-H929 whole cell lysate at 30  $\mu$ g

**Predicted band size:** 32 kDa

12 % SDS-PAGE



Immunohistochemical analysis of paraffin-embedded Human MB157 xenograft tissue labeling SDHB with ab154974 at 1/250 dilution.

Immunohistochemistry (Formalin/PFA-fixed paraffin-embedded sections) - Anti-SDHB antibody (ab154974)

**Please note:** All products are "FOR RESEARCH USE ONLY. NOT FOR USE IN DIAGNOSTIC PROCEDURES"

#### **Our Abpromise to you: Quality guaranteed and expert technical support**

---

- Replacement or refund for products not performing as stated on the datasheet
- Valid for 12 months from date of delivery
- Response to your inquiry within 24 hours
- We provide support in Chinese, English, French, German, Japanese and Spanish
- Extensive multi-media technical resources to help you
- We investigate all quality concerns to ensure our products perform to the highest standards

If the product does not perform as described on this datasheet, we will offer a refund or replacement. For full details of the Abpromise, please visit <https://www.abcam.com/abpromise> or contact our technical team.

#### **Terms and conditions**

---

- Guarantee only valid for products bought direct from Abcam or one of our authorized distributors