

Product datasheet

Anti-SDHC antibody [EPR11035(B)] ab155999

Recombinant **RabMAb**

[9 References](#) [7 Images](#)

Overview

Product name	Anti-SDHC antibody [EPR11035(B)]
Description	Rabbit monoclonal [EPR11035(B)] to SDHC
Host species	Rabbit
Tested applications	Suitable for: WB, IHC-P Unsuitable for: Flow Cyt, ICC/IF or IP
Species reactivity	Reacts with: Mouse, Rat, Human
Immunogen	Synthetic peptide corresponding to residues in Human SDHC (UniProt Q99643).
Positive control	THP-1, HeLa and fetal liver lysates; Human liver and lung carcinoma tissues; rat liver lysates; THP-1; Mouse brain lysates.
General notes	<p>This product is a recombinant monoclonal antibody, which offers several advantages including:</p> <ul style="list-style-type: none"> - High batch-to-batch consistency and reproducibility - Improved sensitivity and specificity - Long-term security of supply - Animal-free production <p>For more information see here.</p> <p>Our RabMAb[®] technology is a patented hybridoma-based technology for making rabbit monoclonal antibodies. For details on our patents, please refer to RabMAb[®] patents.</p>

Properties

Form	Liquid
Storage instructions	Shipped at 4°C. Store at +4°C short term (1-2 weeks). Upon delivery aliquot. Store at -20°C. Avoid freeze / thaw cycle.
Storage buffer	Preservative: 0.01% Sodium azide Constituents: 40% Glycerol, 0.05% BSA, 59% PBS
Purity	Protein A purified
Clonality	Monoclonal
Clone number	EPR11035(B)
Isotype	IgG

Applications

The Abpromise guarantee

Our **Abpromise guarantee** covers the use of ab155999 in the following tested applications.

The application notes include recommended starting dilutions; optimal dilutions/concentrations should be determined by the end user.

Application	Abreviews	Notes
WB		1/10000. Predicted molecular weight: 19 kDa. For unpurified use at 1/10000 - 1/50000. The mouse and rat recommendation is based on the WB results. This antibody may not be suitable for IHC with mouse or rat samples.
IHC-P		1/700. Perform heat mediated antigen retrieval with Tris/EDTA buffer pH 9.0 before commencing with IHC staining protocol. For unpurified use at 1/250 -1/500.

Application notes

Is unsuitable for Flow Cyt, ICC/IF or IP.

Target

Function

Membrane-anchoring subunit of succinate dehydrogenase (SDH) that is involved in complex II of the mitochondrial electron transport chain and is responsible for transferring electrons from succinate to ubiquinone (coenzyme Q).

Pathway

Carbohydrate metabolism; tricarboxylic acid cycle.

Involvement in disease

Defects in SDHC are the cause of hereditary paragangliomas type 3 (PGL3) [MIM:605373]; also known as autosomal dominant non-chromaffin paragangliomas type 3. Non-chromaffin paragangliomas are usually benign, neural crest derived tumors of parasympathetic ganglia. Defects in SDHC are a cause of paraganglioma and gastric stromal sarcoma (PGSS) [MIM:606864]; also known as Carney-Stratakis syndrome. Gastrointestinal stromal tumors may be sporadic or inherited in an autosomal dominant manner, alone or as a component of a syndrome associated with other tumors, such as in the context of neurofibromatosis type 1 (NF1). Patients have both gastrointestinal stromal tumors and paragangliomas. Susceptibility to the tumors was inherited in an apparently autosomal dominant manner, with incomplete penetrance.

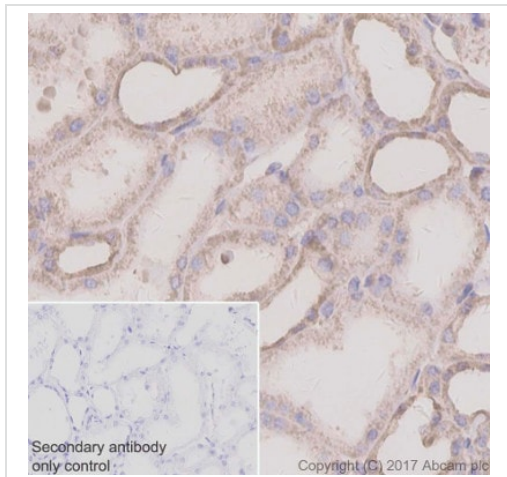
Sequence similarities

Belongs to the cytochrome b560 family.

Cellular localization

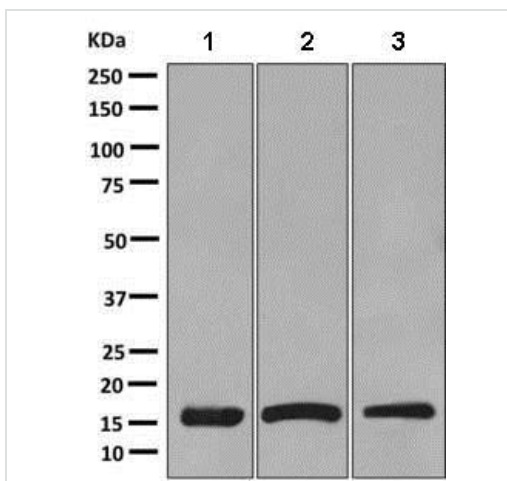
Mitochondrion inner membrane.

Images



Immunohistochemistry (Formalin/PFA-fixed paraffin-embedded sections) - Anti-SDHC antibody [EPR11035(B)] (ab155999)

Immunohistochemistry (Formalin/PFA-fixed paraffin-embedded sections) analysis of Human kidney tissue sections labeling SDHC with purified ab155999 at 1:700 dilution (0.2 µg/ml). Heat mediated antigen retrieval was performed using EDTA Buffer, pH9.0. Tissue was counterstained with Hematoxylin. ImmunoHistoProbe one step HRP Polymer (ready to use) secondary antibody was used at 1:0 dilution. PBS instead of the primary antibody was used as the negative control.



Western blot - Anti-SDHC antibody [EPR11035(B)] (ab155999)

All lanes : Anti-SDHC antibody [EPR11035(B)] (ab155999) at 1/10000 dilution (unpurified)

Lane 1 : THP-1 cell lysate

Lane 2 : HeLa cell lysate

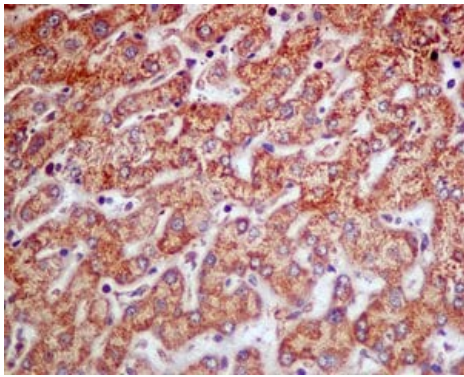
Lane 3 : Fetal liver lysate

Lysates/proteins at 10 µg per lane.

Secondary

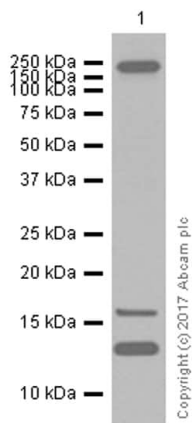
All lanes : HRP labelled goat anti-rabbit at 1/2000 dilution

Predicted band size: 19 kDa



Immunohistochemical analysis of paraffin-embedded Human liver tissue labeling SDHC with unpurified ab155999 at 1/250 dilution.

Immunohistochemistry (Formalin/PFA-fixed paraffin-embedded sections) - Anti-SDHC antibody [EPR11035(B)] (ab155999)



Anti-SDHC antibody [EPR11035(B)] (ab155999) at 1/50000 dilution (purified) + Rat liver lysates at 15 µg

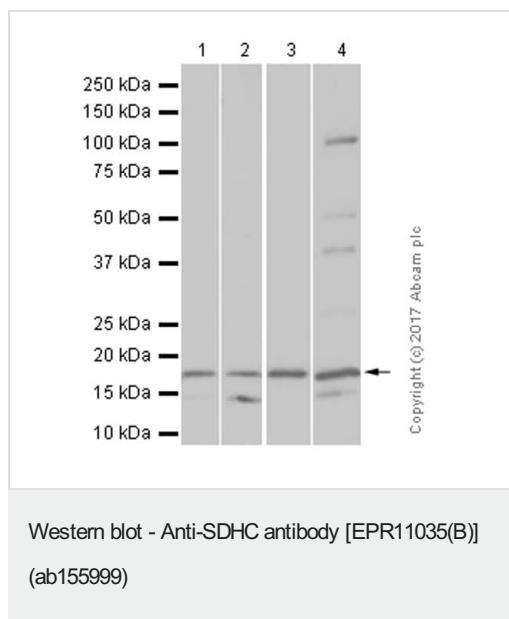
Secondary

Goat Anti-Rabbit IgG H&L (HRP) ([ab97051](#)) at 1/100000 dilution

Predicted band size: 19 kDa

Blocking and diluting buffer: 5% NFDM/TBST

Western blot - Anti-SDHC antibody [EPR11035(B)] (ab155999)



All lanes : Anti-SDHC antibody [EPR11035(B)] (ab155999) at 1/10000 dilution (purified)

Lane 1 : THP-1 (Human monocytic leukemia monocyte) whole cell lysates

Lane 2 : Human fetal liver lysates

Lane 3 : Mouse brain lysates

Lane 4 : Rat brain lysates

Lysates/proteins at 20 µg per lane.

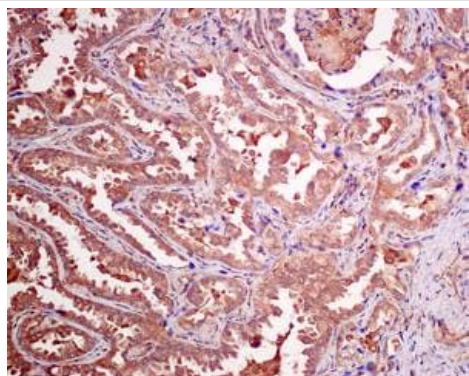
Secondary

All lanes : Anti-Rabbit IgG (HRP), specific to the non-reduced form of IgG at 1/2000 dilution

Predicted band size: 19 kDa

Observed band size: 19 kDa

Blocking and diluting buffer: 5% NFDM/TBST



Immunohistochemical analysis of paraffin-embedded Human lung carcinoma tissue labeling SDHC with unpurified ab155999 at 1/250 dilution.

Immunohistochemistry (Formalin/PFA-fixed paraffin-embedded sections) - Anti-SDHC antibody [EPR11035(B)] (ab155999)

Why choose a recombinant antibody?



Research with confidence
Consistent and reproducible results



Long-term and scalable supply
Recombinant technology



Success from the first experiment
Confirmed specificity



Ethical standards compliant
Animal-free production

Anti-SDHC antibody [EPR11035(B)] (ab155999)

Please note: All products are "FOR RESEARCH USE ONLY. NOT FOR USE IN DIAGNOSTIC PROCEDURES"

Our Abpromise to you: Quality guaranteed and expert technical support

- Replacement or refund for products not performing as stated on the datasheet
- Valid for 12 months from date of delivery
- Response to your inquiry within 24 hours
- We provide support in Chinese, English, French, German, Japanese and Spanish
- Extensive multi-media technical resources to help you
- We investigate all quality concerns to ensure our products perform to the highest standards

If the product does not perform as described on this datasheet, we will offer a refund or replacement. For full details of the Abpromise, please visit <https://www.abcam.com/abpromise> or contact our technical team.

Terms and conditions

- Guarantee only valid for products bought direct from Abcam or one of our authorized distributors