


Product datasheet

Anti-SEC16A/SEC16 antibody ab70722

★★★★★ [6 Abreviews](#) [3 References](#) [2 Images](#)

Overview

Product name	Anti-SEC16A/SEC16 antibody
Description	Rabbit polyclonal to SEC16A/SEC16
Host species	Rabbit
Tested applications	Suitable for: WB, IP
Species reactivity	Reacts with: Human Predicted to work with: Dog, Ferret, Rhesus monkey, Gorilla, Orangutan, Bat 
Immunogen	Synthetic peptide corresponding to Human SEC16A/SEC16. Database link: O15027
Positive control	Whole cell lysate from HeLa and 293T cells.
General notes	<p>The Life Science industry has been in the grips of a reproducibility crisis for a number of years. Abcam is leading the way in addressing this with our range of recombinant monoclonal antibodies and knockout edited cell lines for gold-standard validation. Please check that this product meets your needs before purchasing.</p> <p>If you have any questions, special requirements or concerns, please send us an inquiry and/or contact our Support team ahead of purchase. Recommended alternatives for this product can be found below, along with publications, customer reviews and Q&As</p>

Properties

Form	Liquid
Storage instructions	Shipped at 4°C. Upon delivery aliquot and store at -20°C. Avoid freeze / thaw cycles.
Storage buffer	pH: 6.8 Preservative: 0.09% Sodium azide Constituents: 0.1% BSA, Tris buffered saline
Purity	Immunogen affinity purified
Clonality	Polyclonal
Isotype	IgG

Applications

The Abpromise guarantee

Our **Abpromise guarantee** covers the use of ab70722 in the following tested applications.

The application notes include recommended starting dilutions; optimal dilutions/concentrations should be determined by the end user.

Application	Abreviews	Notes
WB	★★★★★ (4)	1/2000 - 1/10000. Detects a band of approximately >250 kDa (predicted molecular weight: 234 kDa).
IP		Use at 1-4 µg/mg of lysate.

Target

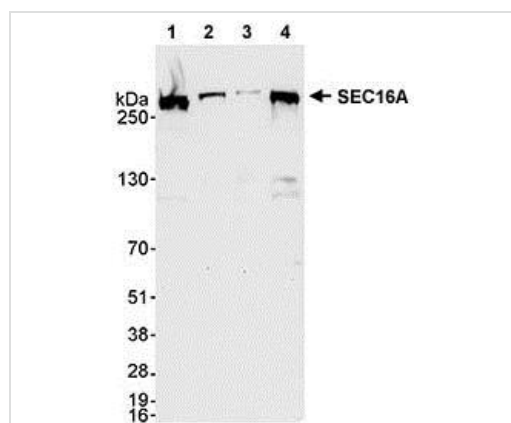
Relevance

SEC16A is required for secretory cargo traffic from the endoplasmic reticulum to the Golgi apparatus. It defines endoplasmic reticulum exit sites (ERES). SAR1A-GTP-dependent assembly of SEC16A on the ER membrane forms an organized scaffold defining an ERES. It is required for normal transitional endoplasmic reticulum (tER) organization.

Cellular localization

Endoplasmic reticulum membrane; Peripheral membrane protein. Golgi apparatus membrane; Peripheral membrane protein. Note=SAR1A activity is required to maintain SEC16A localization at discrete locations on the ER membrane perhaps by preventing its dissociation.

Images



Western blot - Anti-SEC16A/SEC16 antibody
(ab70722)

All lanes : Anti-SEC16A/SEC16 antibody (ab70722) at 0.04 µg/ml

Lane 1 : Whole cell lysate from HeLa cells at 50 µg

Lane 2 : Whole cell lysate from HeLa cells at 15 µg

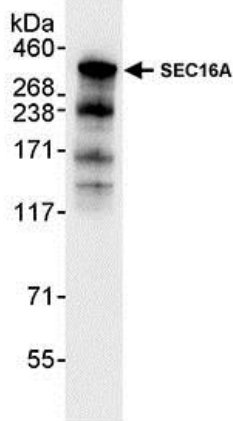
Lane 3 : Whole cell lysate from HeLa cells at 5 µg

Lane 4 : Whole cell lysate from 293T cells at 50 µg

Predicted band size: 234 kDa

Observed band size: >250 kDa

Exposure time: 30 seconds



Immunoprecipitation - Anti-SEC16A/SEC16 antibody
(ab70722)

Detection of Human SEC16A/SEC16 by Immunoprecipitation in Whole cell lysate from HeLa cells (1 mg for IP), using ab70722 at 3 $\mu\text{g}/\text{mg}$ lysate. Subsequent Western blot detection of SEC16A/SEC16 was performed using ab70722 at 0.04 $\mu\text{g}/\text{ml}$.

Please note: All products are "FOR RESEARCH USE ONLY. NOT FOR USE IN DIAGNOSTIC PROCEDURES"

Our Abpromise to you: Quality guaranteed and expert technical support

- Replacement or refund for products not performing as stated on the datasheet
- Valid for 12 months from date of delivery
- Response to your inquiry within 24 hours
- We provide support in Chinese, English, French, German, Japanese and Spanish
- Extensive multi-media technical resources to help you
- We investigate all quality concerns to ensure our products perform to the highest standards

If the product does not perform as described on this datasheet, we will offer a refund or replacement. For full details of the Abpromise, please visit <https://www.abcam.com/abpromise> or contact our technical team.

Terms and conditions

- Guarantee only valid for products bought direct from Abcam or one of our authorized distributors