

## Product datasheet

### Anti-SEC22B antibody [EPR12335] **ab181076**

Recombinant **RabMAb**

[2 References](#) [8 Images](#)

#### Overview

<b>Product name</b>	Anti-SEC22B antibody [EPR12335]
<b>Description</b>	Rabbit monoclonal [EPR12335] to SEC22B
<b>Host species</b>	Rabbit
<b>Specificity</b>	The rat recommendation is based on the WB results. We do not guarantee IHC-P for rat.
<b>Tested applications</b>	<b>Suitable for:</b> Flow Cyt (Intra), WB, ICC/IF, IP <b>Unsuitable for:</b> IHC-P
<b>Species reactivity</b>	<b>Reacts with:</b> Mouse, Rat, Human
<b>Immunogen</b>	Synthetic peptide. This information is proprietary to Abcam and/or its suppliers.
<b>Positive control</b>	WB: Mouse brain, Mouse spleen, Rat spleen, SH-SY5Y cell lysates. ICC/IF: SH-SY5Y cells Flow Cyt (intra): SH-SY5Y cells. IP: SH-SY5Y cells.
<b>General notes</b>	<p>This product is a recombinant monoclonal antibody, which offers several advantages including:</p> <ul style="list-style-type: none"> <li>- High batch-to-batch consistency and reproducibility</li> <li>- Improved sensitivity and specificity</li> <li>- Long-term security of supply</li> <li>- Animal-free production</li> </ul> <p>For more information <a href="#">see here</a>.</p> <p>Our RabMAb<sup>®</sup> technology is a patented hybridoma-based technology for making rabbit monoclonal antibodies. For details on our patents, please refer to <a href="#">RabMAb<sup>®</sup> patents</a>.</p>

#### Properties

<b>Form</b>	Liquid
<b>Storage instructions</b>	Shipped at 4°C. Store at +4°C short term (1-2 weeks). Upon delivery aliquot. Store at -20°C long term. Avoid freeze / thaw cycle.
<b>Storage buffer</b>	Preservative: 0.01% Sodium azide Constituents: PBS, 40% Glycerol (glycerin, glycerine), 0.05% BSA
<b>Purity</b>	Protein A purified
<b>Clonality</b>	Monoclonal
<b>Clone number</b>	EPR12335

## Isotype

IgG

## Applications

### The Abpromise guarantee

Our **Abpromise guarantee** covers the use of ab181076 in the following tested applications.

The application notes include recommended starting dilutions; optimal dilutions/concentrations should be determined by the end user.

Application	Abreviews	Notes
Flow Cyt (Intra)		1/50. <b>ab172730</b> - Rabbit monoclonal IgG, is suitable for use as an isotype control with this antibody.
WB		1/1000 - 1/10000. Detects a band of approximately 28 kDa (predicted molecular weight: 25 kDa).
ICC/IF		1/50 - 1/250.
IP		1/30.

### Application notes

Is unsuitable for IHC-P.

## Target

### Function

SNARE involved in targeting and fusion of ER-derived transport vesicles with the Golgi complex as well as Golgi-derived retrograde transport vesicles with the ER.

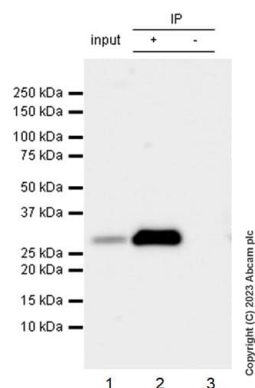
### Sequence similarities

Belongs to the synaptobrevin family.  
Contains 1 longin domain.  
Contains 1 v-SNARE coiled-coil homology domain.

### Cellular localization

Endoplasmic reticulum membrane. Endoplasmic reticulum-Golgi intermediate compartment membrane. Golgi apparatus, cis-Golgi network membrane. Golgi apparatus, trans-Golgi network membrane. Melanosome. Concentrated most in the intermediate compartment/cis-Golgi network and the cis-Golgi cisternae 1 and 2. Greatly reduced in concentration at the trans end of the Golgi apparatus. Identified by mass spectrometry in melanosome fractions from stage I to stage IV.

## Images



Immunoprecipitation - Anti-SEC22B antibody  
[EPR12335] (ab181076)

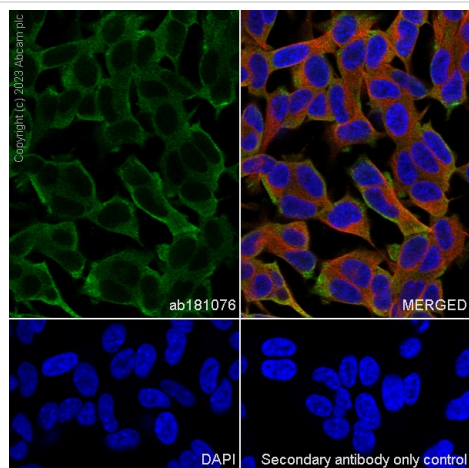
ab181076 at 1/1000 dilution (2ug in 0.35mg lysates)  
immunoprecipitating SEC22B in SH-SY5Y (human neuroblastoma epithelial cell) whole cell lysate.

Lane 1 (input): SH-SY5Y whole cell lysate 10ug

Lane 2 (+): ab181076 & SH-SY5Y whole cell lysate

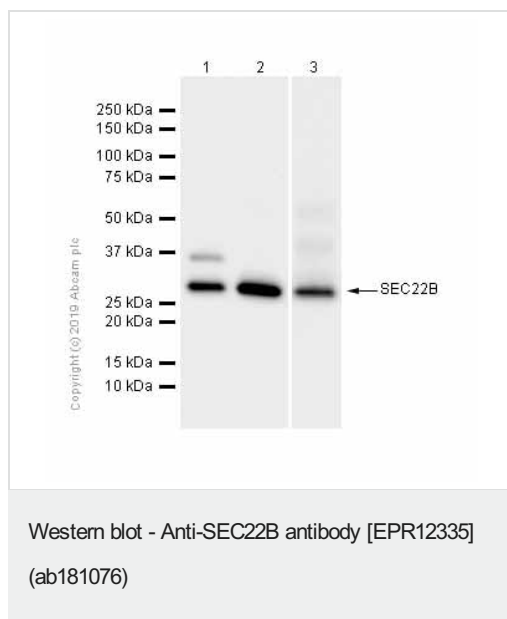
Lane 3 (-): Rabbit monoclonal IgG (**ab172730**) instead of ab181076 in SH-SY5Y whole cell lysate

For western blotting, VeriBlot for IP Detection Reagent (HRP) (**ab131366**) was used at 1/5000 dilution as a secondary antibody. Blocking and diluting buffer: 5% NFDm/TBST.



Immunocytochemistry/ Immunofluorescence - Anti-SEC22B antibody [EPR12335] (ab181076)

Immunocytochemistry/ Immunofluorescence analysis of SH-SY5Y (human neuroblastoma epithelial cell) cells labeling SEC22B with ab181076 at 1/50dilution (10.6 µg/ml). Cells were fixed in 4% Paraformaldehyde and permeabilized with 0.1% tritonX-100. Cells were counterstained with Ab195889 Anti-alpha Tubulin antibody [DM1A] - Microtubule Marker (Alexa Fluor® 594) at 1/200 (2.5 µg/ml). Goat anti rabbit IgG (Alexa Fluor® 488, **ab150081**) was used as the secondary antibody at 1/1000 (2 µg/ml) dilution. DAPI (blue) was used as nuclear counterstain. PBS instead of the primary antibody was used as the secondary antibody only control. Image was taken with a confocal microscope(Leica-Microsystems, TCS SP8).



**All lanes :** Anti-SEC22B antibody [EPR12335] (ab181076) at 1/2000 dilution (Purified)

**Lane 1 :** Mouse brain lysates at 20 µg

**Lane 2 :** Mouse spleen lysates at 20 µg

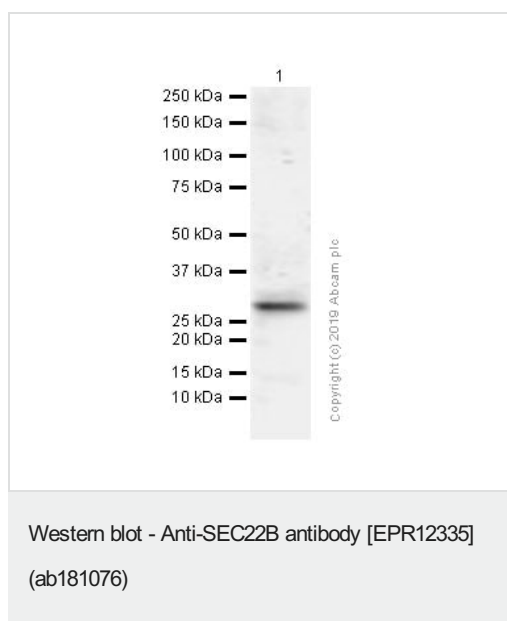
**Lane 3 :** Rat spleen lysates

#### Secondary

**All lanes :** Goat Anti-Rabbit IgG H&L (HRP) ([ab97051](#)) at 1/20000 dilution

**Predicted band size:** 25 kDa

**Observed band size:** 28 kDa



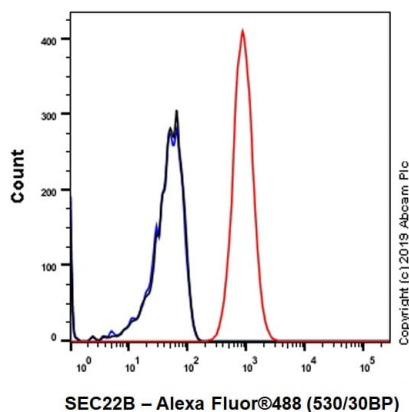
Anti-SEC22B antibody [EPR12335] (ab181076) at 1/1000 dilution (Purified) + SH-SY5Y (Human neuroblastoma epithelial cell) whole cell lysates at 15 µg

#### Secondary

Goat Anti-Rabbit IgG H&L (HRP) ([ab97051](#)) at 1/20000 dilution

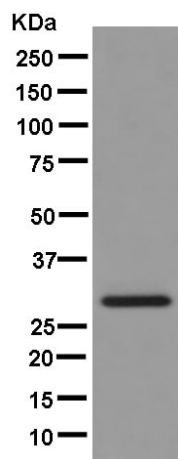
**Predicted band size:** 25 kDa

**Observed band size:** 28 kDa



Flow Cytometry (Intracellular) - Anti-SEC22B antibody [EPR12335] (ab181076)

Intracellular Flow Cytometry analysis of SH-SY5Y (Human neuroblastoma epithelial cell) cells labeling SEC22B with purified ab181076 at 1/50 dilution (10 µg/ml) (Red). Cells were fixed with 4% Paraformaldehyde and permeabilised with 90% Methanol. A Goat anti rabbit IgG (Alexa Fluor® 488, [ab150077](#)) secondary antibody was used at 1/2000. Isotype control - Rabbit monoclonal IgG (Black). Unlabeled control - Cell without incubation with primary antibody and secondary antibody (Blue).



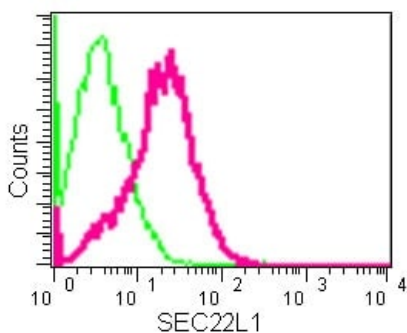
Western blot - Anti-SEC22B antibody [EPR12335] (ab181076)

Anti-SEC22B antibody [EPR12335] (ab181076) at 1/2000 dilution ((unpurified)) + SH-SY5Y cell lysate at 20 µg

#### Secondary

Goat Anti-Rabbit IgG, (H+L), Peroxidase conjugated at 1/1000 dilution

**Predicted band size:** 25 kDa



Intracellular flow cytometric analysis of SH-SY5Y cells (2% paraformaldehyde-fixed) labeling SEC22B with unpurified ab181076 at 1/50 dilution (red) or a rabbit IgG (negative) (green), followed by Goat anti rabbit IgG (FITC) secondary at 1/150 dilution.

Flow Cytometry (Intracellular) - Anti-SEC22B antibody [EPR12335] (ab181076)

#### Why choose a recombinant antibody?



**Research with confidence**  
Consistent and reproducible results



**Long-term and scalable supply**  
Recombinant technology



**Success from the first experiment**  
Confirmed specificity



**Ethical standards compliant**  
Animal-free production

Anti-SEC22B antibody [EPR12335] (ab181076)

**Please note:** All products are "FOR RESEARCH USE ONLY. NOT FOR USE IN DIAGNOSTIC PROCEDURES"

#### Our Abpromise to you: Quality guaranteed and expert technical support

- Replacement or refund for products not performing as stated on the datasheet
- Valid for 12 months from date of delivery
- Response to your inquiry within 24 hours
- We provide support in Chinese, English, French, German, Japanese and Spanish
- Extensive multi-media technical resources to help you
- We investigate all quality concerns to ensure our products perform to the highest standards

If the product does not perform as described on this datasheet, we will offer a refund or replacement. For full details of the Abpromise,

please visit <https://www.abcam.com/abpromise> or contact our technical team.

#### **Terms and conditions**

---

- Guarantee only valid for products bought direct from Abcam or one of our authorized distributors