




Product datasheet

Anti-SEC23A antibody ab99552

★★★★★ [2 Abreviews](#) [2 References](#) [1 Image](#)

Overview

Product name	Anti-SEC23A antibody
Description	Goat polyclonal to SEC23A
Host species	Goat
Tested applications	Suitable for: WB
Species reactivity	Reacts with: Mouse Predicted to work with: Rat, Horse, Cow, Dog, Human 
Immunogen	Synthetic peptide corresponding to Human SEC23A aa 335-346 (internal sequence). Sequence: C-ANRAATTGHVID <div>  Run BLAST with  Run BLAST with </div>
Positive control	NIH 3T3 lysate
General notes	<p>The Life Science industry has been in the grips of a reproducibility crisis for a number of years. Abcam is leading the way in addressing this with our range of recombinant monoclonal antibodies and knockout edited cell lines for gold-standard validation. Please check that this product meets your needs before purchasing.</p> <p>If you have any questions, special requirements or concerns, please send us an inquiry and/or contact our Support team ahead of purchase. Recommended alternatives for this product can be found below, along with publications, customer reviews and Q&As</p>

Properties

Form	Liquid
Storage instructions	Shipped at 4°C. Upon delivery aliquot and store at -20°C. Avoid repeated freeze / thaw cycles.
Storage buffer	pH: 7.30 Preservative: 0.02% Sodium azide Constituents: 0.5% BSA, Tris buffered saline
Purity	Immunogen affinity purified
Purification notes	ab99552 was purified from goat serum by ammonium sulphate precipitation followed by antigen affinity chromatography using the immunizing peptide.
Clonality	Polyclonal

Isotype

IgG

Applications

The Abpromise guarantee

Our **Abpromise guarantee** covers the use of ab99552 in the following tested applications.

The application notes include recommended starting dilutions; optimal dilutions/concentrations should be determined by the end user.

Application	Abreviews	Notes
WB	★ ★ ★ ★ ★ (1)	Use a concentration of 1 - 3 µg/ml. Detects a band of approximately 100 kDa (predicted molecular weight: 86 kDa). 1 hour primary incubation is recommended for this product.

Target

Function

Component of the COPII coat, that covers ER-derived vesicles involved in transport from the endoplasmic reticulum to the Golgi apparatus. COPII acts in the cytoplasm to promote the transport of secretory, plasma membrane, and vacuolar proteins from the endoplasmic reticulum to the Golgi complex.

Involvement in disease

Defects in SEC23A are the cause of cranio-lenticulosutural dysplasia (CLSD) [MIM:607812]; also known as cranio-lenticulo-sutural dysplasia. CLSD is an autosomal recessive syndrome characterized by late-closing fontanels, sutural cataracts, facial dysmorphisms and skeletal defects.

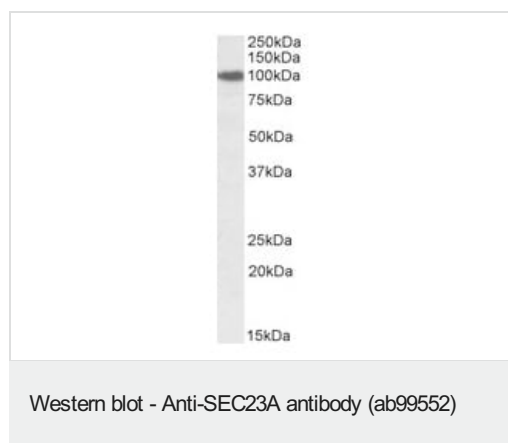
Sequence similarities

Belongs to the SEC23/SEC24 family. SEC23 subfamily.

Cellular localization

Smooth endoplasmic reticulum membrane. Golgi apparatus membrane. In the ribosome-free transitional face of the ER and associated vesicles.

Images



Anti-SEC23A antibody (ab99552) at 2 µg/ml (incubation time 1 hour) + NIH 3T3 cell lysate in RIPA buffer at 35 µg

Developed using the ECL technique.

Predicted band size: 86 kDa

Observed band size: 100 kDa

Please note: All products are "FOR RESEARCH USE ONLY. NOT FOR USE IN DIAGNOSTIC PROCEDURES"

Our Abpromise to you: Quality guaranteed and expert technical support

- Replacement or refund for products not performing as stated on the datasheet
- Valid for 12 months from date of delivery
- Response to your inquiry within 24 hours
- We provide support in Chinese, English, French, German, Japanese and Spanish
- Extensive multi-media technical resources to help you
- We investigate all quality concerns to ensure our products perform to the highest standards

If the product does not perform as described on this datasheet, we will offer a refund or replacement. For full details of the Abpromise, please visit <https://www.abcam.com/abpromise> or contact our technical team.

Terms and conditions

- Guarantee only valid for products bought direct from Abcam or one of our authorized distributors