


Product datasheet

Anti-SEC23IP antibody ab70338

★★★★★ [1 Abreviews](#) [1 References](#) [2 Images](#)

Overview

Product name	Anti-SEC23IP antibody
Description	Rabbit polyclonal to SEC23IP
Host species	Rabbit
Tested applications	Suitable for: IP, WB
Species reactivity	Reacts with: Human Predicted to work with: Chimpanzee, Rhesus monkey, Gorilla, Orangutan 
Immunogen	Synthetic peptide corresponding to a region between residues 1 and 50 of human SEC23IP (NP_009121.1)
Positive control	HeLa and 293T whole cell lysates.
General notes	<p>The Life Science industry has been in the grips of a reproducibility crisis for a number of years. Abcam is leading the way in addressing this with our range of recombinant monoclonal antibodies and knockout edited cell lines for gold-standard validation. Please check that this product meets your needs before purchasing.</p> <p>If you have any questions, special requirements or concerns, please send us an inquiry and/or contact our Support team ahead of purchase. Recommended alternatives for this product can be found below, along with publications, customer reviews and Q&As</p>

Properties

Form	Liquid
Storage instructions	Shipped at 4°C. Upon delivery aliquot and store at -20°C. Avoid freeze / thaw cycles.
Storage buffer	pH: 6.8 Preservative: 0.09% Sodium azide Constituents: 0.1% BSA, Tris buffered saline
Purity	Immunogen affinity purified
Purification notes	ab70338 was affinity purified using an epitope specific to SEC23IP immobilized on solid support.
Clonality	Polyclonal
Isotype	IgG

Applications

Applications

The Abpromise guarantee Our **Abpromise guarantee** covers the use of ab70338 in the following tested applications. The application notes include recommended starting dilutions; optimal dilutions/concentrations should be determined by the end user.

Application	Abreviews	Notes
IP		
WB	★★★★★ (1)	

Application notes

IP: Use at 1-4µg/mg of lysate.
WB: 1/2500 - 1/10000. Detects a band of approximately 125 kDa (predicted molecular weight: 111 kDa).

Not yet tested in other applications.
Optimal dilutions/concentrations should be determined by the end user.

Target

Function

Plays a role in the organization of endoplasmic reticulum exit sites.

Tissue specificity

Ubiquitously expressed with stronger levels detected in heart, liver and skeletal muscle.

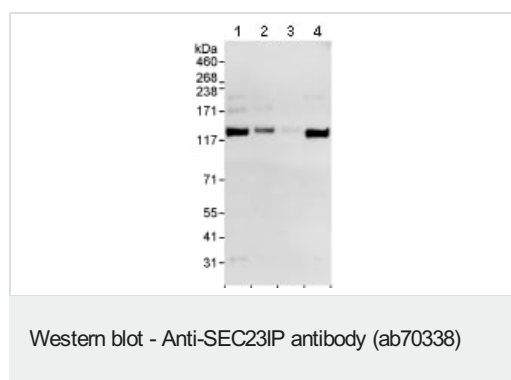
Sequence similarities

Belongs to the PA-PLA1 family.
Contains 1 DDHD domain.
Contains 1 SAM (sterile alpha motif) domain.

Cellular localization

Cytoplasmic vesicle > COPII-coated vesicle membrane. Endoplasmic reticulum.

Images



All lanes : Anti-SEC23IP antibody (ab70338) at 0.04 µg/ml

Lane 1 : HeLa whole cell lysate at 50 µg

Lane 2 : HeLa whole cell lysate at 15 µg

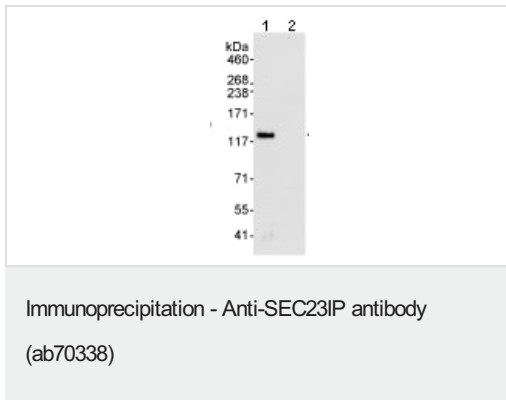
Lane 3 : HeLa whole cell lysate at 5 µg

Lane 4 : 293T whole cell lysate at 50 µg

Predicted band size: 111 kDa

Observed band size: 125 kDa

Exposure time: 30 seconds



Detection of Human SEC23IP by Western Blot of Immunoprecipitate. Lane 1: HeLa whole cell lysates immunoprecipitated using ab70338 at 3µg/mg lysate (1 mg/IP; 20% of IP loaded/lane). Lane 2: control IgG used for immunoprecipitation. All lanes: ab70338 at 1µg/ml. Chemiluminescence with exposure times of 30 seconds

Please note: All products are "FOR RESEARCH USE ONLY. NOT FOR USE IN DIAGNOSTIC PROCEDURES"

Our Abpromise to you: Quality guaranteed and expert technical support

- Replacement or refund for products not performing as stated on the datasheet
- Valid for 12 months from date of delivery
- Response to your inquiry within 24 hours
- We provide support in Chinese, English, French, German, Japanese and Spanish
- Extensive multi-media technical resources to help you
- We investigate all quality concerns to ensure our products perform to the highest standards

If the product does not perform as described on this datasheet, we will offer a refund or replacement. For full details of the Abpromise, please visit <https://www.abcam.com/abpromise> or contact our technical team.

Terms and conditions

- Guarantee only valid for products bought direct from Abcam or one of our authorized distributors