

## Product datasheet

# Anti-Sec24C antibody ab122633

[4 References](#) [3 Images](#)

### Overview

---

<b>Product name</b>	Anti-Sec24C antibody
<b>Description</b>	Rabbit polyclonal to Sec24C
<b>Host species</b>	Rabbit
<b>Tested applications</b>	<b>Suitable for:</b> IHC-P, ICC/IF, WB
<b>Species reactivity</b>	<b>Reacts with:</b> Human
<b>Immunogen</b>	antigen sequence: RLPSMTGPLL PGQSFGGPSV SQPNHVSSPP QALPPGTQMT GPLGPLPPMH SPQQPGYQPQ QNGSFGPARG PQSNYGGPYP AAPTF, corresponding to internal sequence amino acids 222-306 of Human Sec24C. <a href="#">Run BLAST with Expasy</a> <a href="#">Run BLAST with NCBI</a>
<b>Positive control</b>	U 251 MG cells; RT 4, U 251 MG, Human liver and tonsil lysates; Human stomach tissue.
<b>General notes</b>	<p>The Life Science industry has been in the grips of a reproducibility crisis for a number of years. Abcam is leading the way in addressing this with our range of recombinant monoclonal antibodies and knockout edited cell lines for gold-standard validation. Please check that this product meets your needs before purchasing.</p> <p>If you have any questions, special requirements or concerns, please send us an inquiry and/or contact our Support team ahead of purchase. Recommended alternatives for this product can be found below, along with publications, customer reviews and Q&amp;As</p>

### Properties

---

<b>Form</b>	Liquid
<b>Storage instructions</b>	Shipped at 4°C. Store at -20°C or -80°C. Avoid freeze / thaw cycle. Store undiluted.
<b>Storage buffer</b>	pH: 7.20 Preservative: 0.02% Sodium azide Constituents: 59% PBS, 40% Glycerol (glycerin, glycerine)
<b>Purity</b>	Immunogen affinity purified
<b>Clonality</b>	Polyclonal
<b>Isotype</b>	IgG

### Applications

---

## The Abpromise guarantee

Our **Abpromise guarantee** covers the use of ab122633 in the following tested applications.

The application notes include recommended starting dilutions; optimal dilutions/concentrations should be determined by the end user.

Application	Abreviews	Notes
IHC-P		1/500 - 1/1000. Perform heat mediated antigen retrieval with citrate buffer pH 6 before commencing with IHC staining protocol.
ICC/IF		Use a concentration of 0.25 - 2 µg/ml.
WB		Use a concentration of 0.04 - 0.4 µg/ml.

## Target

### Function

Component of the COPII coat, that covers ER-derived vesicles involved in transport from the endoplasmic reticulum to the Golgi apparatus. COPII acts in the cytoplasm to promote the transport of secretory, plasma membrane, and vacuolar proteins from the endoplasmic reticulum to the Golgi complex.

### Tissue specificity

Ubiquitous.

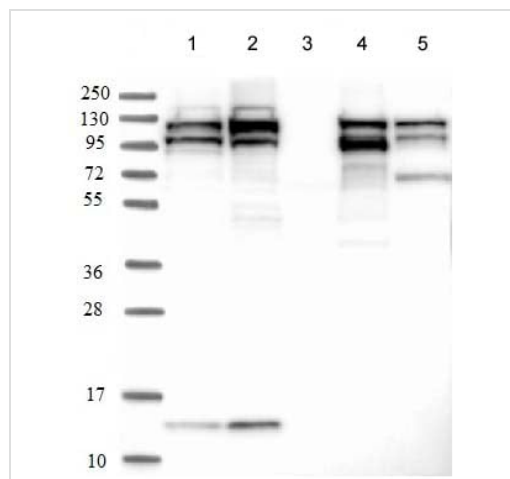
### Sequence similarities

Belongs to the SEC23/SEC24 family. SEC24 subfamily.

### Cellular localization

Cytoplasm. Cytoplasm > perinuclear region. Endoplasmic reticulum membrane. Golgi apparatus membrane.

## Images



Western blot - Anti-Sec24C antibody (ab122633)

**All lanes** : Anti-Sec24C antibody (ab122633) at 1/250 dilution

**Lane 1** : RT 4 lysate

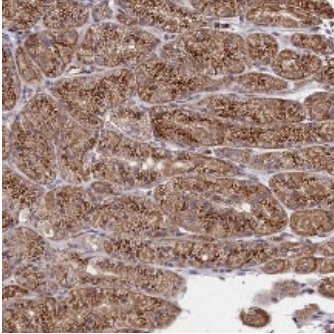
**Lane 2** : U 251 MG lysate

**Lane 3** : Human plasma lysate

**Lane 4** : Human Liver lysate

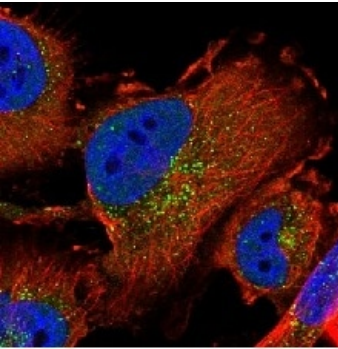
**Lane 5** : Human Tonsil lysate

Developed using the ECL technique.



Immunohistochemistry (Formalin/PFA-fixed paraffin-embedded sections) - Anti-Sec24C antibody (ab122633)

ab122633 at 1/200 dilution staining Sec24C in paraffin-embedded Human stomach tissue by Immunohistochemistry.



Immunocytochemistry/ Immunofluorescence - Anti-Sec24C antibody (ab122633)

ab122633 at 4 µg/ml staining SEC24C in PFA/Triton X-100 fixed/permeabilized U 251 MG cells by Immunofluorescence (green).

**Please note:** All products are "FOR RESEARCH USE ONLY. NOT FOR USE IN DIAGNOSTIC PROCEDURES"

### Our Abpromise to you: Quality guaranteed and expert technical support

---

- Replacement or refund for products not performing as stated on the datasheet
- Valid for 12 months from date of delivery
- Response to your inquiry within 24 hours
- We provide support in Chinese, English, French, German, Japanese and Spanish
- Extensive multi-media technical resources to help you
- We investigate all quality concerns to ensure our products perform to the highest standards

If the product does not perform as described on this datasheet, we will offer a refund or replacement. For full details of the Abpromise, please visit <https://www.abcam.com/abpromise> or contact our technical team.

## Terms and conditions

---

- Guarantee only valid for products bought direct from Abcam or one of our authorized distributors