




### Anti-SEC61A antibody ab1327

[1 References](#) [1 Image](#)

#### Overview

<b>Product name</b>	Anti-SEC61A antibody
<b>Description</b>	Goat polyclonal to SEC61A
<b>Host species</b>	Goat
<b>Tested applications</b>	<b>Suitable for:</b> WB, IHC-P
<b>Species reactivity</b>	<b>Reacts with:</b> Human <b>Predicted to work with:</b> Cow, Dog, Pig 
<b>Immunogen</b>	Synthetic peptide: C-KEQSEVGSMGALLF , corresponding to C terminal amino acids 463-476 of Human SEC61A(Peptide available as <a href="#">ab22804</a> .) <div>  <a href="#">Run BLAST with</a>  <a href="#">Run BLAST with</a> </div>
<b>General notes</b>	<p>The Life Science industry has been in the grips of a reproducibility crisis for a number of years. Abcam is leading the way in addressing this with our range of recombinant monoclonal antibodies and knockout edited cell lines for gold-standard validation. Please check that this product meets your needs before purchasing.</p> <p>If you have any questions, special requirements or concerns, please send us an inquiry and/or contact our Support team ahead of purchase. Recommended alternatives for this product can be found below, along with publications, customer reviews and Q&amp;As</p>

#### Properties

<b>Form</b>	Liquid
<b>Storage instructions</b>	Shipped at 4°C. Upon delivery aliquot and store at -20°C. Avoid repeated freeze / thaw cycles.
<b>Storage buffer</b>	pH: 7.30 Preservative: 0.02% Sodium azide Constituents: 0.05% Tris, 0.5% BSA
<b>Purity</b>	Immunogen affinity purified
<b>Purification notes</b>	Purified from goat serum by ammonium sulphate precipitation followed by antigen affinity chromatography using the immunizing peptide.
<b>Clonality</b>	Polyclonal

Isotype

IgG

## Applications

### The Abpromise guarantee

Our **Abpromise guarantee** covers the use of ab1327 in the following tested applications.

The application notes include recommended starting dilutions; optimal dilutions/concentrations should be determined by the end user.

Application	Abreviews	Notes
WB		Use a concentration of 0.3 - 1 µg/ml. Detects a band of approximately 50 kDa (predicted molecular weight: 52 kDa). 1 hour primary incubation is recommended for this product.
IHC-P		Use a concentration of 3.75 µg/ml.

## Target

### Function

Plays a crucial role in the insertion of secretory and membrane polypeptides into the ER. Required for assembly of membrane and secretory proteins. Tightly associated with membrane-bound ribosomes, either directly or through adapter proteins.

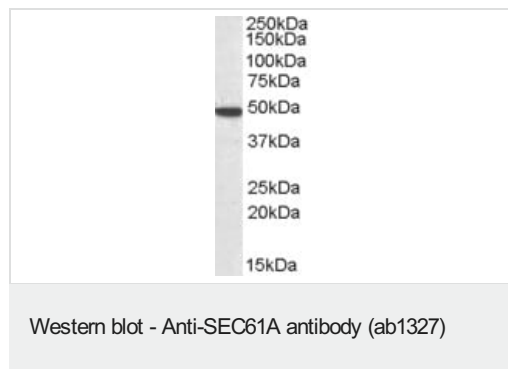
### Sequence similarities

Belongs to the secY/SEC61-alpha family.

### Cellular localization

Endoplasmic reticulum membrane.

## Images



Anti-SEC61A antibody (ab1327) at 1 µg/ml + Human cerebellum lysate in RIPA buffer at 35 µg

**Predicted band size:** 52 kDa

**Please note:** All products are "FOR RESEARCH USE ONLY. NOT FOR USE IN DIAGNOSTIC PROCEDURES"

## Our Abpromise to you: Quality guaranteed and expert technical support

- Replacement or refund for products not performing as stated on the datasheet
- Valid for 12 months from date of delivery
- Response to your inquiry within 24 hours
- We provide support in Chinese, English, French, German, Japanese and Spanish

- Extensive multi-media technical resources to help you
- We investigate all quality concerns to ensure our products perform to the highest standards

If the product does not perform as described on this datasheet, we will offer a refund or replacement. For full details of the Abpromise, please visit <https://www.abcam.com/abpromise> or contact our technical team.

#### **Terms and conditions**

---

- Guarantee only valid for products bought direct from Abcam or one of our authorized distributors