


Anti-Selenium Binding Protein 1/SBP antibody ab180782

[4 Images](#)

Overview

Product name	Anti-Selenium Binding Protein 1/SBP antibody
Description	Rabbit polyclonal to Selenium Binding Protein 1/SBP
Host species	Rabbit
Tested applications	Suitable for: IHC-P, WB, ICC/IF
Species reactivity	Reacts with: Rat, Human Predicted to work with: Cow, Orangutan 
Immunogen	Recombinant fragment corresponding to Human Selenium Binding Protein 1/SBP (C terminal). Database link: Q13228
Positive control	721_B cell lysate
General notes	<p>The Life Science industry has been in the grips of a reproducibility crisis for a number of years. Abcam is leading the way in addressing this with our range of recombinant monoclonal antibodies and knockout edited cell lines for gold-standard validation. Please check that this product meets your needs before purchasing.</p> <p>If you have any questions, special requirements or concerns, please send us an inquiry and/or contact our Support team ahead of purchase. Recommended alternatives for this product can be found below, along with publications, customer reviews and Q&As</p>

Properties

Form	Liquid
Storage instructions	Shipped at 4°C. Store at +4°C short term (1-2 weeks). Upon delivery aliquot. Store at -20°C long term. Avoid freeze / thaw cycle.
Storage buffer	pH: 7.30 Preservative: 0.02% Sodium azide Constituents: 49% PBS, 50% Glycerol
Purity	Immunogen affinity purified
Clonality	Polyclonal
Isotype	IgG

Applications

The Abpromise guarantee

Our **Abpromise guarantee** covers the use of ab180782 in the following tested applications.

The application notes include recommended starting dilutions; optimal dilutions/concentrations should be determined by the end user.

Application	Abreviews	Notes
IHC-P		1/50 - 1/200. ab171870 - Rabbit polyclonal IgG, is suitable for use as an isotype control with this antibody.
WB		1/500 - 1/2000. Predicted molecular weight: 52 kDa.
ICC/IF		Use at an assay dependent concentration.

Target

Function

Selenium-binding protein which may be involved in the sensing of reactive xenobiotics in the cytoplasm. May be involved in intra-Golgi protein transport.

Tissue specificity

Highly expressed in liver, lung, colon, prostate, kidney and pancreas. In brain, present both in neurons and glia (at protein level). Down-regulated in lung adenocarcinoma, colorectal carcinoma and ovarian cancer. Two-fold up-regulated in brain and blood from schizophrenia patients.

Sequence similarities

Belongs to the selenium-binding protein family.

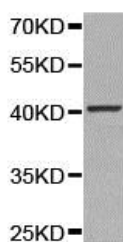
Post-translational modifications

Phosphorylated.
The N-terminus is blocked.

Cellular localization

Nucleus. Cytoplasm > cytosol. Membrane. May associate with Golgi membrane. May associate with the membrane of autophagosomes.

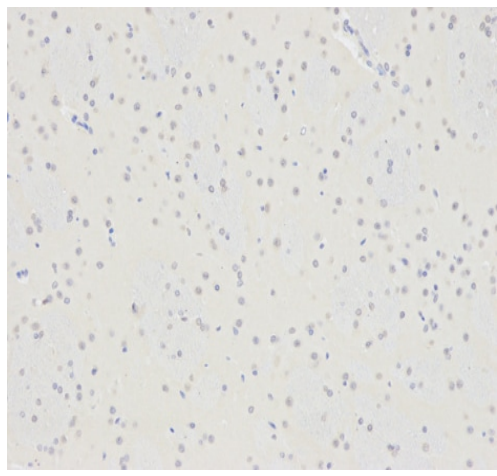
Images



Anti-Selenium Binding Protein 1/SBP antibody (ab180782) at
1/500 dilution + 721_B cell lysate

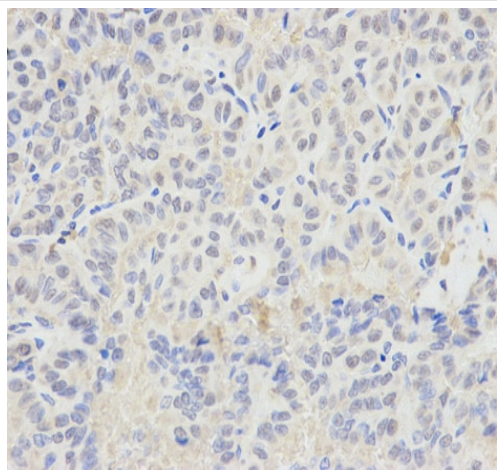
Predicted band size: 52 kDa

Western blot - Anti-Selenium Binding Protein 1/SBP
antibody (ab180782)



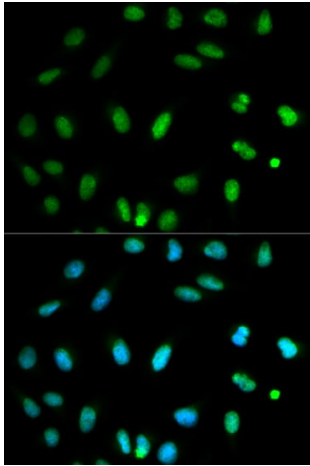
Immunohistochemistry (Formalin/PFA-fixed paraffin-embedded sections) analysis of rat brain tissue labelling Selenium Binding Protein 1/SBP with ab180782 at 1/200. Magnification: 200x.

Immunohistochemistry (Formalin/PFA-fixed paraffin-embedded sections) - Anti-Selenium Binding Protein 1/SBP antibody (ab180782)



Immunohistochemistry (Formalin/PFA-fixed paraffin-embedded sections) analysis of human thyroid cancer tissue labelling Selenium Binding Protein 1/SBP with ab180782 at 1/200. Magnification: 400x.

Immunohistochemistry (Formalin/PFA-fixed paraffin-embedded sections) - Anti-Selenium Binding Protein 1/SBP antibody (ab180782)



Immunocytochemistry/Immunofluorescence analysis of HeLa cells using ab180782. Blue DAPI for nuclear staining.

Immunocytochemistry/ Immunofluorescence - Anti-Selenium Binding Protein 1/SBP antibody (ab180782)

Please note: All products are "FOR RESEARCH USE ONLY. NOT FOR USE IN DIAGNOSTIC PROCEDURES"

Our Abpromise to you: Quality guaranteed and expert technical support

- Replacement or refund for products not performing as stated on the datasheet
- Valid for 12 months from date of delivery
- Response to your inquiry within 24 hours
- We provide support in Chinese, English, French, German, Japanese and Spanish
- Extensive multi-media technical resources to help you
- We investigate all quality concerns to ensure our products perform to the highest standards

If the product does not perform as described on this datasheet, we will offer a refund or replacement. For full details of the Abpromise, please visit <https://www.abcam.com/abpromise> or contact our technical team.

Terms and conditions

- Guarantee only valid for products bought direct from Abcam or one of our authorized distributors