

## Product datasheet

### Anti-SelM antibody [EPR8279] ab133681

Recombinant RabMAb

[6 References](#) [3 Images](#)

#### Overview

<b>Product name</b>	Anti-SelM antibody [EPR8279]
<b>Description</b>	Rabbit monoclonal [EPR8279] to SelM
<b>Host species</b>	Rabbit
<b>Tested applications</b>	<b>Suitable for:</b> WB, IHC-P <b>Unsuitable for:</b> IP
<b>Species reactivity</b>	<b>Reacts with:</b> Human
<b>Immunogen</b>	Synthetic peptide corresponding to Human SelM aa 100-200 (C terminal). Database link: <a href="#">Q8WWX9</a>
<b>Positive control</b>	Human ovary cancer and stomach lysates; Human brain tissue
<b>General notes</b>	This product is a recombinant monoclonal antibody, which offers several advantages including: <ul style="list-style-type: none"> <li>- High batch-to-batch consistency and reproducibility</li> <li>- Improved sensitivity and specificity</li> <li>- Long-term security of supply</li> <li>- Animal-free production</li> </ul> For more information <a href="#">see here</a> . Our RabMAb <sup>®</sup> technology is a patented hybridoma-based technology for making rabbit monoclonal antibodies. For details on our patents, please refer to <a href="#">RabMAb<sup>®</sup> patents</a> . Mouse, Rat: We have preliminary internal testing data to indicate this antibody may not react with these species. Please contact us for more information.

#### Properties

<b>Form</b>	Liquid
<b>Storage instructions</b>	Shipped at 4°C. Store at -20°C. Stable for 12 months at -20°C.
<b>Storage buffer</b>	pH: 7.20 Preservative: 0.01% Sodium azide Constituents: 9% PBS, 40% Glycerol (glycerin, glycerine), 0.05% BSA, 50% Tissue culture supernatant
<b>Purity</b>	Protein A purified

<b>Clonality</b>	Monoclonal
<b>Clone number</b>	EPR8279
<b>Isotype</b>	IgG

## Applications

**The Abpromise guarantee** Our **Abpromise guarantee** covers the use of ab133681 in the following tested applications. The application notes include recommended starting dilutions; optimal dilutions/concentrations should be determined by the end user.

Application	Abreviews	Notes
<b>WB</b>		1/1000 - 1/10000. Predicted molecular weight: 16 kDa.
<b>IHC-P</b>		1/50 - 1/100. Perform heat mediated antigen retrieval with citrate buffer pH 6 before commencing with IHC staining protocol.

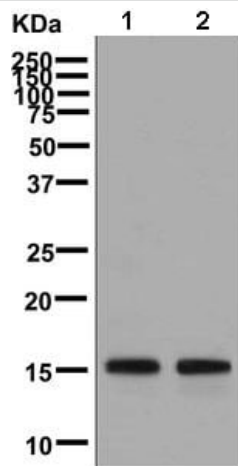
**Application notes** Is unsuitable for IP.

## Target

**Relevance** Selenoprotein M is widely expressed and expressed highly in the mammalian brain. It is localized to the perinuclear structures (Golgi/ER). A growing body of evidence relates selenium to cancer prevention, immune system function, male fertility, cardiovascular disorder, control of the aging and neurodegeneration process. Selenoproteins are thought to be responsible for the majority of these biomedical effects of selenium. Approximately 17 selenoproteins have been identified until now. Although the function of many selenoproteins are unknown, some play important roles in antioxidant mechanisms. It has been also implicated in the regulation of signaling pathways through catalysis of thiol/disulfide exchange. The roles of Selenoprotein M have not been clearly identified until present time.

**Cellular localization** Cytoplasm; perinuclear region. Endoplasmic reticulum Probable. Golgi apparatus Probable. Note: Localized to perinuclear structures corresponding to Golgi and endoplasmic reticulum.

## Images



Western blot - Anti-SelM antibody [EPR8279]  
(ab133681)

**All lanes** : Anti-SelM antibody [EPR8279] (ab133681) at 1/1000 dilution

**Lane 1** : Human ovary cancer lysate

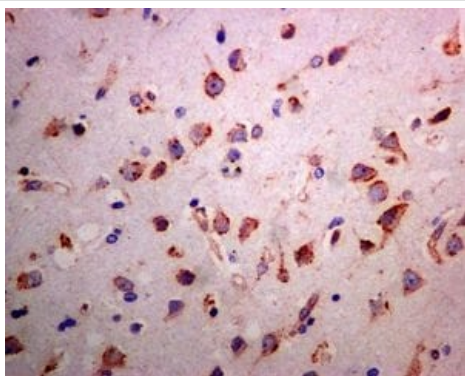
**Lane 2** : Human stomach lysate

Lysates/proteins at 10 µg per lane.

#### Secondary

**All lanes** : HRP labelled goat anti-rabbit at 1/2000 dilution

**Predicted band size:** 16 kDa



Immunohistochemistry (Formalin/PFA-fixed paraffin-embedded sections) - Anti-SelM antibody  
[EPR8279] (ab133681)

Immunohistochemical analysis of paraffin-embedded Human brain tissue labelling SelM with ab133681 at 1/50 dilution.

Perform heat mediated antigen retrieval with citrate buffer pH 6 before commencing with IHC staining protocol.

#### Why choose a recombinant antibody?



**Research with confidence**  
Consistent and reproducible results



**Long-term and scalable supply**  
Recombinant technology



**Success from the first experiment**  
Confirmed specificity



**Ethical standards compliant**  
Animal-free production

Anti-SelM antibody [EPR8279] (ab133681)

**Please note:** All products are "FOR RESEARCH USE ONLY. NOT FOR USE IN DIAGNOSTIC PROCEDURES"

### **Our Abpromise to you: Quality guaranteed and expert technical support**

---

- Replacement or refund for products not performing as stated on the datasheet
- Valid for 12 months from date of delivery
- Response to your inquiry within 24 hours
  
- We provide support in Chinese, English, French, German, Japanese and Spanish
- Extensive multi-media technical resources to help you
- We investigate all quality concerns to ensure our products perform to the highest standards

If the product does not perform as described on this datasheet, we will offer a refund or replacement. For full details of the Abpromise, please visit <https://www.abcam.com/abpromise> or contact our technical team.

### **Terms and conditions**

---

- Guarantee only valid for products bought direct from Abcam or one of our authorized distributors