


Product datasheet

Anti-SEMA5A antibody ab127002

[3 References](#) [1 Image](#)

Overview

Product name	Anti-SEMA5A antibody
Description	Rabbit polyclonal to SEMA5A
Host species	Rabbit
Tested applications	Suitable for: WB
Species reactivity	Reacts with: Mouse Predicted to work with: Rat, Human 
Immunogen	Recombinant fragment corresponding to Human SEMA5A aa 700-960. Database link: Q13591
Positive control	Mouse brain whole cell lysate.
General notes	<p>The Life Science industry has been in the grips of a reproducibility crisis for a number of years. Abcam is leading the way in addressing this with our range of recombinant monoclonal antibodies and knockout edited cell lines for gold-standard validation. Please check that this product meets your needs before purchasing.</p> <p>If you have any questions, special requirements or concerns, please send us an inquiry and/or contact our Support team ahead of purchase. Recommended alternatives for this product can be found below, along with publications, customer reviews and Q&As</p>

Properties

Form	Liquid
Storage instructions	Shipped at 4°C. Upon delivery aliquot. Store at -20°C or -80°C. Avoid freeze / thaw cycle.
Storage buffer	pH: 7.00 Preservative: 0.01% Thimerosal (merthiolate) Constituents: 78.99% PBS, 1% BSA, 20% Glycerol (glycerin, glycerine)
Purity	Immunogen affinity purified
Clonality	Polyclonal
Isotype	IgG

Applications

The Abpromise guarantee

Our **Abpromise guarantee** covers the use of ab127002 in the following tested applications.

The application notes include recommended starting dilutions; optimal dilutions/concentrations should be determined by the end user.

Application	Abreviews	Notes
WB		1/500 - 1/3000. Predicted molecular weight: 121 kDa.

Target

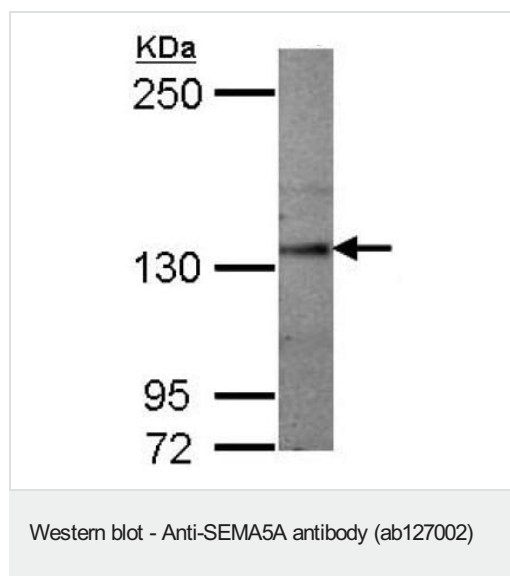
Relevance

Members of the semaphorin protein family are involved in axonal guidance during neural development. Semaphorin 5a is thought to have a bifunctional role in axon guidance, exerting both attractive and inhibitory effects on developing axons associated with limbic function. The thrombospondin repeats of Semaphorin 5a physically interact with both heparan sulfate proteoglycans and chondroitin sulfate proteoglycans, inducing attractive and inhibitory guidance cues, respectively. The biological responses to Semaphorin 5a are induced through binding to its high-affinity receptor, plexin B3, triggering intracellular signaling through Met.

Cellular localization

Membrane; single-pass type I membrane protein

Images



Anti-SEMA5A antibody (ab127002) at 1/1000 dilution + Mouse
brain whole cell
lysate at 50 µg

Predicted band size: 121 kDa

5% SDS PAGE

Please note: All products are "FOR RESEARCH USE ONLY. NOT FOR USE IN DIAGNOSTIC PROCEDURES"

Our Abpromise to you: Quality guaranteed and expert technical support

- Replacement or refund for products not performing as stated on the datasheet
- Valid for 12 months from date of delivery
- Response to your inquiry within 24 hours
- We provide support in Chinese, English, French, German, Japanese and Spanish
- Extensive multi-media technical resources to help you

- We investigate all quality concerns to ensure our products perform to the highest standards

If the product does not perform as described on this datasheet, we will offer a refund or replacement. For full details of the Abpromise, please visit <https://www.abcam.com/abpromise> or contact our technical team.

Terms and conditions

- Guarantee only valid for products bought direct from Abcam or one of our authorized distributors