

Product datasheet

Anti-Semaphorin 3A antibody ab23393

★★★★☆ [8 Abreviews](#) [58 References](#) [2 Images](#)

Overview

Product name	Anti-Semaphorin 3A antibody
Description	Rabbit polyclonal to Semaphorin 3A
Host species	Rabbit
Tested applications	Suitable for: IHC-P, WB
Species reactivity	Reacts with: Rat, Human, Recombinant fragment
Immunogen	Synthetic peptide. This information is proprietary to Abcam and/or its suppliers.
General notes	<p>The Life Science industry has been in the grips of a reproducibility crisis for a number of years. Abcam is leading the way in addressing this with our range of recombinant monoclonal antibodies and knockout edited cell lines for gold-standard validation. Please check that this product meets your needs before purchasing.</p> <p>If you have any questions, special requirements or concerns, please send us an inquiry and/or contact our Support team ahead of purchase. Recommended alternatives for this product can be found below, along with publications, customer reviews and Q&As</p>

Properties

Form	Liquid
Storage instructions	Shipped at 4°C. Upon delivery aliquot and store at -20°C or -80°C. Avoid repeated freeze / thaw cycles.
Storage buffer	Preservative: 0.05% Sodium azide Constituents: 50% Glycerol, 0.1% BSA
Purity	Immunogen affinity purified
Purification notes	This antibody was affinity purified.
Clonality	Polyclonal
Isotype	IgG

Applications

The Abpromise guarantee Our **Abpromise guarantee** covers the use of ab23393 in the following tested applications. The application notes include recommended starting dilutions; optimal dilutions/concentrations should be determined by the end user.

Application	Abreviews	Notes
IHC-P	★★★★☆ (2)	Use at an assay dependent concentration.
WB	★★★★★ (3)	1/1000. Detects a band of approximately 95 kDa (predicted molecular weight: 89 kDa).

Target

Function

Involved in the development of the olfactory system and in neuronal control of puberty. Induces the collapse and paralysis of neuronal growth cones. Could serve as a ligand that guides specific growth cones by a motility-inhibiting mechanism. Binds to the complex neuropilin-1/plexin-1.

Involvement in disease

Hypogonadotropic hypogonadism 16 with or without anosmia

Sequence similarities

Belongs to the semaphorin family.
 Contains 1 Ig-like C2-type (immunoglobulin-like) domain.
 Contains 1 PSI domain.
 Contains 1 Sema domain.

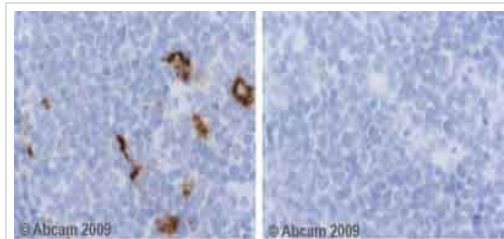
Domain

Strong binding to neuropilin is mediated by the carboxy third of the protein.

Cellular localization

Secreted.

Images



Immunohistochemistry (Formalin/PFA-fixed paraffin-embedded sections) - Anti-Semaphorin 3A antibody (ab23393)

Ab23393 staining human normal ileum. Staining is localized to the cytoplasm.

Left panel: with primary antibody at 1 ug/ml. Right panel: isotype control.

Sections were stained using an automated system DAKO Autostainer Plus, at room temperature. Sections were rehydrated and antigen retrieved with the Dako 3-in-1 AR buffer EDTA pH 9.0 in a DAKO PT Link. Slides were peroxidase blocked in 3% H₂O₂ in methanol for 10 minutes. They were then blocked with Dako Protein block for 10 minutes (containing casein 0.25% in PBS), then incubated with primary antibody for 20 minutes, and detected with Dako Envision Flex amplification kit for 30 minutes. Colorimetric detection was completed with diaminobenzidine for 5 minutes. Slides were counterstained with Haematoxylin and coverslipped under DePeX. Please note that for manual staining we recommend to optimize the primary antibody concentration and incubation time (overnight incubation), and amplification may be required.



Western blot - Anti-Semaphorin 3A antibody (ab23393)

Lanes 1-2 : Anti-Semaphorin 3A antibody (ab23393) at 1/1000 dilution

Lanes 3-4 : Anti-Semaphorin 3A antibody (**ab25999**)

Lane 1 : Neonatal rat brain

Lanes 2 & 4 : Human recombinant Sema3A/Fc chimera (95/125 kDa)

Lane 3 : Neonatal rat brain

Predicted band size: 89 kDa

Membrane was incubated with diluted antibody in 5% non-fat milk, PBS, 0.04% Tween20 for 1 hour at room temperature.

Please note: All products are "FOR RESEARCH USE ONLY. NOT FOR USE IN DIAGNOSTIC PROCEDURES"

Our Abpromise to you: Quality guaranteed and expert technical support

- Replacement or refund for products not performing as stated on the datasheet
- Valid for 12 months from date of delivery
- Response to your inquiry within 24 hours
- We provide support in Chinese, English, French, German, Japanese and Spanish
- Extensive multi-media technical resources to help you
- We investigate all quality concerns to ensure our products perform to the highest standards

If the product does not perform as described on this datasheet, we will offer a refund or replacement. For full details of the Abpromise, please visit <https://www.abcam.com/abpromise> or contact our technical team.

Terms and conditions

- Guarantee only valid for products bought direct from Abcam or one of our authorized distributors