

Anti-Semaphorin 7a antibody [EPR22644-41] - BSA and Azide free (Capture) ab272368

Recombinant RabMAb

2 Images

Overview

Product name	Anti-Semaphorin 7a antibody [EPR22644-41] - BSA and Azide free (Capture)
Description	Rabbit monoclonal [EPR22644-41] to Semaphorin 7a - BSA and Azide free (Capture)
Host species	Rabbit
Tested applications	Suitable for: Sandwich ELISA
Species reactivity	Reacts with: Human
Immunogen	Recombinant fragment. This information is proprietary to Abcam and/or its suppliers.
General notes	<p>ab272368 is a BSA and Azide Free antibody supplied in an unconjugated format and it is suitable for sandwich ELISAs to quantify Human Semaphorin 7A. The recommended pair for sandwich ELISA is:</p> <p>Capture: ab272368, Human Semaphorin 7A Capture Antibody (unconjugated)</p> <p>Detector: ab272369, Human Semaphorin 7A Detector Antibody (unconjugated)</p> <p>The reference range value is 70.3125 - 4500 pg/ml.</p> <p>Our carrier-free antibodies are typically supplied in a PBS-only formulation, purified and free of BSA, sodium azide and glycerol. The carrier-free buffer and high concentration allow for increased conjugation efficiency.</p> <p>This conjugation-ready format is designed for use with fluorochromes, metal isotopes, oligonucleotides, and enzymes, which makes them ideal for antibody labelling, functional and cell-based assays, flow-based assays (e.g. mass cytometry) and Multiplex Imaging applications.</p> <p>Use our conjugation kits for antibody conjugates that are ready-to-use in as little as 20 minutes with <1 minute hands-on-time and 100% antibody recovery: available for fluorescent dyes, HRP, biotin and gold.</p> <p>The recommended antibody orientation is based on internal optimization for ELISA-based assays. Antibody orientation is assay dependent and needs to be optimized for each assay type. Please note that the range provided for this antibody is only an estimation based on the performance of the product using the recommended antibody pair. Performance of the antibody pair will depend on the specific characteristics of your assay. We guarantee the product works in sandwich ELISA, but we do not guarantee the sensitivity or dynamic range of the antibody in your assay.</p> <p>This product is a recombinant monoclonal antibody, which offers several advantages including:</p>

- High batch-to-batch consistency and reproducibility
- Improved sensitivity and specificity
- Long-term security of supply
- Animal-free production

For more information [see here](#).

Our RabMAb® technology is a patented hybridoma-based technology for making rabbit monoclonal antibodies. For details on our patents, please refer to [RabMAb® patents](#).

Properties

Form	Liquid
Storage instructions	Shipped at 4°C. Store at +4°C.
Storage buffer	Constituent: 100% PBS
Carrier free	Yes
Purity	Protein A purified
Clonality	Monoclonal
Clone number	EPR22644-41
Isotype	IgG

Applications

The Abpromise guarantee Our [Abpromise guarantee](#) covers the use of ab272368 in the following tested applications. The application notes include recommended starting dilutions; optimal dilutions/concentrations should be determined by the end user.

Application	Abreviews	Notes
Sandwich ELISA		Use at an assay dependent concentration. Can be paired for Sandwich ELISA with PE / R-Phycoerythrin Conjugation Kit - Lightning-Link® (ab102918) and Biotinylation Kit / Biotin Conjugation Kit (Fast and Type A) - Lightning-Link® (ab201795) .

Target

Function	Plays an important role in integrin-mediated signaling and functions both in regulating cell migration and immune responses. Promotes formation of focal adhesion complexes, activation of the protein kinase PTK2/FAK1 and subsequent phosphorylation of MAPK1 and MAPK3. Promotes production of proinflammatory cytokines by monocytes and macrophages. Plays an important role in modulating inflammation and T-cell-mediated immune responses. Promotes axon growth in the embryonic olfactory bulb. Promotes attachment, spreading and dendrite outgrowth in melanocytes.
Tissue specificity	Detected in skin keratinocytes and on endothelial cells from skin blood vessels (at protein level). Expressed in fibroblasts, keratinocytes, melanocytes, placenta, testis, ovary, spleen, brain, spinal chord, lung, heart, adrenal gland, lymph nodes, thymus, intestine and kidney.
Sequence similarities	Belongs to the semaphorin family.

Contains 1 Ig-like C2-type (immunoglobulin-like) domain.

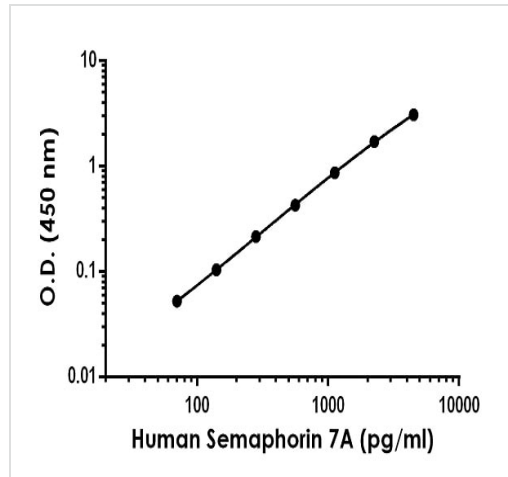
Contains 1 PSI domain.

Contains 1 Sema domain.

Cellular localization

Cell membrane. Detected in a punctate pattern on the cell membrane of basal and supra-basal skin keratinocytes.

Images



Representative standard curve from corresponding SimpleStep ELISA® Kit ([ab272193](#)).

Sandwich ELISA - Anti-Semaphorin 7a antibody
[EPR22644-41] - BSA and Azide free (Capture)
(ab272368)

Why choose a recombinant antibody?

Research with confidence
Consistent and reproducible results

Long-term and scalable supply
Recombinant technology

Success from the first experiment
Confirmed specificity

Ethical standards compliant
Animal-free production

Anti-Semaphorin 7a antibody [EPR22644-41] - BSA and Azide free (Capture) (ab272368)

Please note: All products are "FOR RESEARCH USE ONLY. NOT FOR USE IN DIAGNOSTIC PROCEDURES"

Our Abpromise to you: Quality guaranteed and expert technical support

- Replacement or refund for products not performing as stated on the datasheet
- Valid for 12 months from date of delivery
- Response to your inquiry within 24 hours
- We provide support in Chinese, English, French, German, Japanese and Spanish
- Extensive multi-media technical resources to help you
- We investigate all quality concerns to ensure our products perform to the highest standards

If the product does not perform as described on this datasheet, we will offer a refund or replacement. For full details of the Abpromise, please visit <https://www.abcam.com/abpromise> or contact our technical team.

Terms and conditions

- Guarantee only valid for products bought direct from Abcam or one of our authorized distributors