

### Anti-SEN5 antibody **ab58420**

★★★★★ [3 Abreviews](#) [2 References](#) [2 Images](#)

#### Overview

<b>Product name</b>	Anti-SEN5 antibody
<b>Description</b>	Rabbit polyclonal to SEN5
<b>Host species</b>	Rabbit
<b>Tested applications</b>	<b>Suitable for:</b> WB, IHC-P
<b>Species reactivity</b>	<b>Reacts with:</b> Human, African green monkey
<b>Immunogen</b>	Synthetic peptide corresponding to Human SEN5 aa 651-700. Database link: <a href="#">Q96HI0</a>
<b>Positive control</b>	IHC-P: Human lung carcinoma. WB: Cos-7 cell extract.
<b>General notes</b>	<p>The Life Science industry has been in the grips of a reproducibility crisis for a number of years. Abcam is leading the way in addressing this with our range of recombinant monoclonal antibodies and knockout edited cell lines for gold-standard validation. Please check that this product meets your needs before purchasing.</p> <p>If you have any questions, special requirements or concerns, please send us an inquiry and/or contact our Support team ahead of purchase. Recommended alternatives for this product can be found below, along with publications, customer reviews and Q&amp;As</p>

#### Properties

<b>Form</b>	Liquid
<b>Storage instructions</b>	Shipped at 4°C. Store at -20°C. Stable for 12 months at -20°C.
<b>Storage buffer</b>	<p>pH: 7.40</p> <p>Preservative: 0.02% Sodium azide</p> <p>Constituents: PBS, 50% Glycerol (glycerin, glycerine), 0.87% Sodium chloride</p> <p>Without Mg+2 and Ca+2</p>
<b>Purity</b>	Immunogen affinity purified
<b>Clonality</b>	Polyclonal
<b>Isotype</b>	IgG

#### Applications

## The Abpromise guarantee

Our **Abpromise guarantee** covers the use of ab58420 in the following tested applications.

The application notes include recommended starting dilutions; optimal dilutions/concentrations should be determined by the end user.

Application	Abreviews	Notes
WB	★★★★★ (2)	Use at an assay dependent concentration. Detects a band of approximately 87 kDa (predicted molecular weight: 87 kDa).
IHC-P		Use at an assay dependent concentration.

## Target

### Function

Protease that catalyzes two essential functions in the SUMO pathway: processing of full-length SUMO3 to its mature form and deconjugation of SUMO2 and SUMO3 from targeted proteins. Has weak proteolytic activity against full-length SUMO1 or SUMO1 conjugates. Required for cell division.

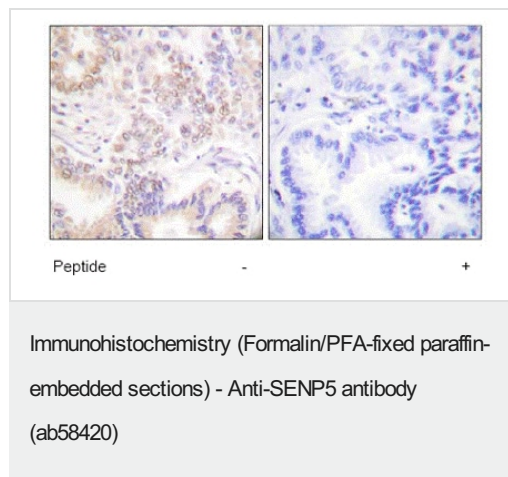
### Sequence similarities

Belongs to the peptidase C48 family.

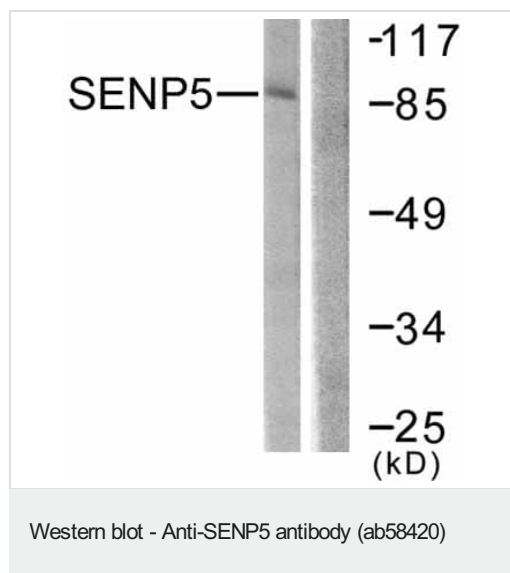
### Cellular localization

Nucleus > nucleolus.

## Images



Immunohistochemical analysis of paraffin embedded human lung carcinoma using ab58420 at 1/50 dilution, in the absence or presence of the immunizing peptide.



**All lanes :** Anti-SENp5 antibody (ab58420) at 1/500 dilution

**Lane 1 :** Cos 7 cell extract

**Lane 2 :** Cos 7 cell extract with immunizing peptide

**Predicted band size:** 87 kDa

**Observed band size:** 87 kDa

**Please note:** All products are "FOR RESEARCH USE ONLY. NOT FOR USE IN DIAGNOSTIC PROCEDURES"

### Our Abpromise to you: Quality guaranteed and expert technical support

- Replacement or refund for products not performing as stated on the datasheet
- Valid for 12 months from date of delivery
- Response to your inquiry within 24 hours
- We provide support in Chinese, English, French, German, Japanese and Spanish
- Extensive multi-media technical resources to help you
- We investigate all quality concerns to ensure our products perform to the highest standards

If the product does not perform as described on this datasheet, we will offer a refund or replacement. For full details of the Abpromise, please visit <https://www.abcam.com/abpromise> or contact our technical team.

### Terms and conditions

- Guarantee only valid for products bought direct from Abcam or one of our authorized distributors