

### Anti-Separase antibody [XJ11-1B12] ab16170

★★★★☆ [4 Abreviews](#) [14 References](#) [1 Image](#)

#### Overview

<b>Product name</b>	Anti-Separase antibody [XJ11-1B12]
<b>Description</b>	Mouse monoclonal [XJ11-1B12] to Separase
<b>Host species</b>	Mouse
<b>Tested applications</b>	<b>Suitable for:</b> WB <b>Unsuitable for:</b> Flow Cyt or ICC/IF
<b>Species reactivity</b>	<b>Reacts with:</b> Human
<b>Immunogen</b>	Recombinant fragment. This information is proprietary to Abcam and/or its suppliers.
<b>Positive control</b>	WB: MDA-MB-231 whole cell lysate.
<b>General notes</b>	<p>Separase antibodies can be used as a specific marker for centrosomes of mitotic cells. The staining of separase in centrosomes can be detected from prophase of mitosis up until anaphase.</p> <p>This antibody clone is manufactured by Abcam. If you require a custom buffer formulation or conjugation for your experiments, please contact <a href="mailto:orders@abcam.com">orders@abcam.com</a>.</p> <p>The Life Science industry has been in the grips of a reproducibility crisis for a number of years. Abcam is leading the way in addressing this with our range of recombinant monoclonal antibodies and knockout edited cell lines for gold-standard validation. Please check that this product meets your needs before purchasing.</p> <p>If you have any questions, special requirements or concerns, please send us an inquiry and/or contact our Support team ahead of purchase. Recommended alternatives for this product can be found below, along with publications, customer reviews and Q&amp;As</p>

#### Properties

<b>Form</b>	Liquid
<b>Storage instructions</b>	Shipped at 4°C. Upon delivery aliquot and store at -20°C. Avoid freeze / thaw cycles.
<b>Storage buffer</b>	pH: 7.40 Preservative: 0.02% Sodium azide Constituent: PBS
<b>Purity</b>	Protein G purified
<b>Primary antibody notes</b>	Separase antibodies can be used as a specific marker for centrosomes of mitotic cells. The

	staining of separase in centrosomes can be detected from prophase of mitosis up until anaphase.
<b>Clonality</b>	Monoclonal
<b>Clone number</b>	XJ11-1B12
<b>Isotype</b>	IgG1
<b>Light chain type</b>	kappa

## Applications

**The Abpromise guarantee** Our **Abpromise guarantee** covers the use of ab16170 in the following tested applications. The application notes include recommended starting dilutions; optimal dilutions/concentrations should be determined by the end user.

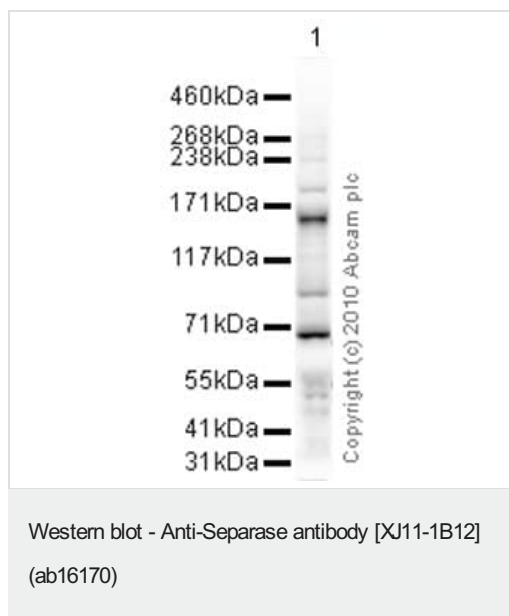
Application	Abreviews	Notes
<b>WB</b>	★★★★★ (2)	Use a concentration of 10 µg/ml. Detects a band of approximately 170 kDa (predicted molecular weight: 233 kDa).

**Application notes** Is unsuitable for Flow Cyt or ICC/IF.

## Target

<b>Function</b>	Caspase-like protease, which plays a central role in the chromosome segregation by cleaving the SCC1/RAD21 subunit of the cohesin complex at the onset of anaphase. During most of the cell cycle, it is inactivated by different mechanisms.
<b>Sequence similarities</b>	Belongs to the peptidase C50 family.
<b>Post-translational modifications</b>	Autocleaves. This function, which is not essential for its protease activity, is unknown. Phosphorylated by CDK1. There are 8 Ser/Thr phosphorylation sites. Among them, Ser-1126 phosphorylation is the major site, which conducts to the enzyme inactivation.
<b>Cellular localization</b>	Cytoplasm. Nucleus.

## Images



Anti-Separase antibody [XJ11-1B12] (ab16170) at 10 µg/ml +  
MDA-MB-231 (Human breast adenocarcinoma cell line) Whole Cell  
Lysate at 20 µg

#### Secondary

Goat polyclonal to Mouse IgG - H&L - Pre-Adsorbed (HRP) at  
1/3000 dilution

Developed using the ECL technique.

Performed under reducing conditions.

**Predicted band size:** 233 kDa

**Observed band size:** 170 kDa

**Additional bands at:** 100 kDa, 70 kDa (possible cleavage  
fragment). We are unsure as to the identity of these extra bands.

**Exposure time:** 3 minutes

**Please note:** All products are "FOR RESEARCH USE ONLY. NOT FOR USE IN DIAGNOSTIC PROCEDURES"

#### Our Abpromise to you: Quality guaranteed and expert technical support

- Replacement or refund for products not performing as stated on the datasheet
- Valid for 12 months from date of delivery
- Response to your inquiry within 24 hours
- We provide support in Chinese, English, French, German, Japanese and Spanish
- Extensive multi-media technical resources to help you
- We investigate all quality concerns to ensure our products perform to the highest standards

If the product does not perform as described on this datasheet, we will offer a refund or replacement. For full details of the Abpromise, please visit <https://www.abcam.com/abpromise> or contact our technical team.

#### Terms and conditions

- Guarantee only valid for products bought direct from Abcam or one of our authorized distributors