

Product datasheet

Anti-SEPT10 antibody [EPR11141(B)] ab169533

Recombinant RabMAb

2 Images

Overview

Product name	Anti-SEPT10 antibody [EPR11141(B)]
Description	Rabbit monoclonal [EPR11141(B)] to SEPT10
Host species	Rabbit
Tested applications	Suitable for: WB Unsuitable for: Flow Cyt, ICC/IF, IHC-P or IP
Species reactivity	Reacts with: Human
Immunogen	Synthetic peptide corresponding to Human SEPT10.
Positive control	HeLa and PC-3 cell lysates.
General notes	<p>This product is a recombinant monoclonal antibody, which offers several advantages including:</p> <ul style="list-style-type: none"> - High batch-to-batch consistency and reproducibility - Improved sensitivity and specificity - Long-term security of supply - Animal-free production <p>For more information see here.</p> <p>Our RabMAb[®] technology is a patented hybridoma-based technology for making rabbit monoclonal antibodies. For details on our patents, please refer to RabMAb[®] patents.</p> <p>Mouse, Rat: We have preliminary internal testing data to indicate this antibody may not react with these species. Please contact us for more information.</p>

Properties

Form	Liquid
Storage instructions	Shipped at 4°C. Store at +4°C short term (1-2 weeks). Upon delivery aliquot. Store at -20°C long term.
Storage buffer	<p>pH: 7.2</p> <p>Preservative: 0.01% Sodium azide</p> <p>Constituents: 9% PBS, 40% Glycerol (glycerin, glycerine), 0.05% BSA, 50% Tissue culture supernatant</p>
Purity	Tissue culture supernatant

Clonality	Monoclonal
Clone number	EPR11141(B)
Isotype	IgG

Applications

The Abpromise guarantee Our **Abpromise guarantee** covers the use of ab169533 in the following tested applications. The application notes include recommended starting dilutions; optimal dilutions/concentrations should be determined by the end user.

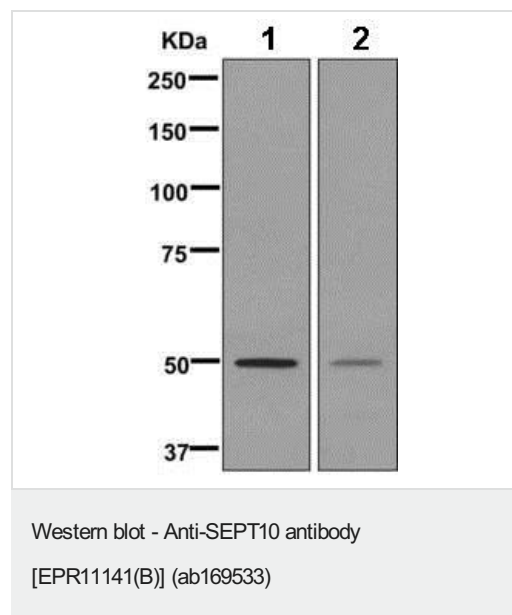
Application	Abreviews	Notes
WB		1/1000 - 1/5000. Predicted molecular weight: 53 kDa.

Application notes Is unsuitable for Flow Cyt, ICC/IF, IHC-P or IP.

Target

Function	Filament-forming cytoskeletal GTPase. May play a role in cytokinesis.
Tissue specificity	Widely expressed. Abundantly expressed in heart and kidney, placenta, skeletal muscles, liver and lung, as well as various tumor cell lines.
Sequence similarities	Belongs to the septin family.
Cellular localization	Cytoplasm. Cytoplasm > cytoskeleton. Using a GFP-fusion protein, detected in the nucleus.

Images



All lanes : Anti-SEPT10 antibody [EPR11141(B)] (ab169533) at 1/1000 dilution

Lane 1 : HeLa cell lysate

Lane 2 : PC-3 cell lysate

Lysates/proteins at 10 µg per lane.

Secondary

All lanes : HRP labeled goat anti-rabbit at 1/2000 dilution

Predicted band size: 53 kDa

Why choose a recombinant antibody?



Research with confidence
Consistent and reproducible results



Long-term and scalable supply
Recombinant technology



Success from the first experiment
Confirmed specificity



Ethical standards compliant
Animal-free production

Anti-SEPT10 antibody [EPR11141(B)] (ab169533)

Please note: All products are "FOR RESEARCH USE ONLY. NOT FOR USE IN DIAGNOSTIC PROCEDURES"

Our Abpromise to you: Quality guaranteed and expert technical support

- Replacement or refund for products not performing as stated on the datasheet
- Valid for 12 months from date of delivery
- Response to your inquiry within 24 hours
- We provide support in Chinese, English, French, German, Japanese and Spanish
- Extensive multi-media technical resources to help you
- We investigate all quality concerns to ensure our products perform to the highest standards

If the product does not perform as described on this datasheet, we will offer a refund or replacement. For full details of the Abpromise, please visit <https://www.abcam.com/abpromise> or contact our technical team.

Terms and conditions

- Guarantee only valid for products bought direct from Abcam or one of our authorized distributors