

## Product datasheet

### Anti-SEPT7 antibody ab186021

★★★★★ [1 Abreviews](#) [3 References](#) [4 Images](#)

#### Overview

|                            |   |
|----------------------------|---|
| <b>Product name</b>        | Anti-SEPT7 antibody   |
| <b>Description</b>         | Rabbit polyclonal to SEPT7  |
| <b>Host species</b>        | Rabbit  |
| <b>Tested applications</b> | <b>Suitable for:</b> IP, WB, IHC-P  |
| <b>Species reactivity</b>  | <b>Reacts with:</b> Mouse, Human<br><b>Predicted to work with:</b> Rat, Rabbit, Horse, Chicken, Guinea pig, Cow, Dog, Turkey, Pig, Xenopus laevis, Chimpanzee, Zebrafish, Rhesus monkey, Gorilla, Orangutan, Xenopus tropicalis |



|                  |   |
|------------------|---|
| <b>Immunogen</b> | Synthetic peptide within Human SEPT7 aa 350 to the C-terminus. The exact immunogen sequence used to generate this antibody is proprietary information. If additional detail on the immunogen is needed to determine the suitability of the antibody for your needs, please <a href="#">contact</a> our Scientific Support team to discuss your requirements.<br>Database link: <a href="#">Q16181</a> |
|------------------|---|

 [Run BLAST with](#)

 [Run BLAST with](#)

|                         |   |
|-------------------------|---|
| <b>Positive control</b> | WB: HeLa, 293T, Jurkat, TCMK-1 and NIH3T3 whole cell lysates. IP: HeLa cell lysate. IHC-P: Human osteosarcoma and mouse teratoma tissues. |
|-------------------------|---|

|                      |   |
|----------------------|---|
| <b>General notes</b> | <p>The Life Science industry has been in the grips of a reproducibility crisis for a number of years. Abcam is leading the way in addressing this with our range of recombinant monoclonal antibodies and knockout edited cell lines for gold-standard validation. Please check that this product meets your needs before purchasing.</p> <p>If you have any questions, special requirements or concerns, please send us an inquiry and/or contact our Support team ahead of purchase. Recommended alternatives for this product can be found below, along with publications, customer reviews and Q&amp;As</p> |
|----------------------|---|

#### Properties

|                             |   |
|-----------------------------|---|
| <b>Form</b>                 | Liquid  |
| <b>Storage instructions</b> | Shipped at 4°C. Store at +4°C short term (1-2 weeks). Upon delivery aliquot. Store at -20°C long term. Avoid freeze / thaw cycle. |
| <b>Storage buffer</b>       | pH: 7<br>Preservative: 0.09% Sodium azide<br>Constituent: 99% Tris citrate/phosphate  |

|                  |                             |
|------------------|-----------------------------|
|                  | pH 7 to 8                   |
| <b>Purity</b>    | Immunogen affinity purified |
| <b>Clonality</b> | Polyclonal                  |
| <b>Isotype</b>   | IgG                         |

## Applications

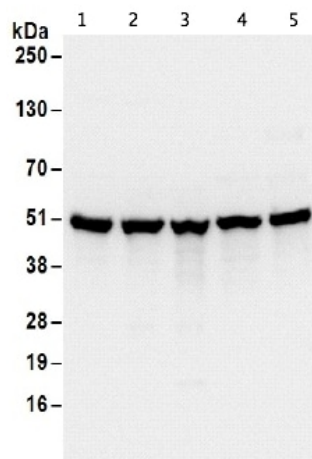
**The Abpromise guarantee** Our **Abpromise guarantee** covers the use of ab186021 in the following tested applications. The application notes include recommended starting dilutions; optimal dilutions/concentrations should be determined by the end user.

| Application  | Abreviews | Notes  |
|--------------|-----------|--|
| <b>IP</b>    |           | Use at 2-10 µg/mg of lysate.   |
| <b>WB</b>    |           | 1/2000 - 1/10000. Predicted molecular weight: 51 kDa.  |
| <b>IHC-P</b> |           | 1/500 - 1/2000. Perform heat mediated antigen retrieval with citrate buffer pH 6 before commencing with IHC staining protocol. |

## Target

|                              |   |
|------------------------------|---|
| <b>Function</b>              | Filament-forming cytoskeletal GTPase. Required for normal organization of the actin cytoskeleton. Required for normal progress through mitosis. Involved in cytokinesis. Required for normal association of CENPE with the kinetochore. Plays a role in ciliogenesis and collective cell movements.   |
| <b>Tissue specificity</b>    | Widely expressed.   |
| <b>Sequence similarities</b> | Belongs to the septin family.   |
| <b>Cellular localization</b> | Cytoplasm. Chromosome > centromere > kinetochore. Cytoplasm > cytoskeleton > spindle. Cleavage furrow. Midbody. Cytoplasm > cytoskeleton > cilium axoneme. Distributed throughout the cytoplasm in prometaphase cells. Associated with the spindle during metaphase. Associated with the central spindle and at the cleavage furrow in anaphase cells. Detected at the midbody in telophase. Associated with actin stress fibers. |

## Images



Western blot - Anti-SEPT7 antibody (ab186021)

**All lanes :** Anti-SEPT7 antibody (ab186021) at 0.1 µg/ml

**Lane 1 :** HeLa whole cell lysate

**Lane 2 :** 293T whole cell lysate

**Lane 3 :** Jurkat whole cell lysate

**Lane 4 :** TCMK-1 whole cell lysate

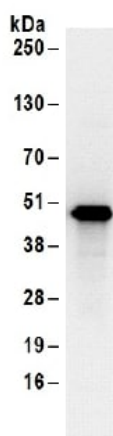
**Lane 5 :** NIH3T3 whole cell lysate

Lysates/proteins at 50 µg per lane.

Developed using the ECL technique.

**Predicted band size:** 51 kDa

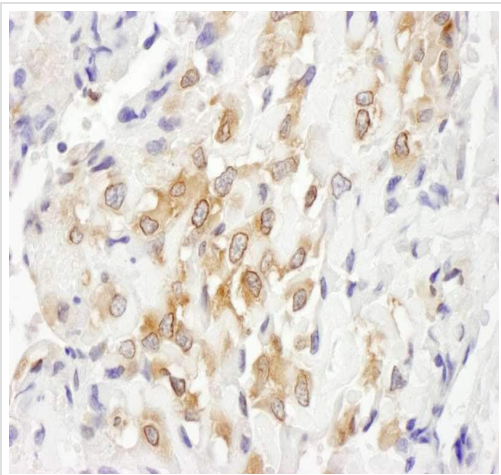
**Exposure time:** 1 second



Immunoprecipitation - Anti-SEPT7 antibody  
(ab186021)

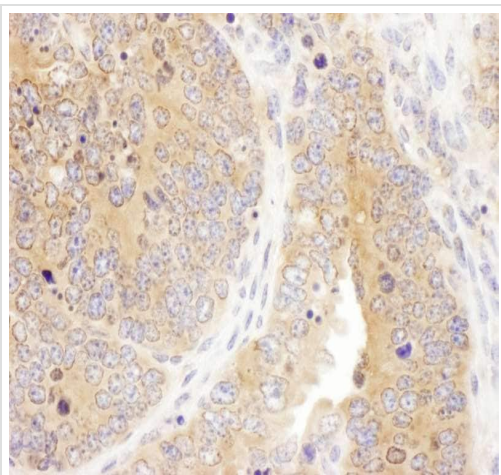
ab186021 at 1 µg/ml detecting SEPT7 in HeLa whole cell lysate by WB following IP. ab186021 was used for IP at 6 µg/mg of lysate, 1 mg of lysate was used for IP and 20% of the IP was loaded.

Detection: Chemiluminescence with an exposure time of 1 second.



Immunohistochemical analysis of formalin-fixed, paraffin-embedded human osteosarcoma labeling SEPT7 with ab186021 at a 1/1000 dilution.

Immunohistochemistry (Formalin/PFA-fixed paraffin-embedded sections) - Anti-SEPT7 antibody (ab186021)



Immunohistochemical analysis of formalin-fixed, paraffin-embedded mouse teratoma labeling SEPT7 with ab186021 at a 1/1000 dilution.

Immunohistochemistry (Formalin/PFA-fixed paraffin-embedded sections) - Anti-SEPT7 antibody (ab186021)

**Please note:** All products are "FOR RESEARCH USE ONLY. NOT FOR USE IN DIAGNOSTIC PROCEDURES"

#### Our Abpromise to you: Quality guaranteed and expert technical support

- Replacement or refund for products not performing as stated on the datasheet
- Valid for 12 months from date of delivery
- Response to your inquiry within 24 hours
- We provide support in Chinese, English, French, German, Japanese and Spanish

- Extensive multi-media technical resources to help you
- We investigate all quality concerns to ensure our products perform to the highest standards

If the product does not perform as described on this datasheet, we will offer a refund or replacement. For full details of the Abpromise, please visit <https://www.abcam.com/abpromise> or contact our technical team.

#### **Terms and conditions**

---

- Guarantee only valid for products bought direct from Abcam or one of our authorized distributors