

Product datasheet

Anti-SERCA2 ATPase antibody [EPR9392] ab150435

Recombinant RabMAb

★★★★★ 1 Abreviews 13 References 10 Images

Overview

Product name	Anti-SERCA2 ATPase antibody [EPR9392]
Description	Rabbit monoclonal [EPR9392] to SERCA2 ATPase
Host species	Rabbit
Specificity	The mouse and rat recommendation is based on the WB results. We do not guarantee IHC-P for mouse and rat.
Tested applications	Suitable for: WB, IHC-P, ICC/IF, Flow Cyt (Intra)
Species reactivity	Reacts with: Mouse, Rat, Human
Immunogen	Synthetic peptide within Human SERCA2 ATPase aa 1-100 (N terminal). The exact sequence is proprietary.
Positive control	WB: HeLa and HepG2 whole cell lysates. Rat and mouse brain tissue lysates. ICC/IF: HeLa and HepG2 cells. IHC-P: Human kidney, liver, brain, and lung tissue. Flow-cyt: HepG2 cells.
General notes	<p>This product is a recombinant monoclonal antibody, which offers several advantages including:</p> <ul style="list-style-type: none"> - High batch-to-batch consistency and reproducibility - Improved sensitivity and specificity - Long-term security of supply - Animal-free production <p>For more information see here.</p> <p>Our RabMAb[®] technology is a patented hybridoma-based technology for making rabbit monoclonal antibodies. For details on our patents, please refer to RabMAb[®] patents.</p>

Properties

Form	Liquid
Storage instructions	Shipped at 4°C. Store at +4°C short term (1-2 weeks). Upon delivery aliquot. Store at -20°C long term. Avoid freeze / thaw cycle.
Storage buffer	Preservative: 0.01% Sodium azide Constituents: 59% PBS, 40% Glycerol (glycerin, glycerine), 0.05% BSA
Purity	Protein A purified
Clonality	Monoclonal

Clone number	EPR9392
Isotype	IgG

Applications

The Abpromise guarantee Our **Abpromise guarantee** covers the use of ab150435 in the following tested applications. The application notes include recommended starting dilutions; optimal dilutions/concentrations should be determined by the end user.

Application	Abreviews	Notes
WB		1/5000 - 1/10000. Predicted molecular weight: 115 kDa. For unpurified use at 1/20000 - 1/100000.
IHC-P		1/50 - 1/100. Perform heat mediated antigen retrieval before commencing with IHC staining protocol. See IHC antigen retrieval protocols. The mouse and rat recommendation is based on the WB results. We do not guarantee IHC-P for mouse and rat.
ICC/IF		1/100 - 1/250.
Flow Cyt (Intra)		1/100 - 1/1000. ab172730 - Rabbit monoclonal IgG, is suitable for use as an isotype control with this antibody.

Target

Function	This magnesium-dependent enzyme catalyzes the hydrolysis of ATP coupled with the translocation of calcium from the cytosol to the sarcoplasmic reticulum lumen. Isoform 2 is involved in the regulation of the contraction/relaxation cycle.
Tissue specificity	Isoform 1 is widely expressed in smooth muscle and nonmuscle tissues such as in adult skin epidermis, with highest expression in liver, pancreas and lung, and intermediate expression in brain, kidney and placenta. Also expressed at lower levels in heart and skeletal muscle. Isoforms 2 and 3 are highly expressed in the heart and slow twitch skeletal muscle. Expression of isoform 3 is predominantly restricted to cardiomyocytes and in close proximity to the sarcolemma. Both isoforms are mildly expressed in lung, kidney, liver, pancreas and placenta. Expression of isoform 3 is amplified during monocytic differentiation and also observed in the fetal heart.
Involvement in disease	<p>Defects in ATP2A2 are a cause of acrokeratosis verruciformis (AKV) [MIM:101900]; also known as Hopf disease. AKV is a localized disorder of keratinization, which is inherited as an autosomal dominant trait. Its onset is early in life with multiple flat-topped, flesh-colored papules on the hands and feet, punctate keratoses on the palms and soles, with varying degrees of nail involvement. The histopathology shows a distinctive pattern of epidermal features with hyperkeratosis, hypergranulosis, and acanthosis together with papillomatosis. These changes are frequently associated with circumscribed elevations of the epidermis that are said to resemble church spires. There are no features of dyskeratosis or acantholysis, the typical findings in lesions of Darier disease.</p> <p>Defects in ATP2A2 are the cause of Darier disease (DD) [MIM:124200]; also known as Darier-White disease (DAR). DD is an autosomal dominantly inherited skin disorder characterized by</p>

loss of adhesion between epidermal cells (acantholysis) and abnormal keratinization. Patients with mild disease may have no more than a few scattered keratotic papules or subtle nail changes, whereas those with severe disease are handicapped by widespread malodorous keratotic plaques. In a few families, neuropsychiatric abnormalities such as mild mental retardation, schizophrenia, bipolar disorder and epilepsy have been reported. Stress, UV exposure, heat, sweat, friction, and oral contraception exacerbate disease symptoms. Prevalence has been estimated at 1 in 50000. Clinical variants of DD include hypertrophic, vesicobullous, hypopigmented, cornifying, zosteriform or linear, acute and comedonal subtypes. Comedonal Darier disease (CDD) is characterized by the coexistence of acne-like comedonal lesions with typical Darier hyperkeratotic papules on light-exposed areas. At histopathologic level, CDD differs from classic DD in the prominent follicular involvement and the presence of greatly elongated dermal villi.

Sequence similarities

Belongs to the cation transport ATPase (P-type) (TC 3.A.3) family. Type IIA subfamily.

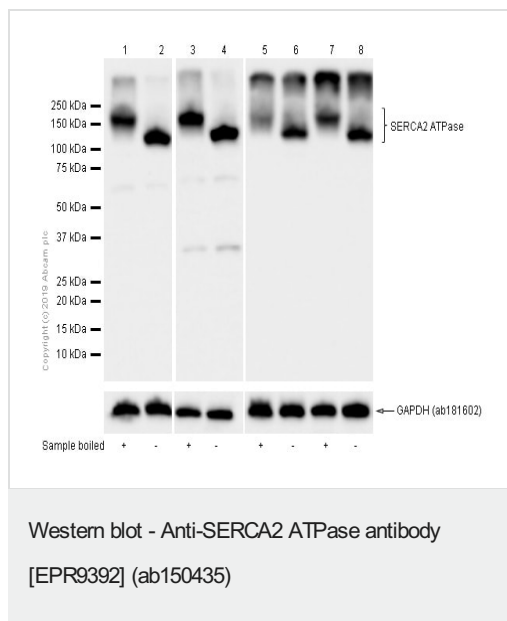
Post-translational modifications

Nitrated under oxidative stress. Nitration on the two tyrosine residues inhibits catalytic activity.

Cellular localization

Endoplasmic reticulum membrane. Sarcoplasmic reticulum membrane.

Images



All lanes : Anti-SERCA2 ATPase antibody [EPR9392] (ab150435) at 1/5000 dilution (Purified)

Lane 1 : HeLa (Human cervix adenocarcinoma epithelial cell) whole cell lysates boiled

Lane 2 : HeLa (Human cervix adenocarcinoma epithelial cell) whole cell lysates unboiled

Lane 3 : HepG2 (Human hepatocellular carcinoma epithelial cell) whole cell lysates boiled

Lane 4 : HepG2 (Human hepatocellular carcinoma epithelial cell) whole cell lysates unboiled

Lane 5 : Mouse brain lysates boiled

Lane 6 : Mouse brain lysates unboiled

Lane 7 : Rat brain lysates boiled

Lane 8 : Rat brain lysates unboiled

Lysates/proteins at 20 µg per lane.

Secondary

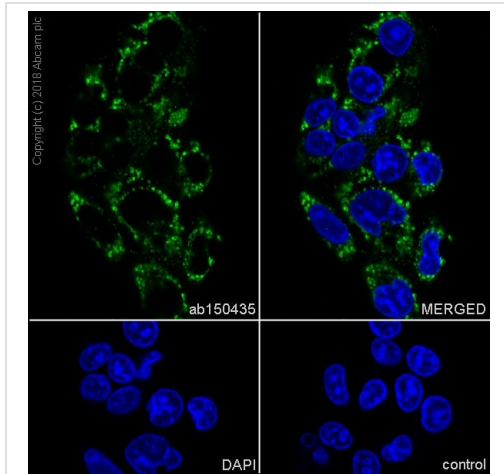
All lanes : Goat Anti-Rabbit IgG H&L (HRP) ([ab97051](#)) at 1/20000 dilution

Predicted band size: 115 kDa

Observed band size: 115,140 kDa

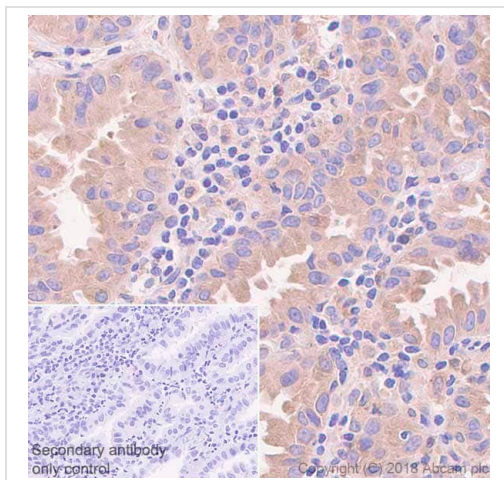
Blocking/Diluting buffer: 5% NFDM/TBST

Suggest to use non-boiled samples, as boiling process could cause membrane protein aggregates (PMID: 16023741 and PMID: 8670158).



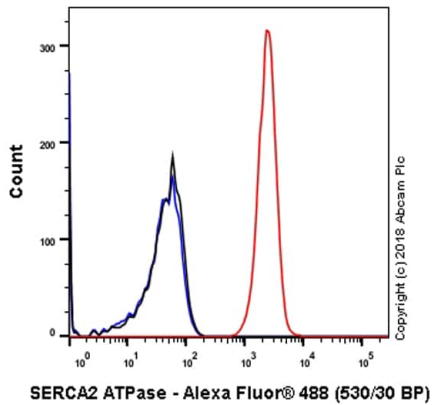
Immunocytochemistry/ Immunofluorescence - Anti-SERCA2 ATPase antibody [EPR9392] (ab150435)

Immunocytochemistry/ Immunofluorescence analysis of HepG2 (Human hepatocellular carcinoma epithelial cell) cells labeling SERCA2 ATPase with Purified ab150435 at 1/100 dilution (10 µg/mL). Cells were fixed in 100% Methanol. Goat anti rabbit IgG (Alexa Fluor® 488, [ab150077](#)) was used as the secondary antibody at 1/1000 (2 µg/mL) dilution. DAPI (blue) was used as nuclear counterstain. PBS instead of the primary antibody was used as the secondary antibody only control.



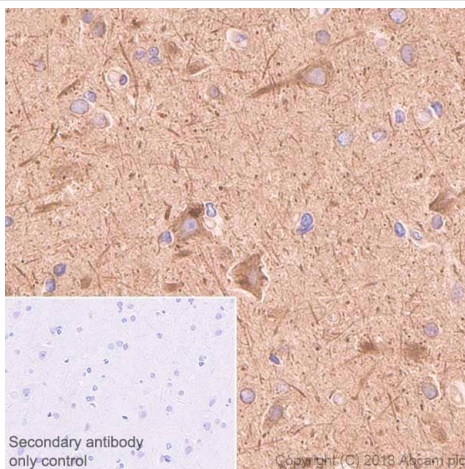
Immunohistochemistry (Formalin/PFA-fixed paraffin-embedded sections) - Anti-SERCA2 ATPase antibody [EPR9392] (ab150435)

Immunohistochemistry (Formalin/PFA-fixed paraffin-embedded sections) analysis of Human lung carcinoma tissue sections labeling SERCA2 ATPase with purified ab150435 at 1/50 dilution (20 µg/mL). Perform heat mediated antigen retrieval using [ab93684](#) (Tris/EDTA buffer, pH 9.0). ImmunoHistoProbe one step HRP Polymer (ready to use) was used as the secondary antibody. Negative control: PBS instead of the primary antibody. Hematoxylin was used as a counterstain.



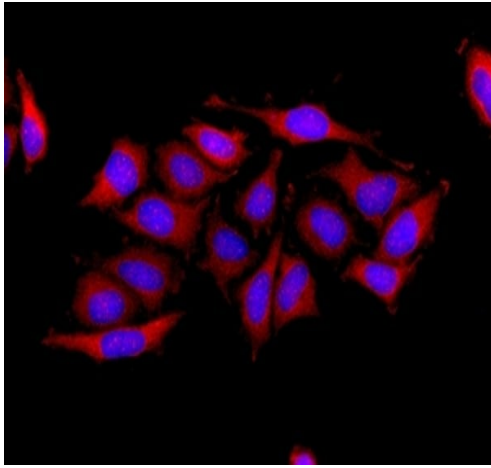
Flow Cytometry (Intracellular) - Anti-SERCA2
ATPase antibody [EPR9392] (ab150435)

Intracellular Flow Cytometry analysis of HepG2 (Human hepatocellular carcinoma epithelial cell) cells labeling SERCA2 ATPase with Purified ab150435 at 1/1000 dilution (1 µg/mL) (Red). Cells were fixed with 80% Methanol and permeabilised with 0.1% Tween-20. A Goat anti rabbit IgG (Alexa Fluor® 488, [ab150077](#)) secondary antibody was used at 1/2000. Isotype control - Rabbit monoclonal IgG (Black). Unlabeled control - Cell without incubation with primary antibody and secondary antibody (Blue).



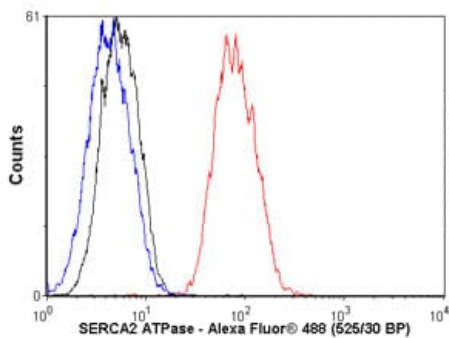
Immunohistochemistry (Formalin/PFA-fixed paraffin-embedded sections) - Anti-SERCA2 ATPase
antibody [EPR9392] (ab150435)

Immunohistochemistry (Formalin/PFA-fixed paraffin-embedded sections) analysis of Human brain tissue sections labeling SERCA2 ATPase with purified ab150435 at 1/50 dilution (20 µg/mL). Perform heat mediated antigen retrieval using [ab93684](#) (Tris/EDTA buffer, pH 9.0). ImmunoHistoProbe one step HRP Polymer (ready to use) was used as the secondary antibody. Negative control: PBS instead of the primary antibody. Hematoxylin was used as a counterstain.



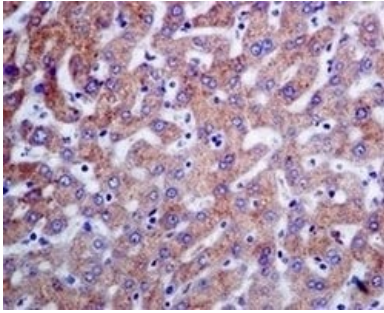
Immunocytochemistry/ Immunofluorescence - Anti-SERCA2 ATPase antibody [EPR9392] (ab150435)

Immunofluorescence analysis of HeLa cells labelling SERCA2 ATPase with unpurified ab150435 at 1/100.



Flow Cytometry (Intracellular) - Anti-SERCA2 ATPase antibody [EPR9392] (ab150435)

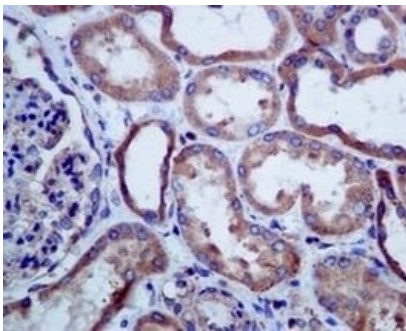
Overlay histogram showing HepG2 cells stained with unpurified ab150435 (red line). The cells were fixed with 80% methanol (5 min) and then permeabilized with 0.1% PBS-Tween for 20 min. The cells were then incubated in 1x PBS / 10% normal goat serum / 0.3M glycine to block non-specific protein-protein interactions followed by the antibody (ab150435, 1/1000 dilution) for 30 min at 22°C. The secondary antibody used was Alexa Fluor® 488 goat anti-rabbit IgG (H&L) ([ab150077](#)) at 1/2000 dilution for 30 min at 22°C. Isotype control antibody (black line) was rabbit IgG (monoclonal) (0.1 µg/1x10⁶ cells) used under the same conditions. Unlabelled sample (blue line) was also used as a control. Acquisition of >5,000 events were collected using a 20mW Argon ion laser (488nm) and 525/30 bandpass filter. This antibody gave a positive signal in HepG2 cells fixed with 4% paraformaldehyde (10 min)/permeabilized with 0.1% PBS-Tween for 20 min used under the same conditions.



Immunohistochemistry (Formalin/PFA-fixed paraffin-embedded sections) - Anti-SERCA2 ATPase antibody [EPR9392] (ab150435)

Immunohistochemical analysis of paraffin embedded Human liver tissue labelling SERCA2 ATPase with unpurified ab150435 at 1/50.

Perform heat mediated antigen retrieval before commencing with IHC staining protocol.



Immunohistochemistry (Formalin/PFA-fixed paraffin-embedded sections) - Anti-SERCA2 ATPase antibody [EPR9392] (ab150435)

Immunohistochemical analysis of paraffin embedded Human kidney tissue labelling SERCA2 ATPase with unpurified ab150435 at 1/50.

Perform heat mediated antigen retrieval before commencing with IHC staining protocol.

Why choose a recombinant antibody?



Research with confidence
Consistent and reproducible results



Long-term and scalable supply
Recombinant technology



Success from the first experiment
Confirmed specificity



Ethical standards compliant
Animal-free production

Anti-SERCA2 ATPase antibody [EPR9392] (ab150435)

Please note: All products are "FOR RESEARCH USE ONLY. NOT FOR USE IN DIAGNOSTIC PROCEDURES"

Our Abpromise to you: Quality guaranteed and expert technical support

- Replacement or refund for products not performing as stated on the datasheet
- Valid for 12 months from date of delivery
- Response to your inquiry within 24 hours

- We provide support in Chinese, English, French, German, Japanese and Spanish
- Extensive multi-media technical resources to help you
- We investigate all quality concerns to ensure our products perform to the highest standards

If the product does not perform as described on this datasheet, we will offer a refund or replacement. For full details of the Abpromise, please visit <https://www.abcam.com/abpromise> or contact our technical team.

Terms and conditions

- Guarantee only valid for products bought direct from Abcam or one of our authorized distributors