


# Anti-Serine Palmitoyltransferase antibody ab229330

3 Images

## Overview

<b>Product name</b>	Anti-Serine Palmitoyltransferase antibody
<b>Description</b>	Rabbit polyclonal to Serine Palmitoyltransferase
<b>Host species</b>	Rabbit
<b>Tested applications</b>	<b>Suitable for:</b> IHC-P, WB
<b>Species reactivity</b>	<b>Reacts with:</b> Mouse, Human <b>Predicted to work with:</b> Rat, Cow 
<b>Immunogen</b>	Recombinant fragment within Human Serine Palmitoyltransferase (internal sequence). The exact sequence is proprietary. Database link: <a href="#">O15270</a>
<b>Positive control</b>	IHC-P: Human hepatoma tissue. WB: Mouse liver lysate; IMR32 whole cell lysate.
<b>General notes</b>	<p>The Life Science industry has been in the grips of a reproducibility crisis for a number of years. Abcam is leading the way in addressing this with our range of recombinant monoclonal antibodies and knockout edited cell lines for gold-standard validation. Please check that this product meets your needs before purchasing.</p> <p>If you have any questions, special requirements or concerns, please send us an inquiry and/or contact our Support team ahead of purchase. Recommended alternatives for this product can be found below, along with publications, customer reviews and Q&amp;As</p>

## Properties

<b>Form</b>	Liquid
<b>Storage instructions</b>	Shipped at 4°C. Store at +4°C short term (1-2 weeks). Upon delivery aliquot. Store at -20°C long term. Avoid freeze / thaw cycle.
<b>Storage buffer</b>	pH: 7.00 Preservative: 0.01% Thimerosal (merthiolate) Constituents: 78.99% PBS, 1% BSA, 20% Glycerol (glycerin, glycerine)
<b>Purity</b>	Immunogen affinity purified
<b>Clonality</b>	Polyclonal
<b>Isotype</b>	IgG

## Applications

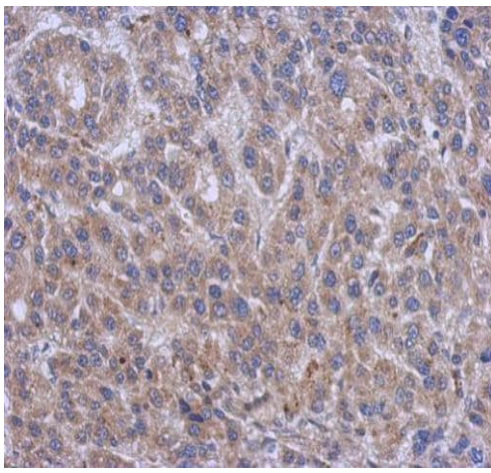
**The Abpromise guarantee** Our **Abpromise guarantee** covers the use of ab229330 in the following tested applications. The application notes include recommended starting dilutions; optimal dilutions/concentrations should be determined by the end user.

Application	Abreviews	Notes
IHC-P		1/100 - 1/1000.
WB		1/500 - 1/3000. Predicted molecular weight: 63 kDa.

## Target

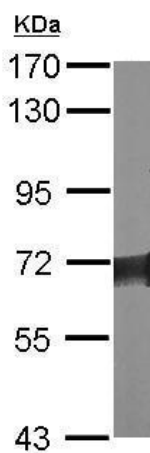
<b>Function</b>	Serine palmitoyltransferase (SPT). The heterodimer formed with LCB1/SPTLC1 constitutes the catalytic core. The composition of the serine palmitoyltransferase (SPT) complex determines the substrate preference. The SPTLC1-SPTLC2-SSSPTA complex shows a strong preference for C16-CoA substrate, while the SPTLC1-SPTLC2-SSSPTB complex displays a preference for C18-CoA substrate.
<b>Tissue specificity</b>	Widely expressed.
<b>Pathway</b>	Lipid metabolism; sphingolipid metabolism.
<b>Involvement in disease</b>	Defects in SPTLC2 are the cause of hereditary sensory and autonomic neuropathy type 1C (HSAN1C) [MIM:613640]. It is a form of hereditary sensory and autonomic neuropathy, a genetically and clinically heterogeneous group of disorders characterized by degeneration of dorsal root and autonomic ganglion cells, and by prominent sensory abnormalities with a variable degree of motor and autonomic dysfunction. The neurological phenotype is often complicated by severe infections, osteomyelitis, and amputations. HSAN1C symptoms include loss of touch and vibration in the feet, dysesthesia and severe panmodal sensory loss in the upper and lower limbs, distal lower limb sensory loss with ulceration and osteomyelitis, and distal muscle weakness.
<b>Sequence similarities</b>	Belongs to the class-II pyridoxal-phosphate-dependent aminotransferase family.
<b>Cellular localization</b>	Endoplasmic reticulum membrane.

## Images



Immunohistochemistry (Formalin/PFA-fixed paraffin-embedded sections) - Anti-Serine Palmitoyltransferase antibody (ab229330)

Paraffin-embedded human hepatoma tissue stained for Serine Palmitoyltransferase using ab229330 at 1/500 dilution in immunohistochemical analysis.

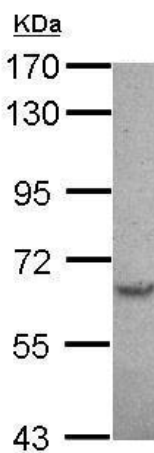


Western blot - Anti-Serine Palmitoyltransferase antibody (ab229330)

Anti-Serine Palmitoyltransferase antibody (ab229330) at 1/500 dilution + Mouse liver lysate at 50 µg

**Predicted band size:** 63 kDa

7.5% SDS PAGE gel.



Western blot - Anti-Serine Palmitoyltransferase antibody (ab229330)

Anti-Serine Palmitoyltransferase antibody (ab229330) at 1/1000 dilution + IMR32 whole cell lysate at 30 µg

**Predicted band size:** 63 kDa

7.5% SDS PAGE gel.

**Please note:** All products are "FOR RESEARCH USE ONLY. NOT FOR USE IN DIAGNOSTIC PROCEDURES"

### **Our Abpromise to you: Quality guaranteed and expert technical support**

---

- Replacement or refund for products not performing as stated on the datasheet
- Valid for 12 months from date of delivery
- Response to your inquiry within 24 hours
- We provide support in Chinese, English, French, German, Japanese and Spanish
- Extensive multi-media technical resources to help you
- We investigate all quality concerns to ensure our products perform to the highest standards

If the product does not perform as described on this datasheet, we will offer a refund or replacement. For full details of the Abpromise, please visit <https://www.abcam.com/abpromise> or contact our technical team.

### **Terms and conditions**

---

- Guarantee only valid for products bought direct from Abcam or one of our authorized distributors