

Product datasheet

Anti-Serine racemase antibody [EPR16682] ab200833

Recombinant RabMAb

[1 References](#) [4 Images](#)

Overview

| | |
|----------------------------|---|
| Product name | Anti-Serine racemase antibody [EPR16682] |
| Description | Rabbit monoclonal [EPR16682] to Serine racemase |
| Host species | Rabbit |
| Tested applications | Suitable for: WB, IP Unsuitable for: ICC/IF |
| Species reactivity | Reacts with: Human |
| Immunogen | Synthetic peptide. This information is proprietary to Abcam and/or its suppliers. |
| Positive control | WB: LNCaP, U-87 MG and HEK293 whole cell lysates; Human fetal brain lysate. IP: HEK293 and LNCaP whole cell lysates. |
| General notes | <p>This product is a recombinant monoclonal antibody, which offers several advantages including:</p> <ul style="list-style-type: none"> - High batch-to-batch consistency and reproducibility - Improved sensitivity and specificity - Long-term security of supply - Animal-free production <p>For more information see here.</p> <p>Our RabMAb[®] technology is a patented hybridoma-based technology for making rabbit monoclonal antibodies. For details on our patents, please refer to RabMAb[®] patents.</p> |

Properties

| | |
|-----------------------------|---|
| Form | Liquid |
| Storage instructions | Shipped at 4°C. Store at +4°C short term (1-2 weeks). Upon delivery aliquot. Store at -20°C long term. Avoid freeze / thaw cycle. |
| Storage buffer | pH: 7.2 Preservative: 0.01% Sodium azide Constituents: 59% PBS, 40% Glycerol (glycerin, glycerine), 0.05% BSA |
| Purity | Protein A purified |
| Clonality | Monoclonal |
| Clone number | EPR16682 |

Isotype

IgG

Applications

The Abpromise guarantee

Our **Abpromise guarantee** covers the use of ab200833 in the following tested applications.

The application notes include recommended starting dilutions; optimal dilutions/concentrations should be determined by the end user.

| Application | Abreviews | Notes |
|-------------|-----------|--|
| WB | | 1/2000. Detects a band of approximately 37 kDa (predicted molecular weight: 37 kDa). |
| IP | | 1/50. |

Application notes

Is unsuitable for ICC/IF.

Target

Function

Catalyzes the synthesis of D-serine from L-serine. D-serine is a key coagonist with glutamate at NMDA receptors. Has dehydratase activity towards both L-serine and D-serine.

Tissue specificity

Brain: expressed at high levels in hippocampus and corpus callosum, intermediate levels in substantia nigra and caudate, and low levels in amygdala, thalamus, and subthalamic nuclei. Expressed in heart, skeletal muscle, kidney and liver.

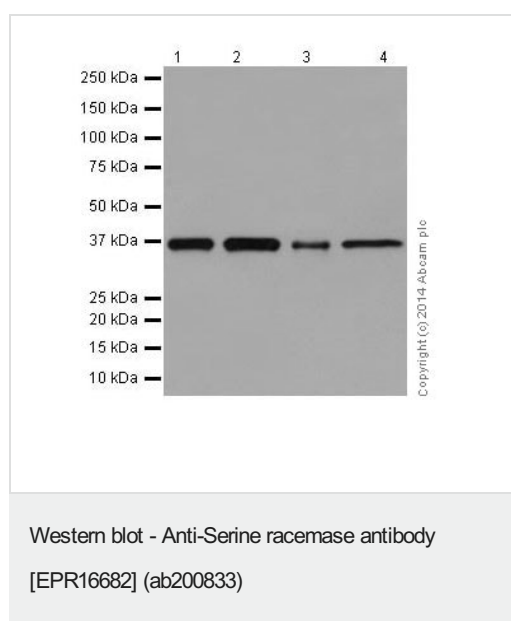
Sequence similarities

Belongs to the serine/threonine dehydratase family.

Post-translational modifications

S-nitrosylated, leading to decrease the enzyme activity.

Images



All lanes : Anti-Serine racemase antibody [EPR16682] (ab200833) at 1/5000 dilution

Lane 1 : LNCaP (Human prostate cancer cell line) whole cell lysate

Lane 2 : Human fetal brain tissue lysate

Lane 3 : U-87 MG (Human glioblastoma-astrocytoma epithelial cell line) whole cell lysate

Lane 4 : HEK-293 (Human embryonic kidney) whole cell lysate

Lysates/proteins at 20 µg per lane.

Secondary

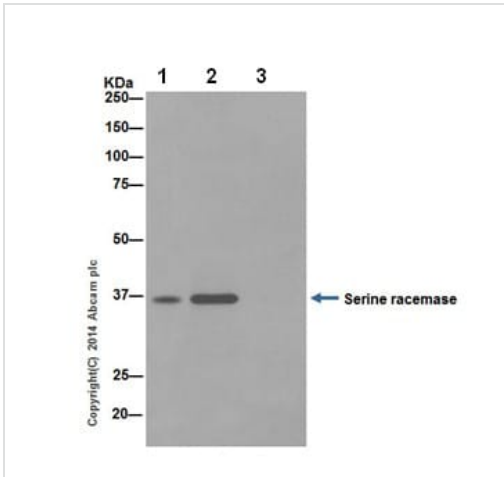
All lanes : Goat Anti-Rabbit IgG, (H+L), Peroxidase conjugated at 1/1000 dilution

Predicted band size: 37 kDa

Observed band size: 37 kDa

Exposure time: 3 minutes

Blocking/Dilution Buffer: 5% NFDm/TBST.

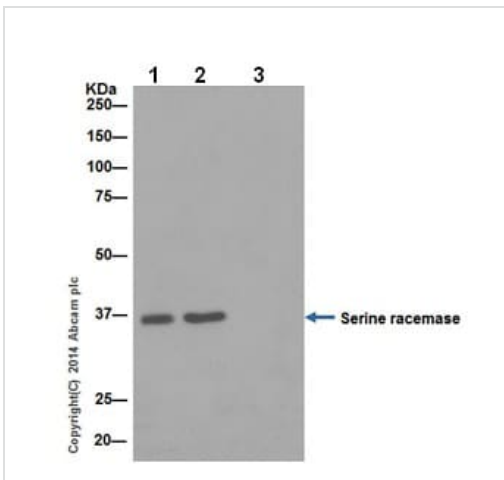


Immunoprecipitation - Anti-Serine racemase antibody [EPR16682] (ab200833)

Serine racemase was immunoprecipitated from 1mg of HEK293 (Human embryonic kidney) whole cell lysate with ab200833 at 1/50 dilution. Western blot was performed from the immunoprecipitate using ab200833 at 1/1000 dilution. Anti-Rabbit IgG (HRP), specific to the non-reduced form of IgG, was used as secondary antibody at 1/1500 dilution.

Lane 1: HEK293 whole cell lysate 10 μ g (Input). Lane 2: ab200833 IP in HEK293 whole cell lysate. Lane 3: Rabbit monoclonal IgG (**ab172730**) instead of ab200833 in HEK293 whole cell lysate. Blocking and dilution buffer and concentration: 5% NFDm/TBST.

Exposure time: 30 seconds







Immunoprecipitation - Anti-Serine racemase antibody [EPR16682] (ab200833)

Serine racemase was immunoprecipitated from 1mg of LNCaP (Human prostate cancer cell line) whole cell lysate with ab200833 at 1/50 dilution. Western blot was performed from the immunoprecipitate using ab200833 at 1/1000 dilution. Anti-Rabbit IgG (HRP), specific to the non-reduced form of IgG, was used as secondary antibody at 1/1500 dilution.

Lane 1: LNCaP whole cell lysate 10 μ g (Input). Lane 2: ab200833 IP in LNCaP whole cell lysate. Lane 3: Rabbit monoclonal IgG (**ab172730**) instead of ab200833 in LNCaP whole cell lysate. Blocking and dilution buffer and concentration: 5% NFDm/TBST.

Exposure time: 10 seconds

Why choose a recombinant antibody?

| | |
|--|--|
|  <p>Research with confidence Consistent and reproducible results</p> |  <p>Long-term and scalable supply Recombinant technology</p> |
|  <p>Success from the first experiment Confirmed specificity</p> |  <p>Ethical standards compliant Animal-free production</p> |

Anti-Serine racemase antibody [EPR16682]
(ab200833)

Please note: All products are "FOR RESEARCH USE ONLY. NOT FOR USE IN DIAGNOSTIC PROCEDURES"

Our Abpromise to you: Quality guaranteed and expert technical support

- Replacement or refund for products not performing as stated on the datasheet
- Valid for 12 months from date of delivery
- Response to your inquiry within 24 hours
- We provide support in Chinese, English, French, German, Japanese and Spanish
- Extensive multi-media technical resources to help you
- We investigate all quality concerns to ensure our products perform to the highest standards

If the product does not perform as described on this datasheet, we will offer a refund or replacement. For full details of the Abpromise, please visit <https://www.abcam.com/abpromise> or contact our technical team.

Terms and conditions

- Guarantee only valid for products bought direct from Abcam or one of our authorized distributors