




## Product datasheet

### Anti-Serotonin transporter antibody ab130130

★ ★ ★ ★ ★ [2 Abreviews](#) [11 References](#) [1 Image](#)

#### Overview

<b>Product name</b>	Anti-Serotonin transporter antibody
<b>Description</b>	Goat polyclonal to Serotonin transporter
<b>Host species</b>	Goat
<b>Tested applications</b>	<b>Suitable for:</b> ICC
<b>Species reactivity</b>	<b>Reacts with:</b> Human <b>Predicted to work with:</b> Mouse, Rat, Cow 
<b>Immunogen</b>	Synthetic peptide corresponding to Human Serotonin transporter aa 605-618 (C terminal) (Cysteine residue). (NP_001036.1) Sequence: C-KERIILKSITPETPT  Database link: <a href="#">P31645</a> <a href="#"> Run BLAST with</a> <a href="#"> Run BLAST with</a>
<b>Positive control</b>	ICC: HepG2 cells.
<b>General notes</b>	<p>The Life Science industry has been in the grips of a reproducibility crisis for a number of years. Abcam is leading the way in addressing this with our range of recombinant monoclonal antibodies and knockout edited cell lines for gold-standard validation. Please check that this product meets your needs before purchasing.</p> <p>If you have any questions, special requirements or concerns, please send us an inquiry and/or contact our Support team ahead of purchase. Recommended alternatives for this product can be found below, along with publications, customer reviews and Q&amp;As</p>

#### Properties

<b>Form</b>	Liquid
<b>Storage instructions</b>	Shipped at 4°C. Upon delivery aliquot and store at -20°C. Avoid freeze / thaw cycles.
<b>Storage buffer</b>	pH: 7.30 Preservative: 0.02% Sodium azide Constituents: 99% Tris buffered saline, 0.5% BSA
<b>Purity</b>	Immunogen affinity purified
<b>Purification notes</b>	Purified from goat serum by ammonium sulphate precipitation followed by antigen affinity

	chromatography using the immunizing peptide.
<b>Clonality</b>	Polyclonal
<b>Isotype</b>	IgG

## Applications

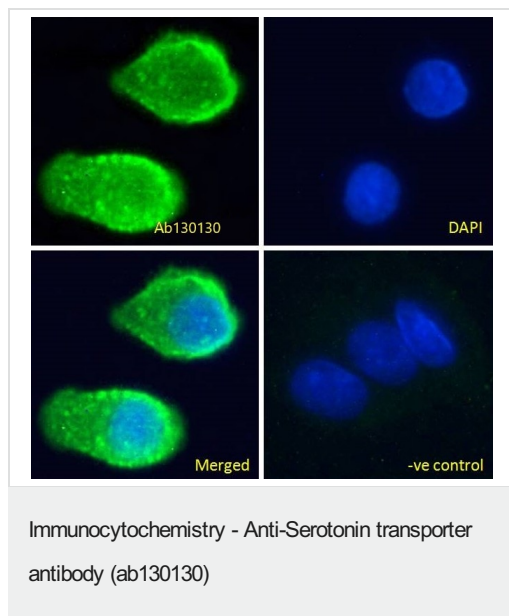
**The Abpromise guarantee** Our **Abpromise guarantee** covers the use of ab130130 in the following tested applications. The application notes include recommended starting dilutions; optimal dilutions/concentrations should be determined by the end user.

Application	Abreviews	Notes
ICC		Use at an assay dependent concentration.

## Target

<b>Function</b>	Serotonin transporter whose primary function in the central nervous system involves the regulation of serotonergic signaling via transport of serotonin molecules from the synaptic cleft back into the pre-synaptic terminal for re-utilization. Plays a key role in mediating regulation of the availability of serotonin to other receptors of serotonergic systems. Terminates the action of serotonin and recycles it in a sodium-dependent manner.
<b>Tissue specificity</b>	Expressed in platelets (at protein level).
<b>Sequence similarities</b>	Belongs to the sodium:neurotransmitter symporter (SNF) (TC 2.A.22) family. SLC6A4 subfamily.
<b>Post-translational modifications</b>	Glycosylated; modification with sialylated N-glycans is a requirement for transporters to associate with each other and to function as homooligomeric forms. Phosphorylated at Ser-611, Thr-613 and Thr-616.
<b>Cellular localization</b>	Cell membrane. Endomembrane system. Endosome membrane. Translocates from intracellular locations to the plasma membrane. Density of transporter molecules on the plasma membrane is itself regulated by serotonin.

## Images



Immunocytochemistry analysis of paraformaldehyde fixed HepG2 (human liver hepatocellular carcinoma cell line) cells labeling Serotonin transporter with ab130130 at 10 µg/mL. Cells permeabilized with 0.15% Triton. Primary incubation for 1 hour followed by Alexa Fluor® 488 secondary antibody at 2 µg/mL (green). The nuclear stain is DAPI (blue).

**Negative control:** Unimmunized goat IgG at 10 µg/mL followed by Alexa Fluor® 488 secondary antibody at 2 µg/mL.

**Please note:** All products are "FOR RESEARCH USE ONLY. NOT FOR USE IN DIAGNOSTIC PROCEDURES"

### Our Abpromise to you: Quality guaranteed and expert technical support

- Replacement or refund for products not performing as stated on the datasheet
- Valid for 12 months from date of delivery
- Response to your inquiry within 24 hours
- We provide support in Chinese, English, French, German, Japanese and Spanish
- Extensive multi-media technical resources to help you
- We investigate all quality concerns to ensure our products perform to the highest standards

If the product does not perform as described on this datasheet, we will offer a refund or replacement. For full details of the Abpromise, please visit <https://www.abcam.com/abpromise> or contact our technical team.

### Terms and conditions

- Guarantee only valid for products bought direct from Abcam or one of our authorized distributors