

## Product datasheet

# Anti-SERPINB1/PI2 antibody [EPR13299] - Membrane Vesicle Marker ab190357

Recombinant RabMAb

5 Images

### Overview

<b>Product name</b>	Anti-SERPINB1/PI2 antibody [EPR13299] - Membrane Vesicle Marker
<b>Description</b>	Rabbit monoclonal [EPR13299] to SERPINB1/PI2 - Membrane Vesicle Marker
<b>Host species</b>	Rabbit
<b>Tested applications</b>	<b>Suitable for:</b> Flow Cyt (Intra), ICC/IF, WB
<b>Species reactivity</b>	<b>Reacts with:</b> Human
<b>Immunogen</b>	Synthetic peptide. This information is proprietary to Abcam and/or its suppliers.
<b>Positive control</b>	Human fetal kidney, Human fetal lung, Human fetal liver and Human stomach lysates; HepG2, A549 and MCF7 cell lysates; U937 cells.
<b>General notes</b>	<p>This product is a recombinant monoclonal antibody, which offers several advantages including:</p> <ul style="list-style-type: none"> <li>- High batch-to-batch consistency and reproducibility</li> <li>- Improved sensitivity and specificity</li> <li>- Long-term security of supply</li> <li>- Animal-free production</li> </ul> <p>For more information <a href="#">see here</a>.</p> <p>Our RabMAb<sup>®</sup> technology is a patented hybridoma-based technology for making rabbit monoclonal antibodies. For details on our patents, please refer to <a href="#">RabMAb<sup>®</sup> patents</a>.</p>

### Properties

<b>Form</b>	Liquid
<b>Storage instructions</b>	Shipped at 4°C. Store at +4°C short term (1-2 weeks). Upon delivery aliquot. Store at -20°C long term. Avoid freeze / thaw cycle.
<b>Storage buffer</b>	<p>pH: 7.2</p> <p>Preservative: 0.01% Sodium azide</p> <p>Constituents: 59% PBS, 40% Glycerol (glycerin, glycerine), 0.05% BSA</p>
<b>Purity</b>	Protein A purified
<b>Clonality</b>	Monoclonal
<b>Clone number</b>	EPR13299

Isotype

IgG

## Applications

### The Abpromise guarantee

Our **Abpromise guarantee** covers the use of ab190357 in the following tested applications.

The application notes include recommended starting dilutions; optimal dilutions/concentrations should be determined by the end user.

Application	Abreviews	Notes
Flow Cyt (Intra)		1/210. <b>ab172730</b> - Rabbit monoclonal IgG, is suitable for use as an isotype control with this antibody.
ICC/IF		1/100.
WB		1/100 - 1/10000. Detects a band of approximately 43 kDa (predicted molecular weight: 43 kDa).

## Target

### Function

Regulates the activity of the neutrophil proteases elastase, cathepsin G, proteinase-3, chymase, chymotrypsin, and kallikrein-3.

### Sequence similarities

Belongs to the serpin family. Ov-serpin subfamily.

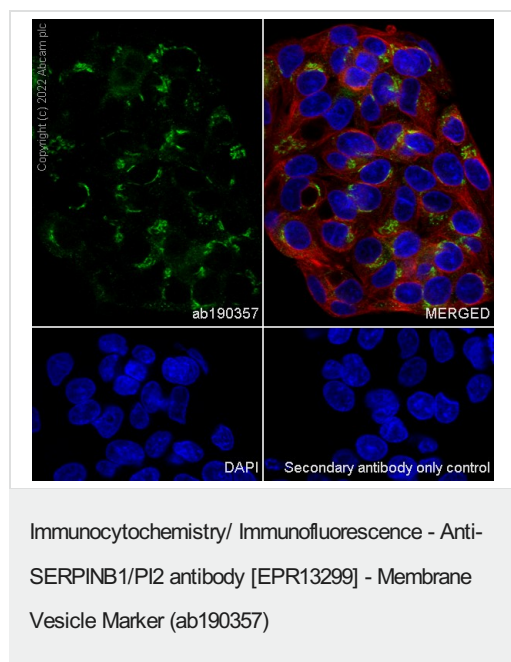
### Domain

Reactive bond 1 is specific for reaction with chymotrypsin-like protease such as cathepsin G, chymotrypsin or chymase, while reactive bond 2 is specific for reaction with elastase-like protease such as neutrophil elastase, proteinase-3, pancreatic elastase or PSA.

### Cellular localization

Cytoplasm.

## Images

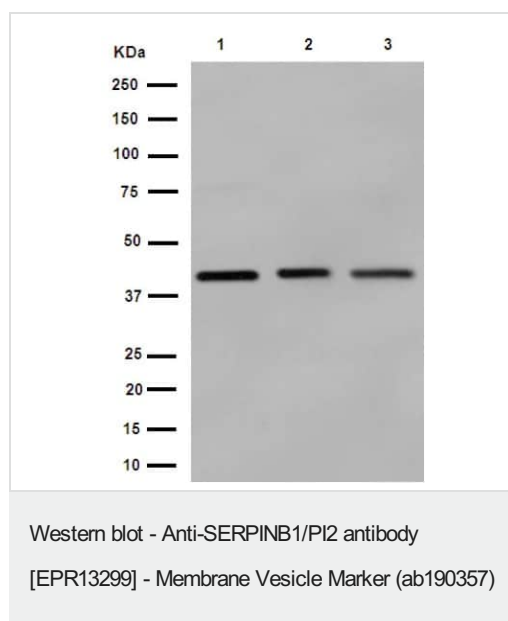


Immunofluorescent analysis of 4% paraformaldehyde fixed and permeabilized with 0.1% Triton X-100 HepG2 (human hepatocellular carcinoma epithelial cell) cells labelling SERPINB1/PI2 with ab190357 at 1/100 dilution (10 µg/ml), followed by AlexaFluor®488 Goat anti-Rabbit secondary antibody (**ab150077**) at 1/1000 dilution (2 µg/ml) (green). Confocal image showing cytoplasmic staining in HepG2 cell line. Image was taken with a confocal microscope (Leica-Microsystems, TCS SP8). Cells were counterstained with Ab195889 Anti-alpha Tubulin antibody [DM1A] - Microtubule Marker (Alexa Fluor® 594) 1/200 (2.5 µg/ml). DAPI was used as nuclear counterstain.

The negative controls are as follows:

-ve control 1: ab190357 at 1/100 dilution (10 µg/ml), followed by AlexaFluor®488 Goat anti-Rabbit secondary antibody (**ab150077**) at 1/1000 dilution (2 µg/ml).

-ve control 2: AlexaFluor®488 Goat anti-Rabbit secondary antibody ([ab150077](#)) at 1/1000 dilution (2 µg/ml).



**All lanes :** Anti-SERPINB1/PI2 antibody [EPR13299] - Membrane Vesicle Marker (ab190357) at 1/5000 dilution

**Lane 1 :** HepG2 cell lysate

**Lane 2 :** A549 cell lysate

**Lane 3 :** MCF7 cell lysate

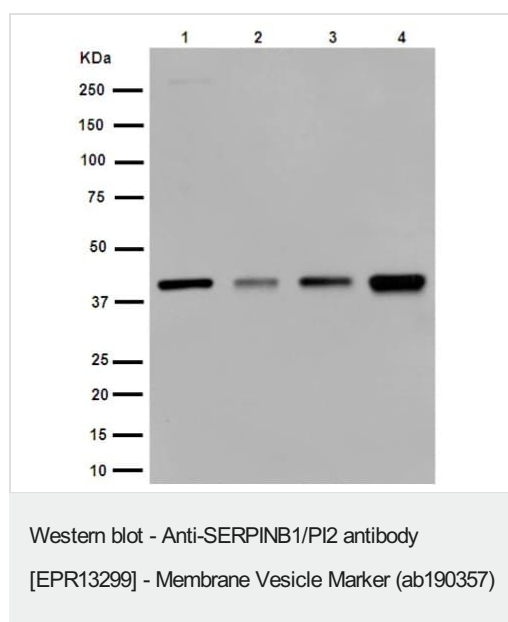
Lysates/proteins at 20 µg per lane.

#### Secondary

**All lanes :** Goat Anti-Rabbit IgG, (H+L), Peroxidase conjugated at 1/1000 dilution

**Predicted band size:** 43 kDa

**Observed band size:** 43 kDa



**All lanes :** Anti-SERPINB1/PI2 antibody [EPR13299] - Membrane Vesicle Marker (ab190357) at 1/5000 dilution

**Lane 1 :** Human fetal kidney lysate

**Lane 2 :** Human fetal lung lysate

**Lane 3 :** Human fetal liver lysate

**Lane 4 :** Human stomach lysate

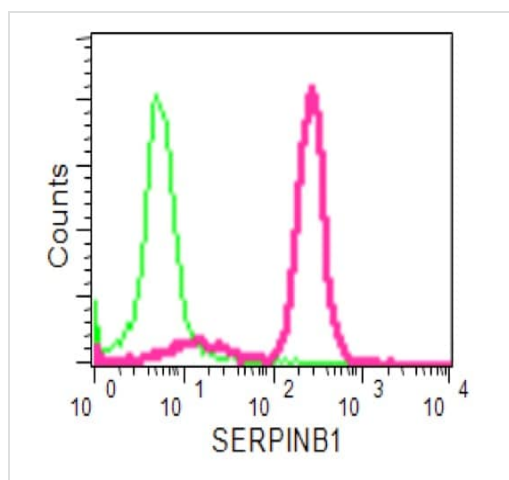
Lysates/proteins at 20 µg per lane.

#### Secondary

**All lanes :** Anti-Rabbit IgG (HRP), specific to the non-reduced form of IgG at 1/1000 dilution

**Predicted band size:** 43 kDa

**Observed band size:** 43 kDa



Intracellular flow cytometrical analysis of U937 cells labeling SERPINB1/PI2 with ab190357 at 1/210 (red) compared to a Rabbit monoclonal IgG as an isotope control (green). FITC-conjugated goat-anti-rabbit secondary antibodies were used for the analysis.

Flow Cytometry (Intracellular) - Anti-SERPINB1/PI2 antibody [EPR13299] - Membrane Vesicle Marker (ab190357)

#### Why choose a recombinant antibody?



**Research with confidence**  
Consistent and reproducible results



**Long-term and scalable supply**  
Recombinant technology



**Success from the first experiment**  
Confirmed specificity



**Ethical standards compliant**  
Animal-free production

Anti-SERPINB1/PI2 antibody [EPR13299] - Membrane Vesicle Marker (ab190357)

**Please note:** All products are "FOR RESEARCH USE ONLY. NOT FOR USE IN DIAGNOSTIC PROCEDURES"

#### Our Abpromise to you: Quality guaranteed and expert technical support

- Replacement or refund for products not performing as stated on the datasheet
- Valid for 12 months from date of delivery
- Response to your inquiry within 24 hours

- We provide support in Chinese, English, French, German, Japanese and Spanish
- Extensive multi-media technical resources to help you
- We investigate all quality concerns to ensure our products perform to the highest standards

If the product does not perform as described on this datasheet, we will offer a refund or replacement. For full details of the Abpromise, please visit <https://www.abcam.com/abpromise> or contact our technical team.

#### **Terms and conditions**

---

- Guarantee only valid for products bought direct from Abcam or one of our authorized distributors