


Product datasheet

Anti-SerpinB6/CAP antibody ab233229

[1 References](#) [8 Images](#)

Overview

Product name	Anti-SerpinB6/CAP antibody
Description	Rabbit polyclonal to SerpinB6/CAP
Host species	Rabbit
Tested applications	Suitable for: WB, IHC-P
Species reactivity	Reacts with: Human Predicted to work with: Cynomolgus monkey, Orangutan 
Immunogen	Recombinant full length protein (His-T7-tag) corresponding to Human SerpinB6/CAP aa 1 to the C-terminus. (Expressed in E.coli). Database link: P35237 Run BLAST with Run BLAST with
Positive control	WB: Recombinant human SerpinB6/CAP protein; Human lung lysate. IHC-P: Human prostate, prostate cancer, glioma, kidney, cerebrum and liver tissues.
General notes	<p>The Life Science industry has been in the grips of a reproducibility crisis for a number of years. Abcam is leading the way in addressing this with our range of recombinant monoclonal antibodies and knockout edited cell lines for gold-standard validation. Please check that this product meets your needs before purchasing.</p> <p>If you have any questions, special requirements or concerns, please send us an inquiry and/or contact our Support team ahead of purchase. Recommended alternatives for this product can be found below, along with publications, customer reviews and Q&As</p>

Properties

Form	Liquid
Storage instructions	Shipped at 4°C. Store at +4°C short term (1-2 weeks). Upon delivery aliquot. Store at -20°C long term. Avoid freeze / thaw cycle.
Storage buffer	pH: 7.40 Preservative: 0.02% Sodium azide Constituents: 44.12% PBS, 55.77% Glycerol (glycerin, glycerine)
Purity	Immunogen affinity purified
Purification notes	ab233229 was purified by antigen-specific affinity chromatography followed by Protein A affinity chromatography.

Clonality	Polyclonal
Isotype	IgG

Applications

The Abpromise guarantee Our **Abpromise guarantee** covers the use of ab233229 in the following tested applications.

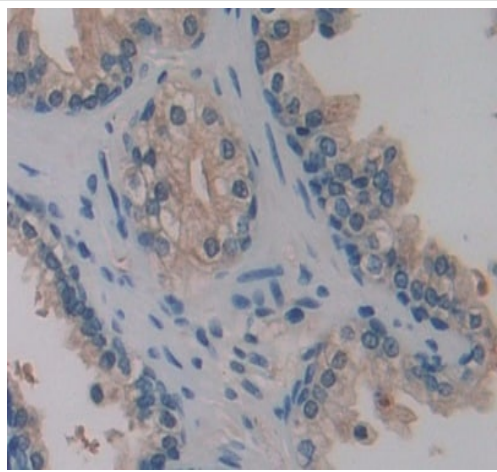
The application notes include recommended starting dilutions; optimal dilutions/concentrations should be determined by the end user.

Application	Abreviews	Notes
WB		Use a concentration of 0.5 - 5 µg/ml. Predicted molecular weight: 43 kDa.
IHC-P		Use a concentration of 5 - 20 µg/ml.

Target

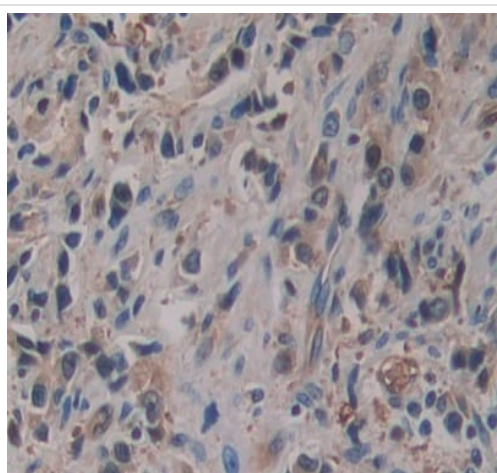
Function	May be involved in the regulation of serine proteinases present in the brain or extravasated from the blood (By similarity). Inhibitor of cathepsin G, kallikrein-8 and thrombin. May play an important role in the inner ear in the protection against leakage of lysosomal content during stress and loss of this protection results in cell death and sensorineural hearing loss.
Tissue specificity	Expressed in keratinocytes (at protein level). Highest levels in skeletal muscle. Also found in placenta, cardiac muscle, lung, liver, kidney and pancreas. Expressed in the inner ear hair cells. Expressed abundantly by normal mast cells in different tissues and by mast cells in mastocytoma lesions.
Involvement in disease	Defects in SERPINB6 are the cause of deafness autosomal recessive type 91 (DFNB91) [MIM:613453]. It is a form of non-syndromic deafness characterized by progressive and age-dependent sensorineural hearing loss. Vestibular function is normal.
Sequence similarities	Belongs to the serpin family. Ov-serpin subfamily.
Cellular localization	Cytoplasm.

Images



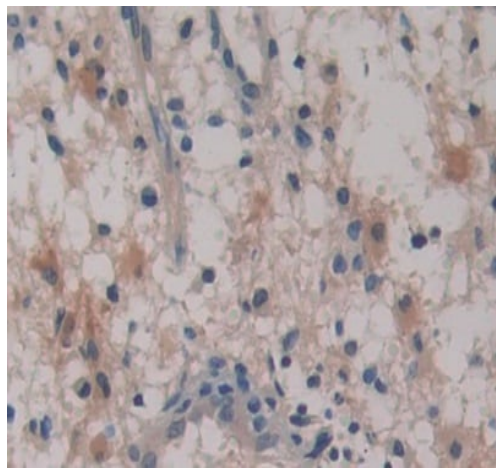
Paraffin-embedded human prostate tissue stained for SerpinB6/CAP using ab233229 at 20 $\mu\text{g}/\text{ml}$ in immunohistochemical analysis. DAB staining.

Immunohistochemistry (Formalin/PFA-fixed paraffin-embedded sections) - Anti-SerpinB6/CAP antibody (ab233229)



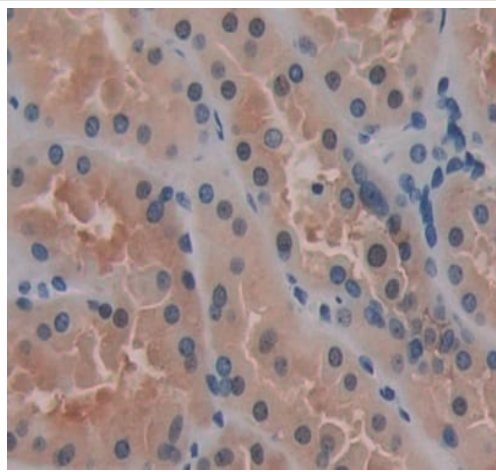
Paraffin-embedded human prostate cancer tissue stained for SerpinB6/CAP using ab233229 at 20 $\mu\text{g}/\text{ml}$ in immunohistochemical analysis. DAB staining.

Immunohistochemistry (Formalin/PFA-fixed paraffin-embedded sections) - Anti-SerpinB6/CAP antibody (ab233229)



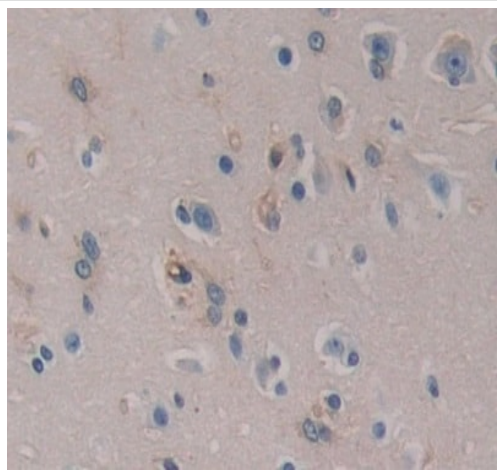
Paraffin-embedded human glioma tissue stained for SerpinB6/CAP using ab233229 at 20 $\mu\text{g/ml}$ in immunohistochemical analysis. DAB staining.

Immunohistochemistry (Formalin/PFA-fixed paraffin-embedded sections) - Anti-SerpinB6/CAP antibody (ab233229)



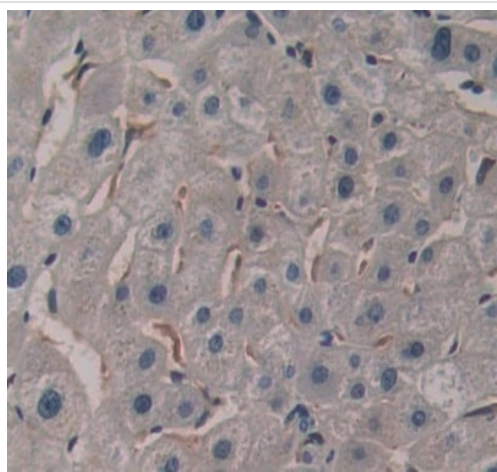
Paraffin-embedded human kidney tissue stained for SerpinB6/CAP using ab233229 at 20 $\mu\text{g/ml}$ in immunohistochemical analysis. DAB staining.

Immunohistochemistry (Formalin/PFA-fixed paraffin-embedded sections) - Anti-SerpinB6/CAP antibody (ab233229)



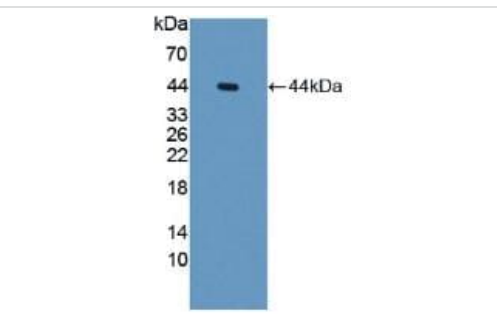
Immunohistochemistry (Formalin/PFA-fixed paraffin-embedded sections) - Anti-SerpinB6/CAP antibody (ab233229)

Paraffin-embedded human cerebrum tissue stained for SerpinB6/CAP using ab233229 at 20 µg/ml in immunohistochemical analysis. DAB staining.



Immunohistochemistry (Formalin/PFA-fixed paraffin-embedded sections) - Anti-SerpinB6/CAP antibody (ab233229)

Paraffin-embedded human liver tissue stained for SerpinB6/CAP using ab233229 at 20 µg/ml in immunohistochemical analysis. DAB staining.



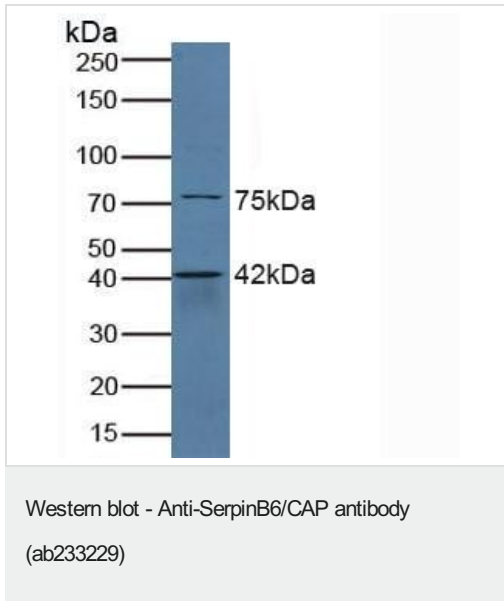
Western blot - Anti-SerpinB6/CAP antibody (ab233229)

Anti-SerpinB6/CAP antibody (ab233229) at 3 µg/ml + Recombinant human SerpinB6/CAP protein

Secondary

HRP-Linked Guinea pig Anti-Rabbit at 1/2000 dilution

Predicted band size: 43 kDa



Anti-SerpinB6/CAP antibody (ab233229) at 3 µg/ml + Human lung lysate

Secondary

HRP-Linked Guinea pig Anti-Rabbit at 1/2000 dilution

Predicted band size: 43 kDa

Please note: All products are "FOR RESEARCH USE ONLY. NOT FOR USE IN DIAGNOSTIC PROCEDURES"

Our Abpromise to you: Quality guaranteed and expert technical support

- Replacement or refund for products not performing as stated on the datasheet
- Valid for 12 months from date of delivery
- Response to your inquiry within 24 hours
- We provide support in Chinese, English, French, German, Japanese and Spanish
- Extensive multi-media technical resources to help you
- We investigate all quality concerns to ensure our products perform to the highest standards

If the product does not perform as described on this datasheet, we will offer a refund or replacement. For full details of the Abpromise, please visit <https://www.abcam.com/abpromise> or contact our technical team.

Terms and conditions

- Guarantee only valid for products bought direct from Abcam or one of our authorized distributors