

Product datasheet

Anti-SERPINE2/PN-1 antibody [EPR8776] ab134905

Recombinant RabMAb

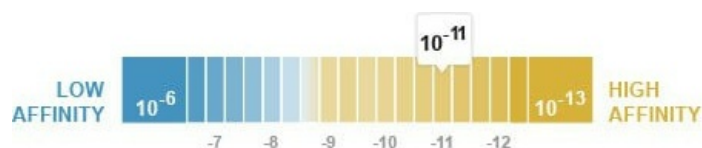
[1 References](#) [3 Images](#)

Overview

Product name	Anti-SERPINE2/PN-1 antibody [EPR8776]
Description	Rabbit monoclonal [EPR8776] to SERPINE2/PN-1
Host species	Rabbit
Tested applications	Suitable for: WB Unsuitable for: Flow Cyt, ICC/IF, IHC-P or IP
Species reactivity	Reacts with: Rat, Human
Immunogen	Synthetic peptide within Human SERPINE2/PN-1 aa 300-400. The exact sequence is proprietary.
Positive control	C6, Human fetal brain, and Human oligodendrogloma cell lysates.
General notes	<p>This product is a recombinant monoclonal antibody, which offers several advantages including:</p> <ul style="list-style-type: none"> - High batch-to-batch consistency and reproducibility - Improved sensitivity and specificity - Long-term security of supply - Animal-free production <p>For more information see here.</p> <p>Our RabMAb[®] technology is a patented hybridoma-based technology for making rabbit monoclonal antibodies. For details on our patents, please refer to RabMAb[®] patents.</p> <p>Mouse: We have preliminary internal testing data to indicate this antibody may not react with this species. Please contact us for more information.</p>

Properties

Form	Liquid
Storage instructions	Shipped at 4°C. Store at -20°C.
Dissociation constant (K_D)	K _D = 1.80 x 10 ⁻¹¹ M



[Learn more about K_D](#)

Storage buffer	pH: 7.2 Preservative: 0.01% Sodium azide Constituents: 9% PBS, 40% Glycerol (glycerin, glycerine), 0.05% BSA, 50% Tissue culture supernatant
Purity	Protein A purified
Clonality	Monoclonal
Clone number	EPR8776
Isotype	IgG

Applications

The Abpromise guarantee Our **Abpromise guarantee** covers the use of ab134905 in the following tested applications. The application notes include recommended starting dilutions; optimal dilutions/concentrations should be determined by the end user.

Application	Abreviews	Notes
WB		1/1000 - 1/10000. Predicted molecular weight: 44 kDa.

Application notes Is unsuitable for Flow Cyt, ICC/IF, IHC-P or IP.

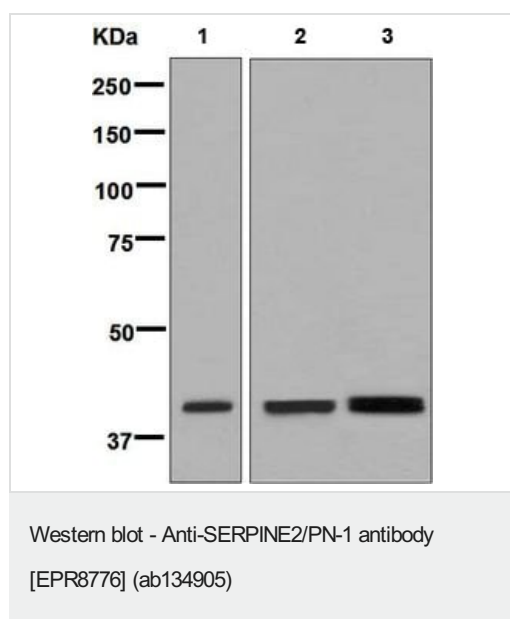
Target

Function Serine protease inhibitor with activity toward thrombin, trypsin, and urokinase. Promotes neurite extension by inhibiting thrombin. Binds heparin.

Sequence similarities Belongs to the serpin family.

Cellular localization Secreted > extracellular space.

Images



All lanes : Anti-SERPINE2/PN-1 antibody [EPR8776] (ab134905) at 1/1000 dilution

Lane 1 : C6 cell lysate

Lane 2 : Human fetal brain tissue lysate

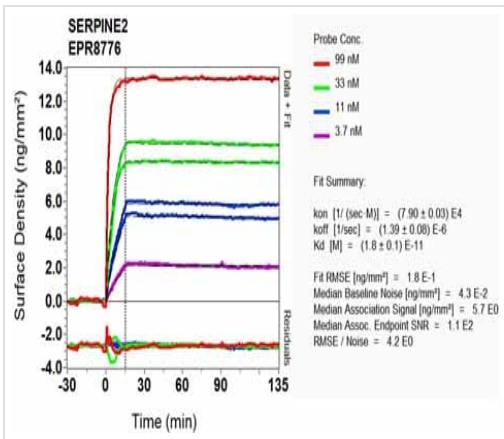
Lane 3 : Human oligodendrogloma cell lysate

Lysates/proteins at 10 µg per lane.

Secondary

All lanes : Goat anti-rabbit HRP at 1/2000 dilution

Predicted band size: 44 kDa



OI-RD Scanning - Anti-SERPINE2/PN-1 antibody
 [EPR8776] (ab134905)

Equilibrium disassociation constant (K_D)

Learn more about K_D

[Click here to learn more about \$K_D\$](#)

Why choose a recombinant antibody?

Research with confidence
 Consistent and reproducible results

Long-term and scalable supply
 Recombinant technology

Success from the first experiment
 Confirmed specificity

Ethical standards compliant
 Animal-free production

Anti-SERPINE2/PN-1 antibody [EPR8776]
 (ab134905)

Please note: All products are "FOR RESEARCH USE ONLY. NOT FOR USE IN DIAGNOSTIC PROCEDURES"

Our Abpromise to you: Quality guaranteed and expert technical support

- Replacement or refund for products not performing as stated on the datasheet
- Valid for 12 months from date of delivery
- Response to your inquiry within 24 hours
- We provide support in Chinese, English, French, German, Japanese and Spanish
- Extensive multi-media technical resources to help you
- We investigate all quality concerns to ensure our products perform to the highest standards

If the product does not perform as described on this datasheet, we will offer a refund or replacement. For full details of the Abpromise, please visit <https://www.abcam.com/abpromise> or contact our technical team.

Terms and conditions

- Guarantee only valid for products bought direct from Abcam or one of our authorized distributors