

## Product datasheet

# Anti-Serum Amyloid P/SAP antibody [14B4] ab27313

★★★★★ [2 Abreviews](#) [5 References](#) [2 Images](#)

### Overview

---

<b>Product name</b>	Anti-Serum Amyloid P/SAP antibody [14B4]
<b>Description</b>	Mouse monoclonal [14B4] to Serum Amyloid P/SAP
<b>Host species</b>	Mouse
<b>Specificity</b>	None detected so far.
<b>Tested applications</b>	<b>Suitable for:</b> Sandwich ELISA, WB, ELISA
<b>Species reactivity</b>	<b>Reacts with:</b> Human
<b>Immunogen</b>	Full length native protein (purified) corresponding to Human Serum Amyloid P/SAP. Database link: <a href="#">P02743</a>
<b>General notes</b>	<p>This antibody reacts with Serum Amyloid P / SAP coated on microtitre plates.</p> <p>The Life Science industry has been in the grips of a reproducibility crisis for a number of years. Abcam is leading the way in addressing this with our range of recombinant monoclonal antibodies and knockout edited cell lines for gold-standard validation. Please check that this product meets your needs before purchasing.</p> <p>If you have any questions, special requirements or concerns, please send us an inquiry and/or contact our Support team ahead of purchase. Recommended alternatives for this product can be found below, along with publications, customer reviews and Q&amp;As</p>

### Properties

---

<b>Form</b>	Liquid
<b>Storage instructions</b>	Shipped at 4°C. Store at +4°C.
<b>Storage buffer</b>	pH: 7.40 Preservative: 0.097% Sodium azide Constituents: 0.0268% PBS, 2.9% Sodium chloride
<b>Purity</b>	Protein A purified
<b>Primary antibody notes</b>	This antibody reacts with serum Amyloid P coated on microtitre plates. In western blots of SDS-PAGE separated serum proteins, the antibody reacts with a high molecular weight aggregate of serum Amyloid P under non reducing conditions, and reacts strongly with a 25 kDa band of the single subunits under reducing SDS-PAGE conditions.
<b>Clonality</b>	Monoclonal

<b>Clone number</b>	14B4
<b>Myeloma</b>	x63-Ag8.653
<b>Isotype</b>	IgG1
<b>Light chain type</b>	kappa

## Applications

**The Abpromise guarantee** Our **Abpromise guarantee** covers the use of ab27313 in the following tested applications.

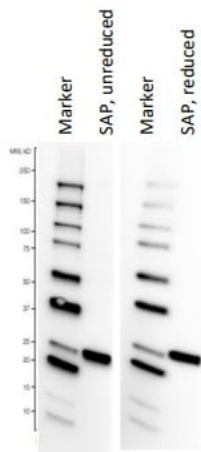
The application notes include recommended starting dilutions; optimal dilutions/concentrations should be determined by the end user.

Application	Abreviews	Notes
<b>Sandwich ELISA</b>		Use at an assay dependent concentration. Use as Capture antibody with recommended pair. See Abreview submitted by Jennifer Webster for details.
<b>WB</b>	★★★★★ (1)	Use at an assay dependent concentration.
<b>ELISA</b>	★★★★★ (1)	Use at an assay dependent concentration.

## Target

<b>Function</b>	Can interact with DNA and histones and may scavenge nuclear material released from damaged circulating cells. May also function as a calcium-dependent lectin.
<b>Tissue specificity</b>	Found in serum and urine.
<b>Involvement in disease</b>	Note=SAP is a precursor of amyloid component P which is found in basement membrane and associated with amyloid deposits.
<b>Sequence similarities</b>	Belongs to the pentaxin family. Contains 1 pentaxin domain.
<b>Post-translational modifications</b>	N-glycosylated with a complex biantennary oligosaccharide chain with a sialic acid at the end (disialo-SAP). Monosialo-SAP as well as asialo-SAP are also detected (PubMed:15174148).
<b>Cellular localization</b>	Secreted.

## Images



Western blot - Anti-Serum Amyloid P/SAP antibody [14B4] (ab27313)

**Lanes 2 & 4 :** Anti-Serum Amyloid P/SAP antibody [14B4] (ab27313) at 2 µg/ml

**Lanes 1 & 3 :** molecular weight market

**Lane 2 :** human serum amyloid P component, unreduced at 0.2 µg

**Lane 4 :** human serum amyloid P component, reduced at 0.2 µg

**Exposure time:** 60 seconds

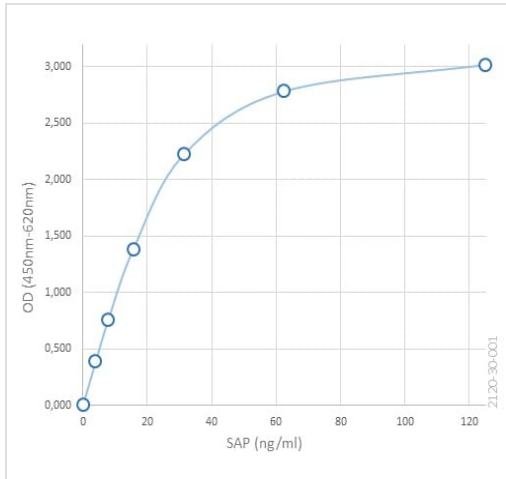
In each well of a Novex Wedge well 4-20% Tris-Glycine gel, 0.2 µg of human serum amyloid P component was loaded in a volume of 10 µL of either non-reducing or reducing loading buffer.

A nitrocellulose membrane was used for blotting. The membrane was blocked overnight in 50 mL of PBS supplemented with 0.1% BSA and 0.1% Tween 20.

The nitrocellulose membrane was incubated for 1 h with 20 mL of 2 µg/mL ab27313 Anti Serum Amyloid P component (SAP), human diluted in PBS supplemented with 0.1% BSA and 0.1% Tween 20.

After washing for 3 ×5 min in 50 mL PBS supplemented with 0.1% BSA and 0.1% Tween 20, the membrane was incubated for 1 h with rabbit anti mouse IgG diluted 1: 2000 and Streptactin-HRP diluted 1:2000 in 10 ml of PBS supplemented with 0.1% BSA and 0.1% Tween 20.

After another washing for 3 ×5 min in 50 mL PBS supplemented with 0.1% BSA and 0.1% Tween 20, the membrane was incubated for 5 min in the dark with Clarity Western ECL.



A direct ELISA was performed using SAP as the coating antigen and ab27313 at a concentration of 0.25 $\mu$ g/mL as the capture antibody

ELISA - Anti-Serum Amyloid P/SAP antibody [14B4]  
(ab27313)

**Please note:** All products are "FOR RESEARCH USE ONLY. NOT FOR USE IN DIAGNOSTIC PROCEDURES"

### Our Abpromise to you: Quality guaranteed and expert technical support

- Replacement or refund for products not performing as stated on the datasheet
- Valid for 12 months from date of delivery
- Response to your inquiry within 24 hours
- We provide support in Chinese, English, French, German, Japanese and Spanish
- Extensive multi-media technical resources to help you
- We investigate all quality concerns to ensure our products perform to the highest standards

If the product does not perform as described on this datasheet, we will offer a refund or replacement. For full details of the Abpromise, please visit <https://www.abcam.com/abpromise> or contact our technical team.

### Terms and conditions

- Guarantee only valid for products bought direct from Abcam or one of our authorized distributors