


Product datasheet

Anti-SET/TAF-I antibody [EPR12972(B)] α b176567

Recombinant RabMAb

[2 References](#) [4 Images](#)

Overview

Product name	Anti-SET/TAF-I antibody [EPR12972(B)]
Description	Rabbit monoclonal [EPR12972(B)] to SET/TAF-I
Host species	Rabbit
Tested applications	Suitable for: IP, Flow Cyt (Intra), WB Unsuitable for: ICC/IF or IHC-P
Species reactivity	Reacts with: Human Predicted to work with: Mouse, Rat 
Immunogen	Synthetic peptide within Human SET/TAF-I aa 1-100 (Cysteine residue). The exact sequence is proprietary. Database link: Q01105
Positive control	Jurkat, 293T, HepG2 and HeLa whole cell lysate (ab150035); Jurkat cells.
General notes	This product is a recombinant monoclonal antibody, which offers several advantages including: <ul style="list-style-type: none"> - High batch-to-batch consistency and reproducibility - Improved sensitivity and specificity - Long-term security of supply - Animal-free production For more information see here . Our RabMAb [®] technology is a patented hybridoma-based technology for making rabbit monoclonal antibodies. For details on our patents, please refer to RabMAb[®] patents .

Properties

Form	Liquid
Storage instructions	Shipped at 4°C. Store at +4°C short term (1-2 weeks). Upon delivery aliquot. Store at -20°C long term. Avoid freeze / thaw cycle.
Storage buffer	pH: 7.20 Preservative: 0.01% Sodium azide Constituents: 9% PBS, 40% Glycerol (glycerin, glycerine), 0.05% BSA, 50% Tissue culture supernatant
Purity	Tissue culture supernatant

Clonality	Monoclonal
Clone number	EPR12972(B)
Isotype	IgG

Applications

The Abpromise guarantee Our **Abpromise guarantee** covers the use of ab176567 in the following tested applications. The application notes include recommended starting dilutions; optimal dilutions/concentrations should be determined by the end user.

Application	Abreviews	Notes
IP		1/10 - 1/100.
Flow Cyt (Intra)		1/10 - 1/100. ab172730 - Rabbit monoclonal IgG, is suitable for use as an isotype control with this antibody.
WB		1/10000 - 1/50000. Predicted molecular weight: 33 kDa.

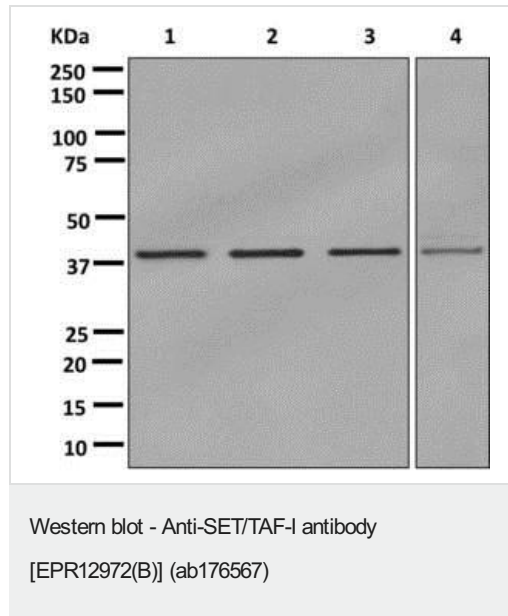
Application notes Is unsuitable for ICC/IF or IHC-P.

Target

Function	Multitasking protein, involved in apoptosis, transcription, nucleosome assembly and histone binding. Isoform 2 anti-apoptotic activity is mediated by inhibition of the GZMA-activated DNase, NME1. In the course of cytotoxic T-lymphocyte (CTL)-induced apoptosis, GZMA cleaves SET, disrupting its binding to NME1 and releasing NME1 inhibition. Isoform 1 and isoform 2 are potent inhibitors of protein phosphatase 2A. Isoform 1 and isoform 2 inhibit EP300/CREBBP and PCAF-mediated acetylation of histones (HAT) and nucleosomes, most probably by masking the accessibility of lysines of histones to the acetylases. The predominant target for inhibition is histone H4. HAT inhibition leads to silencing of HAT-dependent transcription and prevents active demethylation of DNA. Both isoforms stimulate DNA replication of the adenovirus genome complexed with viral core proteins; however, isoform 2 specific activity is higher.
Tissue specificity	Widely expressed. Low levels in quiescent cells during serum starvation, contact inhibition or differentiation. Highly expressed in Wilms' tumor.
Involvement in disease	Note=A chromosomal aberration involving SET is found in some cases of acute undifferentiated leukemia (AUL). Translocation t(6;9)(q21;q34.1) with NUP214/CAN.
Sequence similarities	Belongs to the nucleosome assembly protein (NAP) family.
Domain	The C-terminal acidic domain mediates the inhibition of histone acetyltransferases and is required for the DNA replication stimulatory activity.
Post-translational modifications	Isoform 2 is phosphorylated on Ser-15 and Thr-23. Isoform 2 is acetylated on Lys-11. Some glutamate residues are glycosylated by TTLL8. This modification occurs exclusively on glutamate residues and results in a glycine chain on the gamma-carboxyl group. N-terminus of isoform 1 is methylated by METTL11A/NTM1. Mainly trimethylated.
Cellular localization	Cytoplasm > cytosol. Endoplasmic reticulum. Nucleus > nucleoplasm. In the cytoplasm, found both in the cytosol and associated with the endoplasmic reticulum. Following CTL attack, moves

rapidly to the nucleus, where it is found in the nucleoplasm, avoiding the nucleolus. Similar translocation to the nucleus is also observed for lymphocyte-activated killer cells after the addition of calcium. The SET complex is associated with the endoplasmic reticulum.

Images



All lanes : Anti-SET/TAF-I antibody [EPR12972(B)] (ab176567) at 1/10000 dilution

Lane 1 : Jurkat cell lysate

Lane 2 : 293T (Human embryonic kidney epithelial cell) cell lysate

Lane 3 : HepG2 cell lysate

Lane 4 : HeLa cell lysate

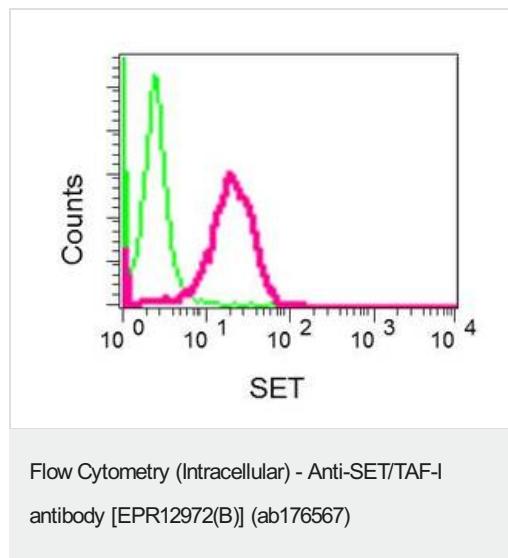
Lysates/proteins at 10 µg per lane.

Secondary

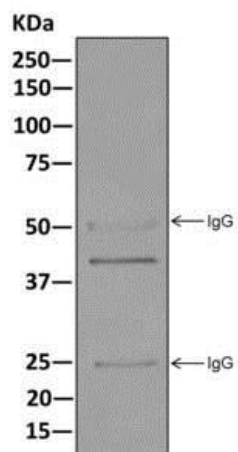
All lanes : Goat anti-rabbit HRP at 1/2000 dilution

Developed using the ECL technique.

Predicted band size: 33 kDa



Intracellular Flow Cytometry analysis of permeabilized Jurkat cells labeling SET/TAF-I (red) with ab176567 at a 1/10 dilution, or negative control rabbit IgG (green)



Western blot analysis on immunoprecipitation pellet from HeLa cell lysate labeling SET/TAF-I with ab176567 at 1/10 dilution.

Immunoprecipitation - Anti-SET/TAF-I antibody
[EPR12972(B)] (ab176567)

Why choose a
recombinant antibody?



Research with confidence
Consistent and reproducible results



Long-term and scalable supply
Recombinant technology



Success from the first experiment
Confirmed specificity



Ethical standards compliant
Animal-free production

Anti-SET/TAF-I antibody [EPR12972(B)] (ab176567)

Please note: All products are "FOR RESEARCH USE ONLY. NOT FOR USE IN DIAGNOSTIC PROCEDURES"

Our Abpromise to you: Quality guaranteed and expert technical support

- Replacement or refund for products not performing as stated on the datasheet
- Valid for 12 months from date of delivery
- Response to your inquiry within 24 hours
- We provide support in Chinese, English, French, German, Japanese and Spanish

- Extensive multi-media technical resources to help you
- We investigate all quality concerns to ensure our products perform to the highest standards

If the product does not perform as described on this datasheet, we will offer a refund or replacement. For full details of the Abpromise, please visit <https://www.abcam.com/abpromise> or contact our technical team.

Terms and conditions

- Guarantee only valid for products bought direct from Abcam or one of our authorized distributors