

## Product datasheet

### Anti-SF3B3 antibody [EPR18441] ab209403

Recombinant **RabMAb**

[1 References](#) [13 Images](#)

#### Overview

<b>Product name</b>	Anti-SF3B3 antibody [EPR18441]
<b>Description</b>	Rabbit monoclonal [EPR18441] to SF3B3
<b>Host species</b>	Rabbit
<b>Tested applications</b>	<b>Suitable for:</b> WB, IHC-P, ICC/IF, IP
<b>Species reactivity</b>	<b>Reacts with:</b> Mouse, Rat, Human
<b>Immunogen</b>	Synthetic peptide. This information is proprietary to Abcam and/or its suppliers.
<b>Positive control</b>	WB: HeLa, Jurkat, C6, RAW 264.7, PC-12 and NIH/3T3 whole cell lysates; Human fetal liver and fetal heart lysates; Mouse brain, kidney and spleen lysates; Rat kidney and spleen lysates. IHC-P: Human colon, Human breast cancer (ER+) and Human breast cancer (ER-) tissues; Mouse cerebral cortex tissue; Rat kidney tissue. ICC/IF: C6 and RAW 264.7 cells. IP: HeLa and C6 cell lysates.
<b>General notes</b>	<p>This product is a recombinant monoclonal antibody, which offers several advantages including:</p> <ul style="list-style-type: none"> <li>- High batch-to-batch consistency and reproducibility</li> <li>- Improved sensitivity and specificity</li> <li>- Long-term security of supply</li> <li>- Animal-free production</li> </ul> <p>For more information <a href="#">see here</a>.</p> <p>Our RabMAb<sup>®</sup> technology is a patented hybridoma-based technology for making rabbit monoclonal antibodies. For details on our patents, please refer to <a href="#">RabMAb<sup>®</sup> patents</a>.</p>

#### Properties

<b>Form</b>	Liquid
<b>Storage instructions</b>	Shipped at 4°C. Store at +4°C short term (1-2 weeks). Upon delivery aliquot. Store at -20°C long term. Avoid freeze / thaw cycle.
<b>Storage buffer</b>	<p>pH: 7.2</p> <p>Preservative: 0.01% Sodium azide</p> <p>Constituents: 59% PBS, 40% Glycerol (glycerin, glycerine), 0.05% BSA</p>
<b>Purity</b>	Protein A purified
<b>Clonality</b>	Monoclonal

Clone number	EPR18441
Isotype	IgG

## Applications

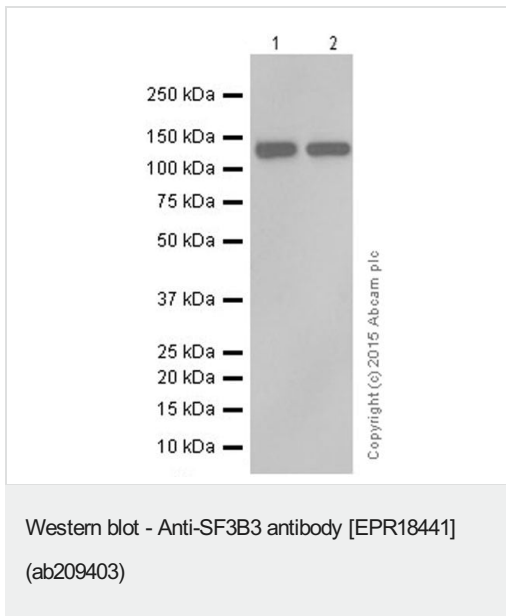
**The Abpromise guarantee** Our **Abpromise guarantee** covers the use of ab209403 in the following tested applications. The application notes include recommended starting dilutions; optimal dilutions/concentrations should be determined by the end user.

Application	Abreviews	Notes
WB		1/2000. Detects a band of approximately 136 kDa (predicted molecular weight: 136 kDa).
IHC-P		1/250. Perform heat mediated antigen retrieval with Tris/EDTA buffer pH 9.0 before commencing with IHC staining protocol.
ICC/IF		1/500.
IP		1/60.

## Target

<b>Function</b>	Subunit of the splicing factor SF3B required for 'A' complex assembly formed by the stable binding of U2 snRNP to the branchpoint sequence (BPS) in pre-mRNA. Sequence independent binding of SF3A/SF3B complex upstream of the branch site is essential, it may anchor U2 snRNP to the pre-mRNA. May also be involved in the assembly of the 'E' complex. Belongs also to the minor U12-dependent spliceosome, which is involved in the splicing of rare class of nuclear pre-mRNA intron.
<b>Sequence similarities</b>	Belongs to the RSE1 family.
<b>Cellular localization</b>	Nucleus.

## Images



**All lanes :** Anti-SF3B3 antibody [EPR18441] (ab209403) at 1/5000 dilution

**Lane 1 :** HeLa (Human epithelial cell line from cervix adenocarcinoma) whole cell lysate

**Lane 2 :** Jurkat (Human T cell leukemia cell line from peripheral blood) whole cell lysate

Lysates/proteins at 20 µg per lane.

#### Secondary

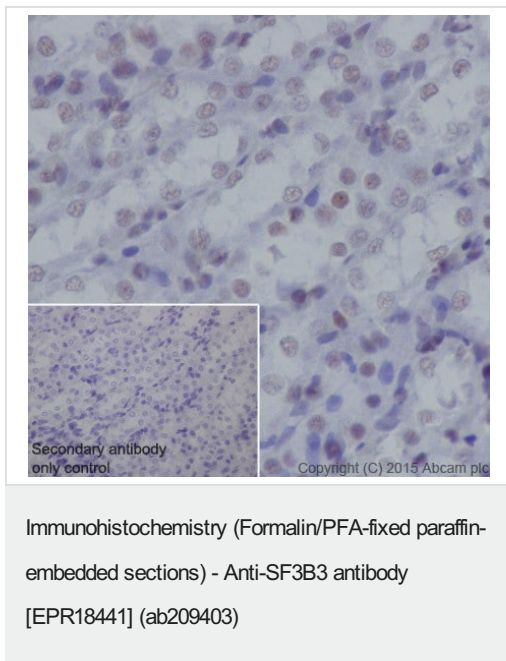
**All lanes :** Goat Anti-Rabbit IgG H&L (HRP) ([ab97051](#)) at 1/100000 dilution

**Predicted band size:** 136 kDa

**Observed band size:** 136 kDa

**Exposure time:** 8 seconds

Blocking/Dilution buffer: 5% NFDm/TBST.



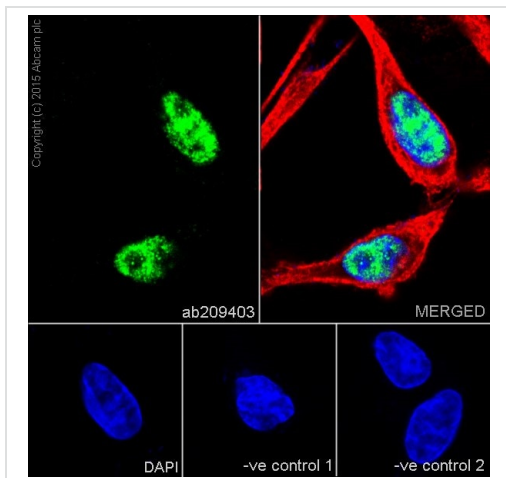
Immunohistochemical analysis of paraffin-embedded Rat kidney tissue labeling SF3B3 with ab209403 at 1/250 dilution, followed by Goat Anti-Rabbit IgG H&L (HRP) ([ab97051](#)) at 1/500 dilution.

Nucleus staining on rat kidney is observed.

Counter stained with Hematoxylin.

Secondary antibody only control: Used PBS instead of primary antibody, secondary antibody is Goat Anti-Rabbit IgG H&L (HRP) ([ab97051](#)) at 1/500 dilution.

Perform heat mediated antigen retrieval with Tris/EDTA buffer pH 9.0 before commencing with IHC staining protocol.



Immunocytochemistry/ Immunofluorescence - Anti-SF3B3 antibody [EPR18441] (ab209403)

Immunofluorescent analysis of 4% paraformaldehyde-fixed, 0.1% Triton X-100 permeabilized C6 (Rat glial tumor cell line) cells labeling SF3B3 with ab209403 at 1/500 dilution, followed by Goat Anti-Rabbit IgG (Alexa Fluor® 488) (**ab150077**) secondary antibody at 1/1000 dilution (green).

Confocal image showing nuclear staining on C6 cell line.

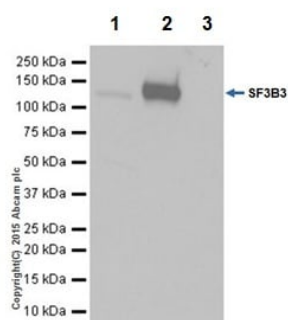
The nuclear counterstain is DAPI (blue).

Tubulin is detected with Anti-alpha Tubulin antibody - Loading Control (**ab7291**) at 1/1000 dilution and Goat Anti-Mouse IgG (AlexaFluor®594) preadsorbed (**ab150120**) at 1/1000 dilution (red).

The negative controls are as follows:-

-ve control 1: ab209403 at 1/500 dilution followed by **ab150120** at 1/1000 dilution.

-ve control 2: **ab7291** at 1/1000 dilution followed by **ab150077** at 1/1000 dilution.



Immunoprecipitation - Anti-SF3B3 antibody [EPR18441] (ab209403)

SF3B3 was immunoprecipitated from 1mg / 300µl of HeLa (Human epithelial cell line from cervix adenocarcinoma) whole cell lysate with ab209403 at 1/60 dilution (5µg/ 1mg of lysate).

Western blot was performed from the immunoprecipitate using ab209403 at 1/1000 dilution.

VeriBlot for IP Detection Reagent (HRP) (**ab131366**), was used for detection at 1/10000 dilution.

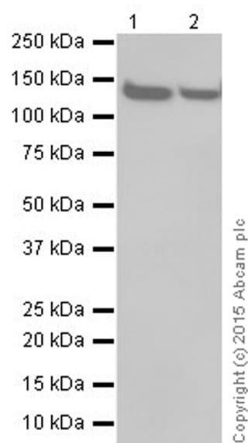
Lane 1: HeLa whole cell lysate, 10ug (Input).

Lane 2: ab209403 IP in HeLa whole cell lysate.

Lane 3: Rabbit IgG, monoclonal - Isotype Control (**ab172730**) instead of ab209403 in HeLa whole cell lysate.

Blocking and dilution buffer and concentration: 5% NFDM/TBST.

Exposure time: 1 second.



Western blot - Anti-SF3B3 antibody [EPR18441]  
(ab209403)

**All lanes** : Anti-SF3B3 antibody [EPR18441] (ab209403) at 1/2000 dilution

**Lane 1** : Human fetal liver lysate

**Lane 2** : Human fetal heart lysate

Lysates/proteins at 10 µg per lane.

### Secondary

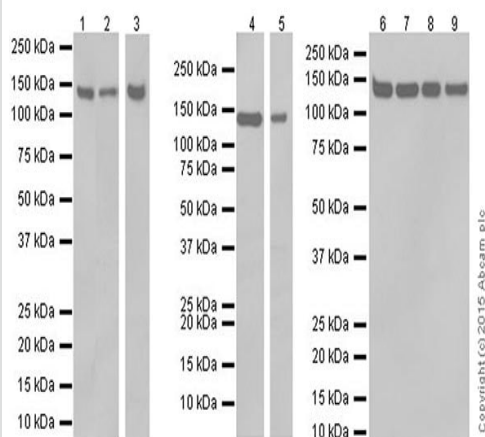
**All lanes** : Goat Anti-Rabbit IgG Peroxidase Conjugate, specific to the non-reduced form of IgG at 1/10000 dilution

**Predicted band size:** 136 kDa

**Observed band size:** 136 kDa

**Exposure time:** 3 minutes

Blocking/Dilution buffer: 5% NFDM/TBST.



Western blot - Anti-SF3B3 antibody [EPR18441]  
(ab209403)

**All lanes** : Anti-SF3B3 antibody [EPR18441] (ab209403) at 1/2000 dilution

**Lane 1** : Mouse brain lysate

**Lane 2** : Mouse kidney lysate

**Lane 3** : Mouse spleen lysate

**Lane 4** : Rat kidney lysate

**Lane 5** : Rat spleen lysate

**Lane 6** : C6 (Rat glial tumor cell line) whole cell lysate  
**Lane 7** : RAW 264.7 (Mouse macrophage cell line transformed with Abelson murine leukemia virus) whole cell lysate

**Lane 8** : PC-12 (Rat adrenal gland pheochromocytoma cell line) whole cell lysate

**Lane 9** : NIH/3T3 (Mouse embryonic fibroblast cell line) whole cell lysate

Lysates/proteins at 10 µg per lane.

### Secondary

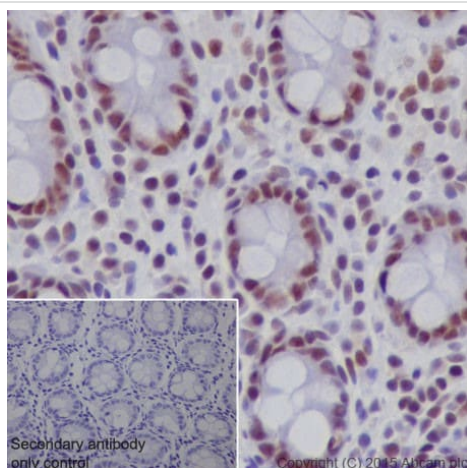
**All lanes :** Goat Anti-Rabbit IgG H&L (HRP) ([ab97051](#)) at 1/100000 dilution

**Predicted band size:** 136 kDa

**Observed band size:** 136 kDa

Blocking/Dilution buffer: 5% NFDM/TBST.

**Exposure time :** Lane 1/2/4: 3 minutes; Lane 3/5: 30 seconds;  
Lane 6/7/8/9: 8 seconds.



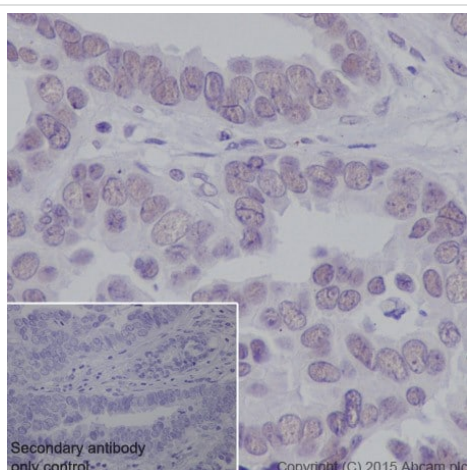
Immunohistochemistry (Formalin/PFA-fixed paraffin-embedded sections) - Anti-SF3B3 antibody [EPR18441] (ab209403)

Immunohistochemical analysis of paraffin-embedded Human colon tissue labeling SF3B3 with ab209403 at 1/250 dilution, followed by Goat Anti-Rabbit IgG H&L (HRP) ([ab97051](#)) at 1/500 dilution.

Nucleus staining on Human colon is observed.

Counter stained with Hematoxylin.

Secondary antibody only control: Used PBS instead of primary antibody, secondary antibody is Goat Anti-Rabbit IgG H&L (HRP) ([ab97051](#)) at 1/500 dilution.



Immunohistochemistry (Formalin/PFA-fixed paraffin-embedded sections) - Anti-SF3B3 antibody [EPR18441] (ab209403)

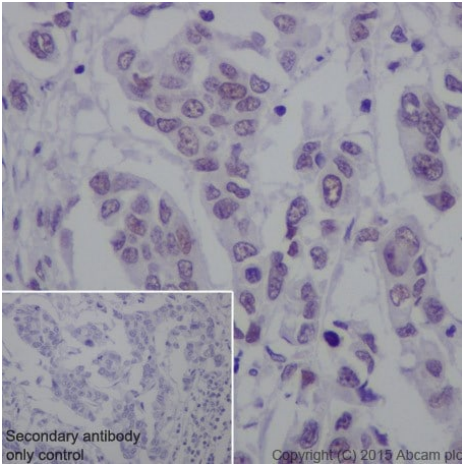
Immunohistochemical analysis of paraffin-embedded Human breast cancer (ER+) tissue labeling SF3B3 with ab209403 at 1/250 dilution, followed by Goat Anti-Rabbit IgG H&L (HRP) ([ab97051](#)) at 1/500 dilution.

Nucleus staining on ER+ breast cancer is observed.

Counter stained with Hematoxylin.

Secondary antibody only control: Used PBS instead of primary antibody, secondary antibody is Goat Anti-Rabbit IgG H&L (HRP) ([ab97051](#)) at 1/500 dilution.





Immunohistochemistry (Formalin/PFA-fixed paraffin-embedded sections) - Anti-SF3B3 antibody [EPR18441] (ab209403)

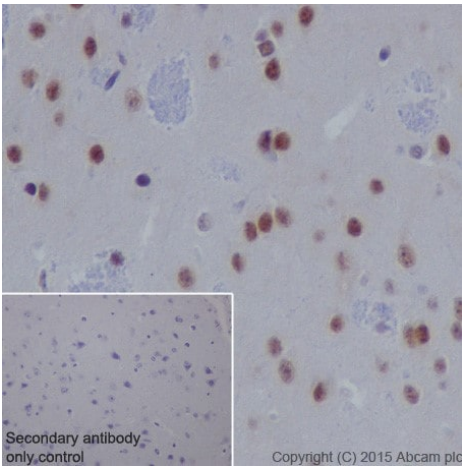
Immunohistochemical analysis of paraffin-embedded Human breast cancer (ER-) tissue labeling SF3B3 with ab209403 at 1/250 dilution, followed by Goat Anti-Rabbit IgG H&L (HRP) ([ab97051](#)) at 1/500 dilution.

Weak nucleus staining on ER- breast cancer is observed.

Counter stained with Hematoxylin.

Secondary antibody only control: Used PBS instead of primary antibody, secondary antibody is Goat Anti-Rabbit IgG H&L (HRP) ([ab97051](#)) at 1/500 dilution.

Perform heat mediated antigen retrieval with Tris/EDTA buffer pH 9.0 before commencing with IHC staining protocol.



Immunohistochemistry (Formalin/PFA-fixed paraffin-embedded sections) - Anti-SF3B3 antibody [EPR18441] (ab209403)

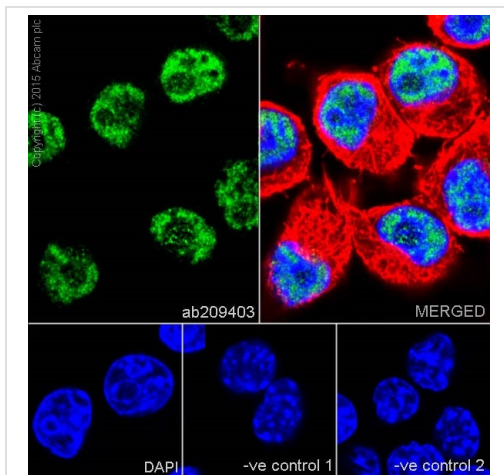
Immunohistochemical analysis of paraffin-embedded mouse cerebral cortex tissue labeling SF3B3 with ab209403 at 1/250 dilution, followed by Goat Anti-Rabbit IgG H&L (HRP) ([ab97051](#)) at 1/500 dilution.

Nucleus staining on mouse cerebral cortex is observed.

Counter stained with Hematoxylin.

Secondary antibody only control: Used PBS instead of primary antibody, secondary antibody is Goat Anti-Rabbit IgG H&L (HRP) ([ab97051](#)) at 1/500 dilution.

Perform heat mediated antigen retrieval with Tris/EDTA buffer pH 9.0 before commencing with IHC staining protocol.



Immunocytochemistry/ Immunofluorescence - Anti-SF3B3 antibody [EPR18441] (ab209403)

Immunofluorescent analysis of 4% paraformaldehyde-fixed, 0.1% Triton X-100 permeabilized RAW 264.7 (Mouse macrophage cell line transformed with Abelson murine leukemia virus) cells labeling SF3B3 with ab209403 at 1/500 dilution, followed by Goat Anti-Rabbit IgG (Alexa Fluor® 488) ([ab150077](#)) secondary antibody at 1/1000 dilution (green).

Confocal image showing nuclear staining on RAW 264.7 cell line.

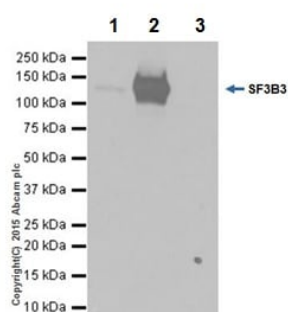
The nuclear counterstain is DAPI (blue).

Tubulin is detected with Anti-alpha Tubulin antibody- Loading Control ([ab7291](#)) at 1/1000 dilution and Goat Anti-Mouse IgG(AlexaFluor®594) preadsorbed ([ab150120](#)) at 1/1000 dilution (red).

The negative controls are as follows:-

-ve control 1: ab209403 at 1/500 dilution followed by [ab150120](#) at 1/1000 dilution.

-ve control 2: [ab7291](#) at 1/1000 dilution followed by [ab150077](#) at 1/1000 dilution.



Immunoprecipitation - Anti-SF3B3 antibody [EPR18441] (ab209403)

SF3B3 was immunoprecipitated from 1mg / 300µl of C6 (Rat glial tumor cell line) whole cell lysate with ab209403 at 1/60 dilution (5µg / 1mg of lysate).

Western blot was performed from the immunoprecipitate using ab209403 at 1/1000 dilution.

VeriBlot for IP Detection Reagent (HRP) ([ab131366](#)), was used for detection at 1/10000 dilution.

Lane 1: C6 whole cell lysate, 10ug (Input).

Lane 2: ab209403 IP in C6 whole cell lysate.

Lane 3: Rabbit IgG, monoclonal - Isotype Control ([ab172730](#)) instead of ab209403 in HeLa whole cell lysate.

Blocking and dilution buffer and concentration: 5% NFDM/TBST.

Exposure time: 1 second.



### Why choose a recombinant antibody?



**Research with confidence**  
Consistent and reproducible results



**Long-term and scalable supply**  
Recombinant technology



**Success from the first experiment**  
Confirmed specificity



**Ethical standards compliant**  
Animal-free production

Anti-SF3B3 antibody [EPR18441] (ab209403)

**Please note:** All products are "FOR RESEARCH USE ONLY. NOT FOR USE IN DIAGNOSTIC PROCEDURES"

### Our Abpromise to you: Quality guaranteed and expert technical support

---

- Replacement or refund for products not performing as stated on the datasheet
- Valid for 12 months from date of delivery
- Response to your inquiry within 24 hours
- We provide support in Chinese, English, French, German, Japanese and Spanish
- Extensive multi-media technical resources to help you
- We investigate all quality concerns to ensure our products perform to the highest standards

If the product does not perform as described on this datasheet, we will offer a refund or replacement. For full details of the Abpromise, please visit <https://www.abcam.com/abpromise> or contact our technical team.

### Terms and conditions

---

- Guarantee only valid for products bought direct from Abcam or one of our authorized distributors