

## Product datasheet

### Anti-SFRS7/SRSF7 antibody ab72616

[2 Images](#)

#### Overview

---

<b>Product name</b>	Anti-SFRS7/SRSF7 antibody
<b>Description</b>	Mouse polyclonal to SFRS7/SRSF7
<b>Host species</b>	Mouse
<b>Tested applications</b>	<b>Suitable for:</b> WB, ICC/IF
<b>Species reactivity</b>	<b>Reacts with:</b> Human
<b>Immunogen</b>	Recombinant full length protein within Human SFRS7/SRSF7. The exact immunogen sequence used to generate this antibody is proprietary information. If additional detail on the immunogen is needed to determine the suitability of the antibody for your needs, please <b>contact</b> our Scientific Support team to discuss your requirements. (NP_001026854, 1 a.a. ~ 238 a.a)
<b>Positive control</b>	SFRS7/SRSF7 transfected lysate
<b>General notes</b>	<p>The Life Science industry has been in the grips of a reproducibility crisis for a number of years. Abcam is leading the way in addressing this with our range of recombinant monoclonal antibodies and knockout edited cell lines for gold-standard validation. Please check that this product meets your needs before purchasing.</p> <p>If you have any questions, special requirements or concerns, please send us an inquiry and/or contact our Support team ahead of purchase. Recommended alternatives for this product can be found below, along with publications, customer reviews and Q&amp;As</p>

#### Properties

---

<b>Form</b>	Liquid
<b>Storage instructions</b>	Shipped at 4°C. Upon delivery aliquot and store at -20°C or -80°C. Avoid repeated freeze / thaw cycles.
<b>Storage buffer</b>	pH: 7.40 Constituent: 100% PBS
<b>Purity</b>	Protein A purified
<b>Clonality</b>	Polyclonal
<b>Isotype</b>	IgG

#### Applications

---

## The Abpromise guarantee

Our **Abpromise guarantee** covers the use of ab72616 in the following tested applications.

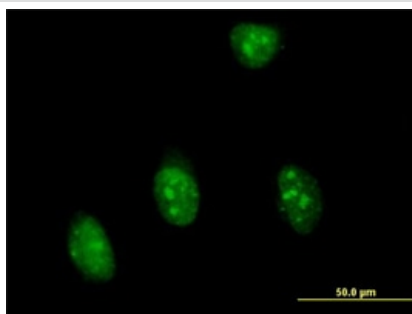
The application notes include recommended starting dilutions; optimal dilutions/concentrations should be determined by the end user.

Application	Abreviews	Notes
WB		1/500 - 1/1000. Detects a band of approximately 27 kDa (predicted molecular weight: 27 kDa).
ICC/IF		Use a concentration of 10 µg/ml.

## Target

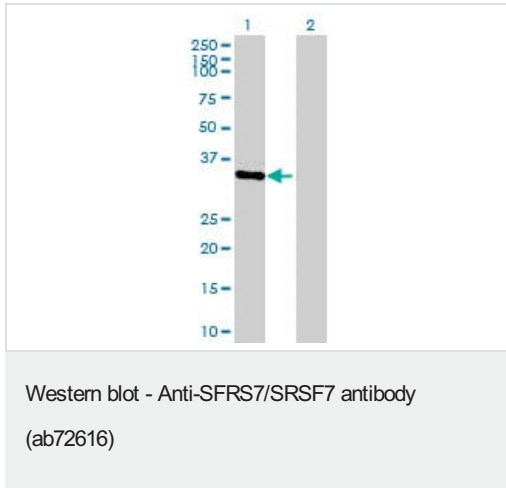
<b>Function</b>	Required for pre-mRNA splicing. Can also modulate alternative splicing in vitro. Represses the splicing of MAPT/Tau exon 10.
<b>Tissue specificity</b>	Brain, liver, kidney and lung.
<b>Sequence similarities</b>	Belongs to the splicing factor SR family. Contains 1 CCHC-type zinc finger. Contains 1 RRM (RNA recognition motif) domain.
<b>Post-translational modifications</b>	Extensively phosphorylated on serine residues in the RS domain.
<b>Cellular localization</b>	Nucleus.

## Images



Immunocytochemistry of HeLa cells staining SFRS7/SRSF7 using ab72616 at 10 µg/ml.

Immunocytochemistry/ Immunofluorescence - Anti-SFRS7/SRSF7 antibody (ab72616)



**All lanes** : Anti-SFRS7/SRSF7 antibody (ab72616) at 1/500 dilution

**Lane 1** : SFRS7/SRSF7 transfected 293T cell line

**Lane 2** : Non transfected 293T cell line

Lysates/proteins at 25 µg per lane.

#### Secondary

**All lanes** : Goat Anti-Mouse IgG (H&L)-HRP Conjugate at 1/2500 dilution

Developed using the ECL technique.

**Predicted band size:** 27 kDa

**Observed band size:** 30 kDa

**Please note:** All products are "FOR RESEARCH USE ONLY. NOT FOR USE IN DIAGNOSTIC PROCEDURES"

#### Our Abpromise to you: Quality guaranteed and expert technical support

- Replacement or refund for products not performing as stated on the datasheet
- Valid for 12 months from date of delivery
- Response to your inquiry within 24 hours
- We provide support in Chinese, English, French, German, Japanese and Spanish
- Extensive multi-media technical resources to help you
- We investigate all quality concerns to ensure our products perform to the highest standards

If the product does not perform as described on this datasheet, we will offer a refund or replacement. For full details of the Abpromise, please visit <https://www.abcam.com/abpromise> or contact our technical team.

#### Terms and conditions

- Guarantee only valid for products bought direct from Abcam or one of our authorized distributors