

Product datasheet

Anti-SFT antibody [EPR13000(B)] ab176561


KO VALIDATED

Recombinant

RabMAb

[4 References](#) [7 Images](#)

Overview

Product name	Anti-SFT antibody [EPR13000(B)]
Description	Rabbit monoclonal [EPR13000(B)] to SFT
Host species	Rabbit
Tested applications	Suitable for: Flow Cyt (Intra), WB, IHC-P, IP Unsuitable for: ICC/IF
Species reactivity	Reacts with: Mouse, Human Predicted to work with: Rat 
Immunogen	Synthetic peptide. This information is proprietary to Abcam and/or its suppliers.
Positive control	Jurkat and Raji cell lysates, Human skeletal muscle lysate, Human thyroid gland carcinoma and prostate tissues, Jurkat cells.
General notes	<p>This product is a recombinant monoclonal antibody, which offers several advantages including:</p> <ul style="list-style-type: none"> - High batch-to-batch consistency and reproducibility - Improved sensitivity and specificity - Long-term security of supply - Animal-free production <p>For more information see here.</p> <p>Our RabMAb[®] technology is a patented hybridoma-based technology for making rabbit monoclonal antibodies. For details on our patents, please refer to RabMAb[®] patents.</p>

Properties

Form	Liquid
Storage instructions	Shipped at 4°C. Store at +4°C short term (1-2 weeks). Upon delivery aliquot. Store at -20°C long term. Avoid freeze / thaw cycle.
Storage buffer	pH: 7.20 Preservative: 0.01% Sodium azide Constituents: 9% PBS, 40% Glycerol (glycerin, glycerine), 0.05% BSA, 50% Tissue culture supernatant
Purity	Protein A purified
Clonality	Monoclonal

Clone number	EPR13000(B)
Isotype	IgG

Applications

The Abpromise guarantee Our **Abpromise guarantee** covers the use of ab176561 in the following tested applications. The application notes include recommended starting dilutions; optimal dilutions/concentrations should be determined by the end user.

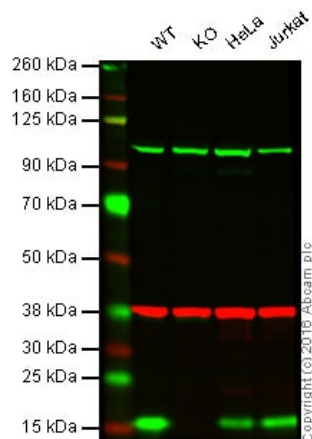
Application	Abreviews	Notes
Flow Cyt (Intra)		1/10 - 1/100. ab172730 - Rabbit monoclonal IgG, is suitable for use as an isotype control with this antibody.
WB		1/10000 - 1/50000. Predicted molecular weight: 17 kDa.
IHC-P		1/50 - 1/100. Perform heat mediated antigen retrieval with citrate buffer pH 6 before commencing with IHC staining protocol.
IP		1/10 - 1/100.

Application notes Is unsuitable for ICC/IF.

Target

Function	Accepts ubiquitin from the E1 complex and catalyzes its covalent attachment to other proteins. In vitro catalyzes 'Lys-48'-linked polyubiquitination. Mediates the selective degradation of short-lived and abnormal proteins. Functions in the E6/E6-AP-induced ubiquitination of p53/TP53. Mediates ubiquitination of PEX5 and auto-ubiquitination of CHIP, TRAF6 and TRIM63/MURF1. Ubiquitinates CHIP-associated HSP90AB1 in vitro. Lacks inherent specificity for any particular lysine residue of ubiquitin. Essential for viral activation of IRF3. Mediates polyubiquitination of CYP3A4.
Tissue specificity	Ubiquitous. Up-regulated in livers of iron-overloaded patients with hereditary hemochromatosis.
Pathway	Protein modification; protein ubiquitination.
Sequence similarities	Belongs to the ubiquitin-conjugating enzyme family.
Cellular localization	Cytoplasm.

Images



Western blot - Anti-SFT antibody [EPR13000(B)]
(ab176561)

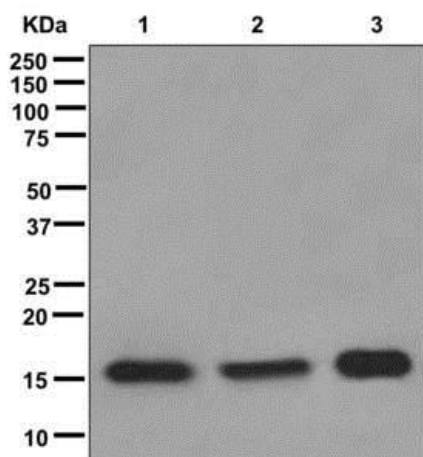
Lane 1: Wild-type HAP1 cell lysate (20 µg)

Lane 2: SFT knockout HAP1 cell lysate (20 µg)

Lane 3: HeLa cell lysate (20 µg)

Lane 4: Jurkat cell lysate (20 µg)

Lanes 1 - 4: Merged signal (red and green). Green - ab176561 observed at 18 kDa. Red - loading control, **ab181602**, observed at 37 kDa. ab176561 was shown to recognize SFT when SFT knockout samples were used, along with additional cross-reactive bands. Wild-type and SFT knockout samples were subjected to SDS-PAGE. ab176561 and **ab181602** (loading control to GAPDH) were diluted 1 µg/mL and 1/10 000 respectively and incubated overnight at 4°C. Blots were developed with Goat anti-Mouse IgG H&L (IRDye® 800CW) preadsorbed (**ab216772**) and Goat Anti-Rabbit IgG H&L (IRDye® 680RD) preadsorbed (**ab216777**) secondary antibodies at 1/10 000 dilution for 1 h at room temperature before imaging.



Western blot - Anti-SFT antibody [EPR13000(B)]
(ab176561)

All lanes : Anti-SFT antibody [EPR13000(B)] (ab176561) at 1/10000 dilution

Lane 1 : Jurkat cell lysate

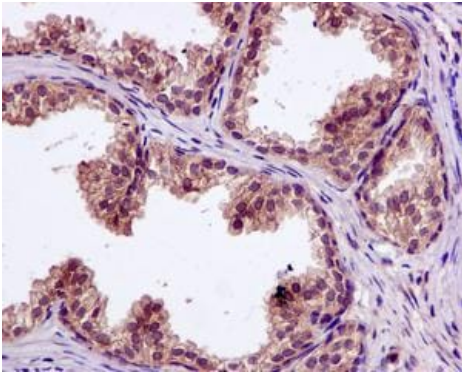
Lane 2 : Raji cell lysate

Lane 3 : Human skeletal muscle lysate

Lysates/proteins at 10 µg per lane.

Developed using the ECL technique.

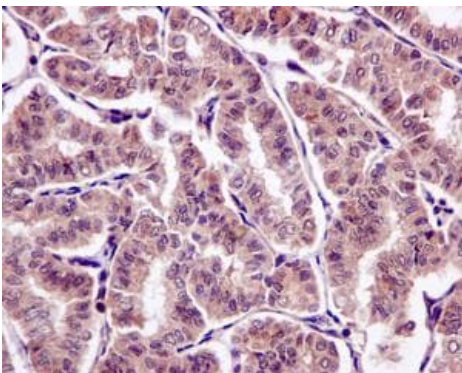
Predicted band size: 17 kDa



Immunohistochemistry (Formalin/PFA-fixed paraffin-embedded sections) - Anti-SFT antibody
[EPR13000(B)] (ab176561)

Immunohistochemical analysis of formalin-fixed, paraffin-embedded, Human prostate tissue labeling SFT with ab176561 at a 1/50 dilution.

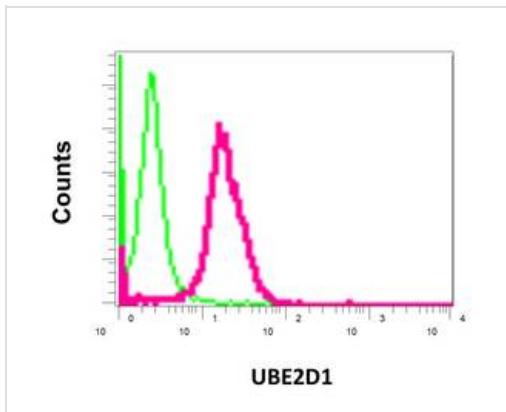
Perform heat mediated antigen retrieval with citrate buffer pH 6 before commencing with IHC staining protocol.



Immunohistochemistry (Formalin/PFA-fixed paraffin-embedded sections) - Anti-SFT antibody
[EPR13000(B)] (ab176561)

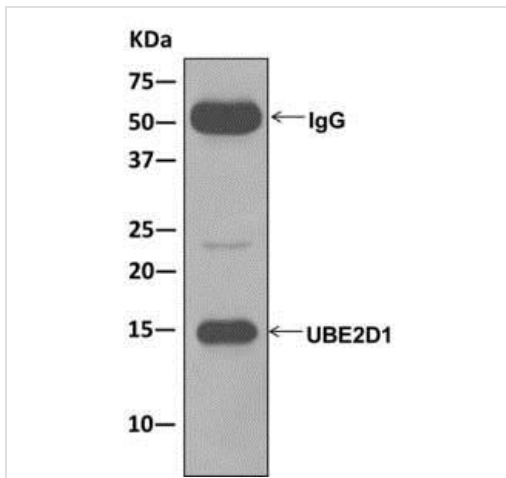
Immunohistochemical analysis of formalin-fixed, paraffin-embedded, Human thyroid gland carcinoma tissue labeling SFT with ab176561 at a 1/50 dilution.

Perform heat mediated antigen retrieval with citrate buffer pH 6 before commencing with IHC staining protocol.



Intracellular Flow Cytometry analysis of permeabilized Jurkat cells labeling SFT (red) with ab176561 at a 1/10 dilution, or negative control rabbit IgG (green)

Flow Cytometry (Intracellular) - Anti-SFT antibody
[EPR13000(B)] (ab176561)



Western blot analysis on immunoprecipitation pellet from Human skeletal muscle lysate labeling SFT with ab176561 at 1/10 dilution.

Immunoprecipitation - Anti-SFT antibody
[EPR13000(B)] (ab176561)

Why choose a
recombinant antibody?



Anti-SFT antibody [EPR13000(B)] (ab176561)

Please note: All products are "FOR RESEARCH USE ONLY. NOT FOR USE IN DIAGNOSTIC PROCEDURES"

Our Abpromise to you: Quality guaranteed and expert technical support

- Replacement or refund for products not performing as stated on the datasheet
- Valid for 12 months from date of delivery
- Response to your inquiry within 24 hours

- We provide support in Chinese, English, French, German, Japanese and Spanish
- Extensive multi-media technical resources to help you
- We investigate all quality concerns to ensure our products perform to the highest standards

If the product does not perform as described on this datasheet, we will offer a refund or replacement. For full details of the Abpromise, please visit <https://www.abcam.com/abpromise> or contact our technical team.

Terms and conditions

- Guarantee only valid for products bought direct from Abcam or one of our authorized distributors