

## Product datasheet

# Anti-SGLT1 antibody ab14686

★★★★☆ [10 Abreviews](#) [61 References](#) [1 Image](#)

### Overview

---

<b>Product name</b>	Anti-SGLT1 antibody
<b>Description</b>	Rabbit polyclonal to SGLT1
<b>Host species</b>	Rabbit
<b>Tested applications</b>	<b>Suitable for:</b> WB, ELISA, Dot blot, IP <b>Unsuitable for:</b> IHC-P
<b>Species reactivity</b>	<b>Reacts with:</b> Rat, Human
<b>Immunogen</b>	Synthetic peptide corresponding to Human SGLT1 aa 402-422. Synthetic peptide, corresponding to amino acids 402-422 of Human SGLT1 Database link: <a href="#">P13866</a> (Peptide available as <a href="#">ab190911</a> )
<b>Positive control</b>	WB: Rat enterocytes, rat heart, and human skeletal muscle tissues lysates.
<b>General notes</b>	<p>A blocking peptide for this product is available as <a href="#">ab190911</a>.</p> <p>The Life Science industry has been in the grips of a reproducibility crisis for a number of years. Abcam is leading the way in addressing this with our range of recombinant monoclonal antibodies and knockout edited cell lines for gold-standard validation. Please check that this product meets your needs before purchasing.</p> <p>If you have any questions, special requirements or concerns, please send us an inquiry and/or contact our Support team ahead of purchase. Recommended alternatives for this product can be found below, along with publications, customer reviews and Q&amp;As</p>

### Properties

---

<b>Form</b>	Liquid
<b>Storage instructions</b>	Shipped at 4°C. Store at +4°C short term (1-2 weeks). Upon delivery aliquot. Store at -20°C or -80°C. Avoid freeze / thaw cycle.
<b>Storage buffer</b>	Preservative: 0.02% Sodium azide Constituents: Tris glycine, 0.5% BSA, HEPES, 30% Glycerol
<b>Purity</b>	Immunogen affinity purified
<b>Purification notes</b>	Purified on antigen sepharose affinity column
<b>Clonality</b>	Polyclonal

Isotype

IgG

## Applications

### The Abpromise guarantee

Our **Abpromise guarantee** covers the use of ab14686 in the following tested applications.

The application notes include recommended starting dilutions; optimal dilutions/concentrations should be determined by the end user.

Application	Abreviews	Notes
WB	★★★★★ (6)	1/500 - 1/1000. Detects a band of approximately 74 kDa (predicted molecular weight: 73 kDa).
ELISA		Use at an assay dependent concentration.
Dot blot		Use at an assay dependent concentration.
IP		Use at an assay dependent concentration.

### Application notes

Is unsuitable for IHC-P.

## Target

### Function

Actively transports glucose into cells by Na(+) cotransport with a Na(+) to glucose coupling ratio of 2:1. Efficient substrate transport in mammalian kidney is provided by the concerted action of a low affinity high capacity and a high affinity low capacity Na(+)/glucose cotransporter arranged in series along kidney proximal tubules.

### Tissue specificity

Expressed mainly in intestine and kidney.

### Involvement in disease

Congenital glucose/galactose malabsorption

### Sequence similarities

Belongs to the sodium:solute symporter (SSF) (TC 2.A.21) family.

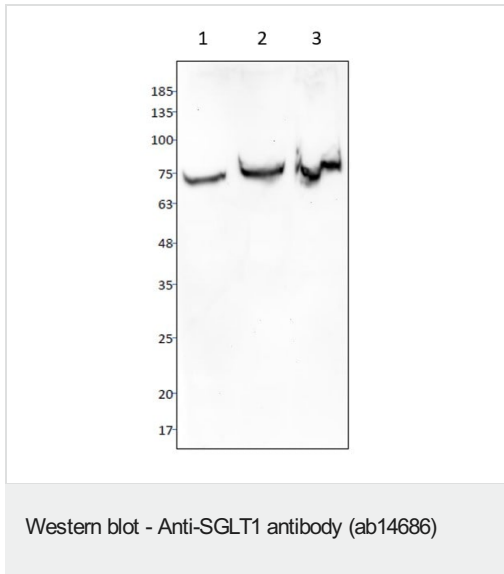
### Post-translational modifications

N-glycosylation is not necessary for the cotransporter function.

### Cellular localization

Membrane.

## Images



**All lanes :** Anti-SGLT1 antibody (ab14686) at 1/500 dilution

**Lane 1 :** Rat enterocytes

**Lane 2 :** Rat heart tissue

**Lane 3 :** Human skeletal muscle tissue

**Predicted band size:** 73 kDa

Tissue extracts were made in Solobuffer with protease inhibitors.

The samples were solubilized in SDS-PAGE sample buffer and reduced with 2.5% BME.

Total 40-50ug protein was applied per lane on 10% SDS PAGE gels.

The proteins were transferred to nitrocellulose F and blocked with 5% milk and blotted with 1:500 diluted ab14686.

The image was obtained with high sensitivity ECL assay and Image was captured with a CCD cooled camera for 30 sec.

**Please note:** All products are "FOR RESEARCH USE ONLY. NOT FOR USE IN DIAGNOSTIC PROCEDURES"

### Our Abpromise to you: Quality guaranteed and expert technical support

- Replacement or refund for products not performing as stated on the datasheet
- Valid for 12 months from date of delivery
- Response to your inquiry within 24 hours
- We provide support in Chinese, English, French, German, Japanese and Spanish
- Extensive multi-media technical resources to help you
- We investigate all quality concerns to ensure our products perform to the highest standards

If the product does not perform as described on this datasheet, we will offer a refund or replacement. For full details of the Abpromise, please visit <https://www.abcam.com/abpromise> or contact our technical team.

## Terms and conditions

---

- Guarantee only valid for products bought direct from Abcam or one of our authorized distributors