

Anti-SGLT2 antibody ab37296

★★★★☆ [12 Abreviews](#) [34 References](#) [1 Image](#)

Overview

Product name	Anti-SGLT2 antibody
Description	Rabbit polyclonal to SGLT2
Host species	Rabbit
Specificity	The antibody detects 74 kDa SGLT-2 from human, mouse, and rat origins. Reactivity to other species has not been determined. A ~55 kDa and a ~45 kDa band can also be detected, representing the SGLT-2 cleavage fragments.
Tested applications	Suitable for: WB
Species reactivity	Reacts with: Mouse, Rat, Human
Immunogen	Synthetic peptide corresponding to Mouse SGLT2 (N terminal). Database link: Q923I7
Positive control	WB: Jurkat, NIH3T3, PC12
General notes	<p>This product is manufactured by BioVision, an Abcam company and was previously called 3690 SGLT-2 Antibody. 3690-100 is the same size as the 100 µg size of ab37296.</p> <p>The Life Science industry has been in the grips of a reproducibility crisis for a number of years. Abcam is leading the way in addressing this with our range of recombinant monoclonal antibodies and knockout edited cell lines for gold-standard validation. Please check that this product meets your needs before purchasing.</p> <p>If you have any questions, special requirements or concerns, please send us an inquiry and/or contact our Support team ahead of purchase. Recommended alternatives for this product can be found below, along with publications, customer reviews and Q&As</p>

Properties

Form	Liquid
Storage instructions	Shipped at 4°C. Upon delivery aliquot and store at -20°C or -80°C. Avoid repeated freeze / thaw cycles.
Storage buffer	Preservative: 0.02% Thimerosal (merthiolate) Constituents: 1% BSA, 50% Glycerol (glycerin, glycerine), PBS
Purity	Protein A purified
Clonality	Polyclonal

IsotypeIgG

Applications

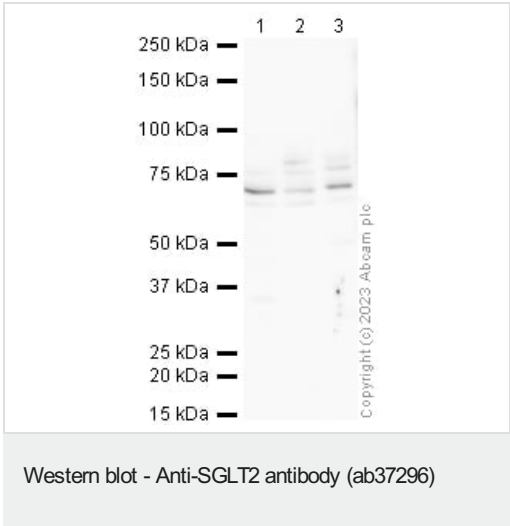
The Abpromise guarantee Our **Abpromise guarantee** covers the use of ab37296 in the following tested applications. The application notes include recommended starting dilutions; optimal dilutions/concentrations should be determined by the end user.

Application	Abreviews	Notes
WB	★★★★★ (8)	Use a concentration of 1 µg/ml. Predicted molecular weight: 73 kDa.

Target

Function	Sodium-dependent glucose transporter. Has a Na(+) to glucose coupling ratio of 1:1. Efficient substrate transport in mammalian kidney is provided by the concerted action of a low affinity high capacity and a high affinity low capacity Na(+)/glucose cotransporter arranged in series along kidney proximal tubules.
Involvement in disease	Defects in SLC5A2 are the cause of renal glucosuria (GLYS1) [MIM:233100]. GLYS1 is an autosomal recessive disorder characterized by a normal fasting serum glucose concentration and persistent isolated glucosuria, with a normal glucose tolerance test.
Sequence similarities	Belongs to the sodium:solute symporter (SSF) (TC 2.A.21) family.
Cellular localization	Membrane.

Images



All lanes : Anti-SGLT2 antibody (ab37296) at 1 µg/ml

Lane 1 : Jurkat
Lane 2 : NIH3T3
Lane 3 : PC12

Lysates/proteins at 20 µg per lane.

Secondary
All lanes : Goat Polyclonal to Rabbit IgG - H&L - Pre-Adsorbed (HRP) at 1/50000 dilution

Predicted band size: 73 kDa

Blocking buffer: 3% milk

Please note: All products are "FOR RESEARCH USE ONLY. NOT FOR USE IN DIAGNOSTIC PROCEDURES"

Our Abpromise to you: Quality guaranteed and expert technical support

- Replacement or refund for products not performing as stated on the datasheet
- Valid for 12 months from date of delivery
- Response to your inquiry within 24 hours

- We provide support in Chinese, English, French, German, Japanese and Spanish
- Extensive multi-media technical resources to help you
- We investigate all quality concerns to ensure our products perform to the highest standards

If the product does not perform as described on this datasheet, we will offer a refund or replacement. For full details of the Abpromise, please visit <https://www.abcam.com/abpromise> or contact our technical team.

Terms and conditions

- Guarantee only valid for products bought direct from Abcam or one of our authorized distributors