

Product datasheet

Anti-SH2D1A/SAP antibody [1D12] - BSA and Azide free ab255862

Recombinant

[2 Images](#)

Overview

Product name	Anti-SH2D1A/SAP antibody [1D12] - BSA and Azide free
Description	Rat monoclonal [1D12] to SH2D1A/SAP - BSA and Azide free
Host species	Rat
Tested applications	Suitable for: WB Unsuitable for: Flow Cyt
Species reactivity	Reacts with: Human
Immunogen	Recombinant full length protein. This information is considered to be commercially sensitive.
Positive control	WB: MOLT-4, Jurkat and HDLM-2 cell lysates.
General notes	<p>ab255862 is the carrier-free version of ab255862.</p> <p>This antibody clone is manufactured by Abcam. If you require a custom buffer formulation or conjugation for your experiments, please contact orders@abcam.com.</p> <p>Our carrier-free antibodies are typically supplied in a PBS-only formulation, purified and free of BSA, sodium azide and glycerol. The carrier-free buffer and high concentration allow for increased conjugation efficiency.</p> <p>This conjugation-ready format is designed for use with fluorochromes, metal isotopes, oligonucleotides, and enzymes, which makes them ideal for antibody labelling, functional and cell-based assays, flow-based assays (e.g. mass cytometry) and Multiplex Imaging applications.</p> <p>Use our conjugation kits for antibody conjugates that are ready-to-use in as little as 20 minutes with <1 minute hands-on-time and 100% antibody recovery: available for fluorescent dyes, HRP, biotin and gold.</p> <p>This product is compatible with the Maxpar[®] Antibody Labeling Kit from Fluidigm, without the need for antibody preparation. Maxpar[®] is a trademark of Fluidigm Canada Inc.</p> <p>This product is a recombinant monoclonal antibody, which offers several advantages including:</p> <ul style="list-style-type: none">- High batch-to-batch consistency and reproducibility- Improved sensitivity and specificity- Long-term security of supply- Animal-free production <p>For more information see here.</p>

Properties

Form	Liquid
Storage instructions	Shipped at 4°C. Store at +4°C. Do Not Freeze.
Storage buffer	pH: 7.2 Constituent: PBS
Carrier free	Yes
Purity	Protein A purified
Clonality	Monoclonal
Clone number	1D12
Isotype	IgG2a
Light chain type	kappa

Applications

The Abpromise guarantee Our **Abpromise guarantee** covers the use of ab255862 in the following tested applications. The application notes include recommended starting dilutions; optimal dilutions/concentrations should be determined by the end user.

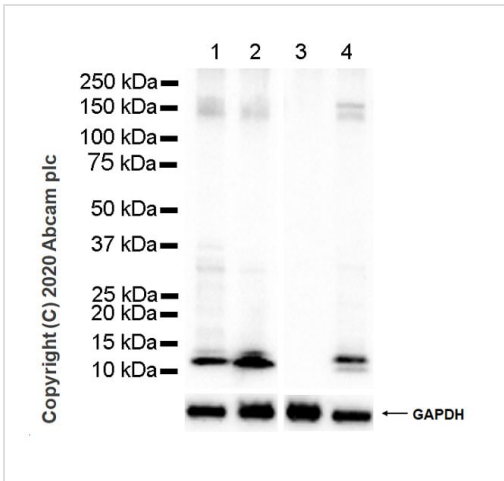
Application	Abreviews	Notes
WB		1/1000. Predicted molecular weight: 14 kDa.

Application notes Is unsuitable for Flow Cyt.

Target

Function	Inhibitor of the SLAM self-association. Acts by blocking recruitment of the SH2-domain-containing signal-transduction molecule SHP-2 to a docking site in the SLAM cytoplasmic region. Mediates interaction between FYN and SLAMF1. May also regulate the activity of the neurotrophin receptors NTRK1, NTRK2 and NTRK3.
Tissue specificity	Expressed at a high level in thymus and lung, with a lower level of expression in spleen and liver. Expressed in peripheral blood leukocytes, including T lymphocytes. Tends to be expressed at lower levels in peripheral blood leukocytes in patients with rheumatoid arthritis.
Involvement in disease	Defects in SH2D1A are a cause of lymphoproliferative syndrome X-linked type 1 (XLP1) [MIM:308240]; also known as X-linked lymphoproliferative disease (XLPD) or Duncan disease. XLP is a rare immunodeficiency characterized by extreme susceptibility to infection with Epstein-Barr virus (EBV). Symptoms include severe or fatal mononucleosis, acquired hypogammaglobulinemia, pancytopenia and malignant lymphoma.
Sequence similarities	Contains 1 SH2 domain.
Cellular localization	Cytoplasm.

Images



Western blot - Anti-SH2D1A/SAP antibody [1D12] - BSA and Azide free (ab255862)

All lanes : Anti-SH2D1A/SAP antibody [1D12] ([ab252866](#)) at 1/1000 dilution

Lane 1 : MOLT-4 (human lymphoblastic leukemia T lymphoblast), whole cell lysate

Lane 2 : Jurkat (human T cell leukemia T lymphocyte), whole cell lysate

Lane 3 : Raji (human Burkitt's lymphoma B lymphocyte), whole cell lysate

Lane 4 : HDLM-2 (human Hodgkin lymphoma), whole cell lysate

Lysates/proteins at 20 µg per lane.

Secondary

All lanes : Goat Anti-Rat IgG H&L (HRP) ([ab205720](#)) at 1/5000 dilution

Predicted band size: 14 kDa

Observed band size: 14 kDa





Blocking and diluting buffer and concentration: 5% NFDm/TBST

Negative control: Raji (PMID:11313386; PMID:11054674).

Exposure time: lane 1, 2:10 seconds lane 3, 4: 37 seconds

This data was developed using the same antibody clone in a different buffer formulation containing PBS, BSA, glycerol, and sodium azide ([ab252866](#)).

Why choose a recombinant antibody?

 <p>Research with confidence Consistent and reproducible results</p>	 <p>Long-term and scalable supply Recombinant technology</p>
 <p>Success from the first experiment Confirmed specificity</p>	 <p>Ethical standards compliant Animal-free production</p>

Anti-SH2D1A/SAP antibody [1D12] - BSA and Azide free (ab255862)

Please note: All products are "FOR RESEARCH USE ONLY. NOT FOR USE IN DIAGNOSTIC PROCEDURES"

Our Abpromise to you: Quality guaranteed and expert technical support

- Replacement or refund for products not performing as stated on the datasheet
- Valid for 12 months from date of delivery
- Response to your inquiry within 24 hours

- We provide support in Chinese, English, French, German, Japanese and Spanish
- Extensive multi-media technical resources to help you
- We investigate all quality concerns to ensure our products perform to the highest standards

If the product does not perform as described on this datasheet, we will offer a refund or replacement. For full details of the Abpromise, please visit <https://www.abcam.com/abpromise> or contact our technical team.

Terms and conditions

- Guarantee only valid for products bought direct from Abcam or one of our authorized distributors